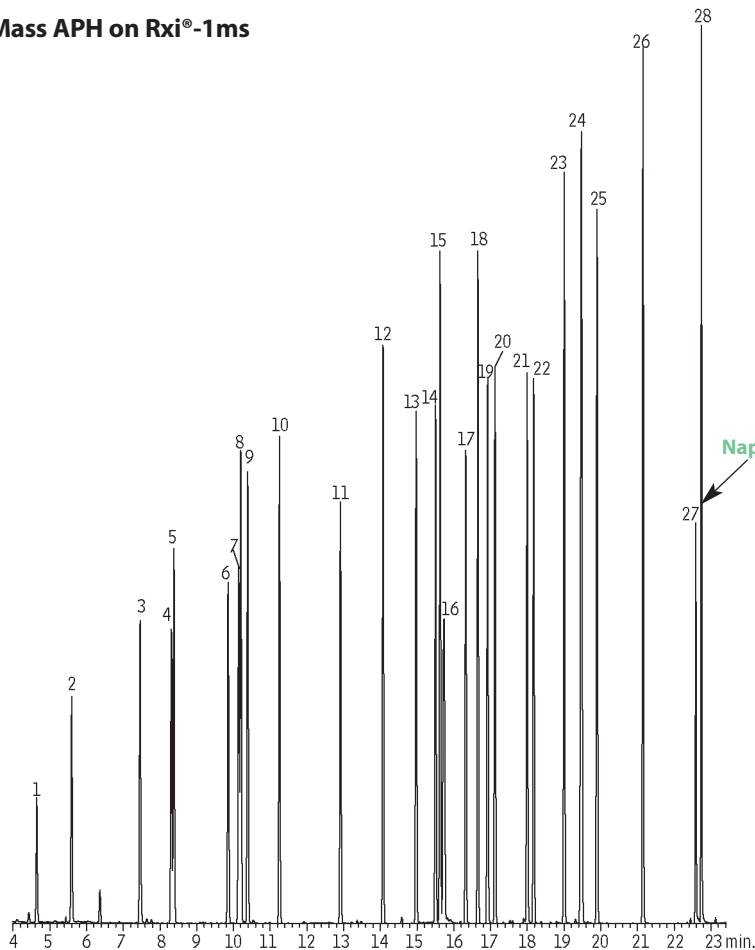


# Mass APH on Rxi®-1ms



GC\_AR1145

## Peaks

- |                                    |   |
|------------------------------------|---|
| 1. 1,3-Butadiene                   | 15. 2,3-Dimethylheptane                           |
| 2. <i>iso</i> -Pentane             | 16. <i>m/p</i> -Xylene                            |
| 3. Methyl <i>tert</i> -butyl ether | 17. <i>o</i> -Xylene                              |
| 4. Bromochloromethane              | 18. <i>n</i> -Nonane                              |
| 5. <i>n</i> -Hexane                | 19. 4-Bromofluorobenzene                          |
| 6. Benzene                         | 20. Isopropylbenzene                              |
| 7. Cyclohexane                     | 21. 1-Ethyl-3-methylbenzene                       |
| 8. 1,4-Difluorobenzene             | 22. 1,3,5-Trimethylbenzene                        |
| 9. 2,3-Dimethylpentane             | 23. <i>n</i> -Decane                              |
| 10. <i>n</i> -Heptane              | 24. 1,2,3-Trimethylbenzene/<br>p-Isopropyltoluene |
| 11. Toluene                        | 25. Butylcyclohexane                              |
| 12. <i>n</i> -Octane               | 26. <i>n</i> -Undecane                            |
| 13. Chlorobenzene-d5               | 27. Naphthalene                                   |
| 14. Ethylbenzene                   | 28. <i>n</i> -Dodecane                            |

Naphthalene

## Column Injection Oven

Rxi®-1ms, 60 m, 0.32 mm ID, 1.00  $\mu$ m (cat.# 13357)  
splitless

Oven Temp: 35 °C (hold 5 min.) to 220 °C at 7 °C/min. (hold 2 min.)  
**Carrier Gas** He, constant flow  
 Flow Rate: 1.2 mL/min.  
**Detector** MS  
 Mode: Scan  
 Transfer Line Temp.: 240 °C  
 Analyzer Type: Quadrupole  
 Source Temp.: 230 °C  
 Quad Temp.: 150 °C  
 Solvent Delay Time: 4.0 min.  
 Ionization Mode: EI  
 Scan Range: 35-250 amu  
**Preconcentrator** Entech 7100  
**Instrument** HP6890 GC & 5973 MSD  
**Acknowledgement** Courtesy of Mass DEP, Northeast Region