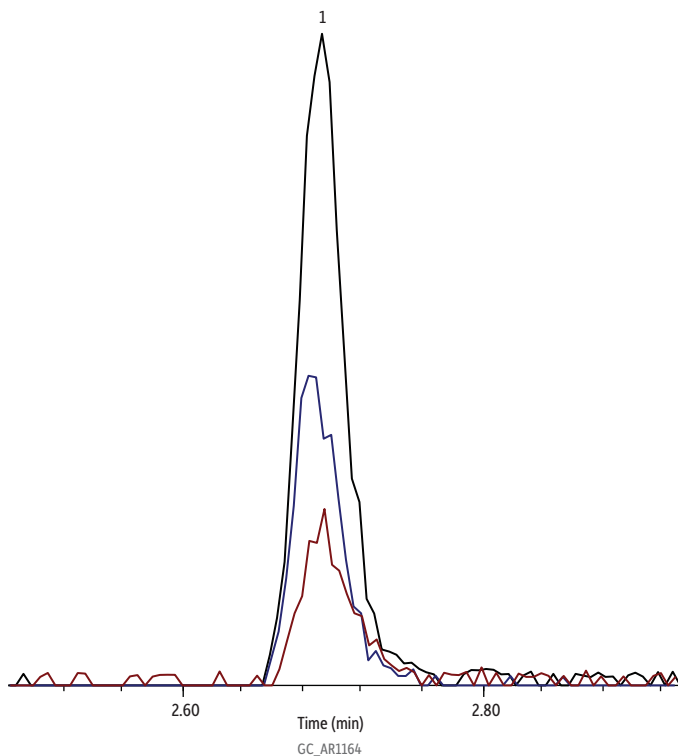


Ethanol on Rtx®-VMS



Peaks	t _R (min)	Ion 1	Ion 2	Ion 3
1. Ethanol	2.689	45.0	46.0	43.0

Column Rtx®-VMS, 30 m, 0.25 mm ID, 1.40 µm (cat.# 19915)
Sample 75 Comp TO15 + NJ mix (cat.# 34396)
 TO-14A internal standard/tuning mix (cat.# 34408)
Diluent: Nitrogen
Conc.: 10.0 ppbv 250 mL injection
Injection Direct
Oven
Oven Temp.: 32.0 °C (hold 5 min) to 150 °C at 8 °C/min to 230 °C at 33 °C/min
Carrier Gas He, constant flow
Flow Rate: 2.0 mL/min
Linear Velocity: 51 cm/sec @ 32 °C
Detector MS
Mode: Scan
Scan Program:

Group	Start Time (min)	Scan Range (amu)	Scan Rate (scans/sec)
1	0	35-250	3.32

Transfer Line Temp.: 230 °C
Analyzer Type: Quadrupole
Source Type: Extractor
Extractor Lens: 6 mm ID
Source Temp.: 230 °C
Quad Temp.: 150 °C
Electron Energy: 70 eV
Tune Type: BFB
Ionization Mode: EI
Preconcentrator Markes CIA Advantage
Instrument Agilent 7890B GC & 5977A MSD
Acknowledgement Markes International