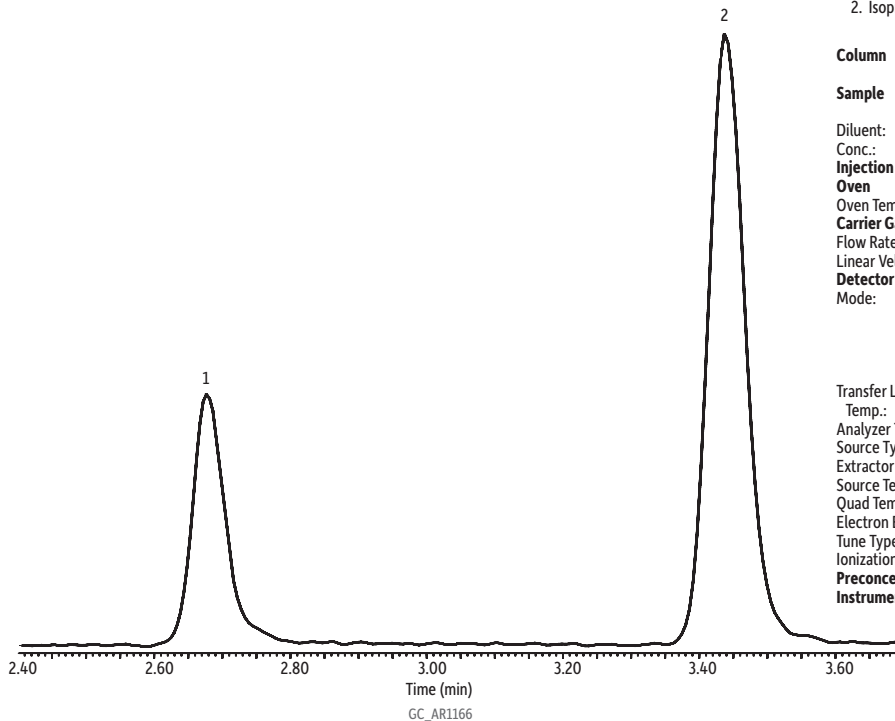


# Ethanol and Isopropyl Alcohol on Rtx-VMS (30 m, 2.0 mL/min)



Peaks	Retention Time (min)
1. Ethanol	2.68
2. Isopropyl alcohol	3.45

**Column** Rtx-VMS, 30 m, 0.25 mm ID, 1.40  $\mu$ m (cat.# 19915)  
with MXT low-dead-volume connector kit (cat.# 20536)

**Sample** TO-14A internal standard/tuning mix (cat.# 34408)  
75 comp TO15 + NJ mix (cat.# 34396)

**Diluent:** Nitrogen  
**Conc.:** 10.0 ppbv 250 mL injection  
**Injection** on-column

**Oven**  
**Oven Temp.:** 32 °C (hold 5 min) to 150 °C at 8 °C/min to 230 °C at 33 °C/min  
**Carrier Gas** He, constant flow  
**Flow Rate:** 2.0 mL/min  
**Linear Velocity:** 51.15 cm/sec @ 35 °C

**Detector** MS  
**Mode:** Scan

Group	Start Time (min)	Scan Range (amu)	Scan Rate (scans/sec)
1	0.00	35.0 - 226.00	3.8

**Transfer Line**  
**Temp.:** 250 °C  
**Analyzer Type:** Quadrupole  
**Source Type:** Extractor  
**Extractor Lens:** 6 mm ID  
**Source Temp.:** 230 °C  
**Quad Temp.:** 150 °C  
**Electron Energy:** 70.0 eV  
**Tune Type:** BFB  
**Ionization Mode:** EI  
**Preconcentrator** Markes CIA Advantage  
**Instrument** Agilent 7890B GC & 5977A MSD

