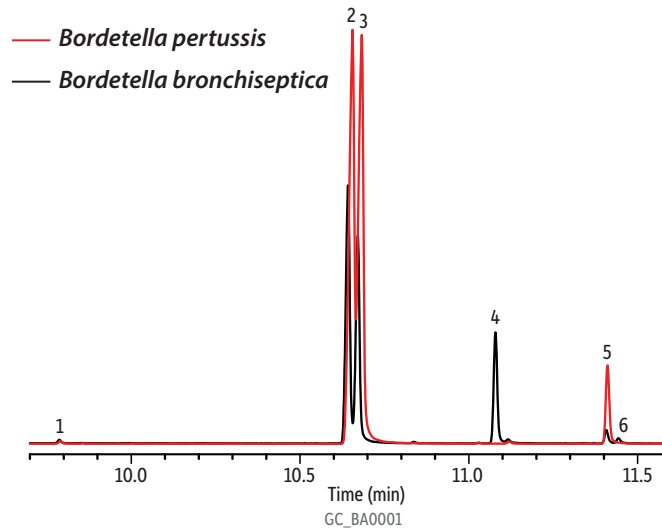


Comparison of Cell Membrane FAMES in Different Bacteria Species on Rxi®-17Sil MS

- | Peaks | Peaks |
|------------------------------------|--|
| 1. Tetradecanoic acid methyl ester | 4. 2-Hexyl-cyclopropane-octanoic acid methyl ester |
| 2. Hexadecanoic acid methyl ester | 5. Octadecanoic acid methyl ester |
| 3. Hexadecenoic acid methyl ester | 6. 9-Octadecenoic acid methyl ester |



Column Rxi®-17Sil MS, 20 m, 0.15 mm ID, 0.15 µm (cat.# 43821)
Sample FAMES in bacterial cell membrane lysates
Injection
 Inj. Vol.: 1 µL split (split ratio 50:1)
 Inj. Temp.: 250 °C
Oven
 Oven Temp.: 70 °C (hold 2 min) to 250 °C at 25 °C/min (hold 10 min)
Carrier Gas He, constant linear velocity
 Linear Velocity: 50 cm/sec
Detector DANI Master GC-TOFMS @ 25 Hz
Acknowledgement Data provided by Dr. Radomír Čabala, Head of the Toxicology Department at the General University Hospital in Prague, Czech Republic

Restek Corporation 110 Benner Circle Bellefonte, PA 16823
 1-814-353-1300 • 1-800-356-1688 • Fax: 1-814-353-1309 • www.restek.com