

GHB (Analyzed as GBL) in Urine on Rtx-5MS

Peaks

1. GBL
2. AMGB (IS)

Column Rtx-5MS, 30 m, 0.25 mm ID, 0.25 μ m
(cat.# 12623)

Sample 300 μ g/mL GHB, 50 μ g/mL AMGB
in urine, converted with sulfuric acid

Injection
Inj. Vol.: 1000 μ L headspace-syringe split
(split ratio 10:1)

Liner: 1 mm Split (cat.# 20972)

Inj. Temp.: 200 °C

Headspace-Syringe

Sample Temp.: 100 °C

Sample Equil.

Time: 10 min

Oven

Oven Temp.: 50 °C (hold 3 min) to 150 °C at
20 °C/min (hold 7 min)

Carrier Gas He, constant flow

Flow Rate: 1.0 mL/min

Detector MS

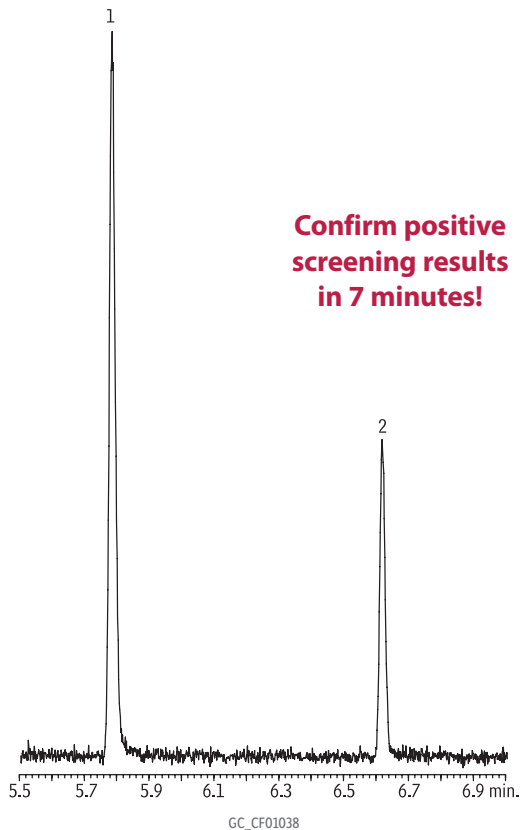
Mode: Scan

Transfer Line

Temp.: 280 °C

Ionization Mode: EI

Scan Range: 20-150 amu



© 2020 Restek Corporation. All rights reserved.
www.restek.com

Restek patents and trademarks are the property of Restek Corporation. (See www.restek.com/Patents-Trademarks for full list.) Other trademarks in Restek literature or on its website are the property of their respective owners. Restek registered trademarks are registered in the U.S. and may also be registered in other countries.