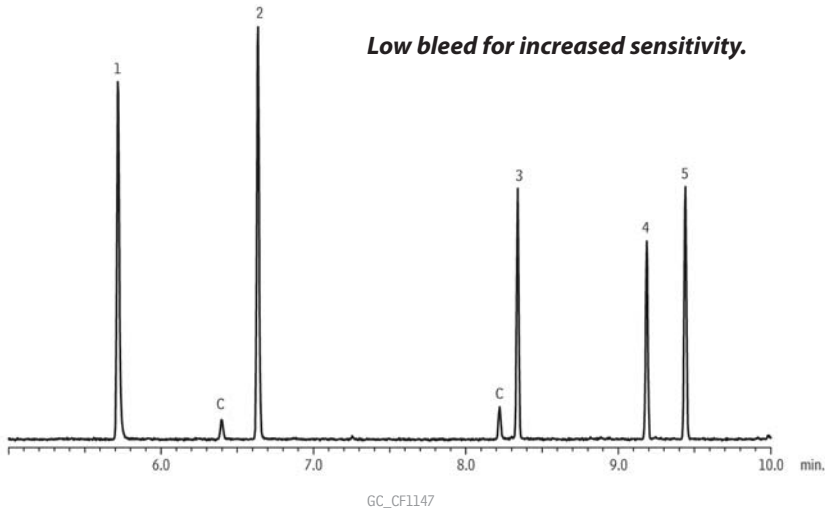


## Derivatized Amphetamines (50 ng/mL) on Rxi®-5Sil MS



Peaks	m/z 1	m/z 2	m/z 3
1. Amphetamine	118	240	91
2. Methamphetamine	254	118	91
3. MDA	135	162	240
4. MDMA	254	162	135
5. MDEA	268	240	162
C-contaminant			

**Column** Rxi®-5Sil MS, 30 m, 0.25 mm ID, 0.25  $\mu$ m (cat.# 13623)

**Sample**

Diluent: Butyl chloride

Conc.: 50 ng/mL HFAA derivatives

**Injection**

Inj. Vol.: 1  $\mu$ L splitless (hold 1 min.)

Liner: 3.5mm Gooseneck Splitless w/Wool (cat.# 22286-200.1)

Inj. Temp.: 250 °C

Purge Flow: 28.8 mL/min.

**Oven**

Oven Temp: 75 °C to 300 °C at 15 °C/min.

**Carrier Gas** He, constant linear velocity

Linear Velocity: 45 cm/sec., 13.5 psi, 93.1kPa @ 75 °C

**Detector** MS

Mode: SIM

SIM Program: 91, 118, 240, 254, 135, 162, 268 m/z

Transfer Line

Temp.: 280 °C

Analyzer Type: Quadrupole

Source Temp.: 200 °C

Solvent Delay

Time: 4 min.

Tune Type: PFTBA

Ionization Mode: EI

**Instrument** Shimadzu 2010 GC & QP2010+ MS