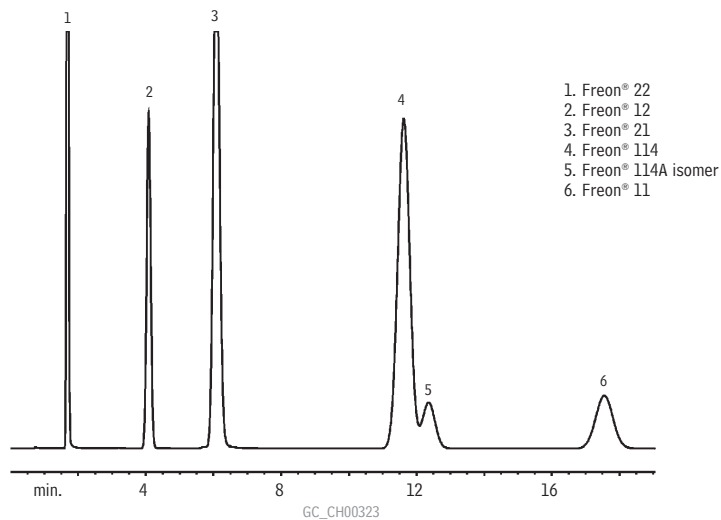


## Chlorofluorocarbons 5% Krytox on 60/80 CarboBlack™ B



5% Krytox on 60/80 CarboBlack™ B (cat.# 80127)  
3.05m, 1/8" OD x 2.1mm ID SilcoSmooth™ stainless steel tubing  
1 $\mu$ L injected, concentration 20% each component

Oven temp.: 50°C  
Inj./det. temp.: 200°C/250°C  
Carrier gas: nitrogen @ 30mL/min.  
Detector: FID