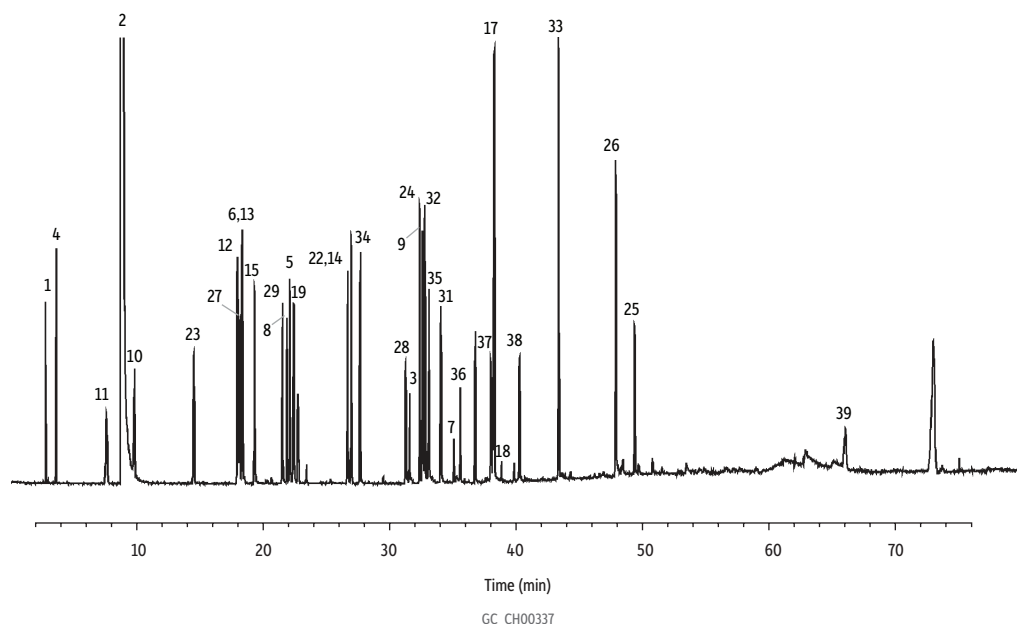


Solvent Mixture #1 on Stabilwax



1. Pentane	27. Dodecane	53. 2,6-Dimethyl-4-heptanone	79. Cyclopentanone
2. Methylene chloride	28. Undecanal	54. 2-Octanone	80. 2-Hexanol
3. Ethylene glycol	29. Tridecane	55. <i>o</i> -Cresol	81. Butyl acetate
4. Heptane	30. Unknown	56. α -Methylbenzyl alcohol	82. 2-Ethyl-1-butanol
5. Cyclopentanol	31. Dodecanal	57. 5-Nonanone	83. 3-Ethyl-3-pentanol
6. 3-Hexanol	32. Dicyclohexylamine	58. Nonanal	84. 1,4-Dichlorobutane
7. Acetamide	33. Bis(2,2-methoxy)ethyl ether	59. Decanal	85. 2-Methyl-2,4-pentanediol
8. 2-Methyl-1-pentanol	34. Pentadecane	60. Unknown	86. Butoxyethanol
9. Furfuryl alcohol	35. Heptadecane	61. 1-Decanol	87. 1,2,3-Trichloropropane
10. Butyl ether	36. Octadecane	62. 1-Undecanol	88. 1,4-Butanediol
11. Nonane	37. Nonadecane	63. 2-Dodecanone	89. Methyl hexanoate
12. Cumene	38. Eicosane	64. 1-Dodecanol	90. 1,2,4-Trimethylbenzene
13. Ethyl amyl ketone	39. Acetyl tributyl citrate	65. Tetraethylene glycol	91. 2-Ethyl-1-hexanol
14. Heptanol	40. 2-Buten-1-ol	66. Dibenzyl	92. Dipentene/limonene
15. Butyl butanoate	41. Formamide	67. Diethyl phthalate	93. Tetrahydrofurfuryl acetate
16. Unknown	42. 3-Pentanol	68. Tributyl phosphate	94. Unknown
17. Benzyl alcohol	43. 1-Nitropropane	69. Diphenyl sulfone	95. Decahydronaphthalene
18. Dipropylene glycol	44. Dimethylformamide	70. Allyl alcohol	96. Unknown
19. Benzene, diethyl-	45. 2-Methyl-3-pentanol	71. Unknown	97. Unknown
20. Unknown	46. Toluene	72. Isopropyl acetate	98. 2-Decanol
21. Unknown	47. Ethyl chloroacetate	73. Benzene	99. 1,2-Bis(2-methoxyethoxy)ethane
22. Hexachloroethane	48. Dimethylacetamide	74. 2-Nitropropane	100. 2-Phenoxyethanol
23. Undecane	49. <i>p</i> -Xylene	75. Nitroethane	101. Unknown
24. 1-Nonanol	50. <i>sec</i> -Tetrachloroethane	76. Pentanal	102. Benzyl ether
25. <i>p</i> -Methoxyphenol	51. Benzaldehyde	77. 2-Bromobutane	
26. Triethylene glycol	52. <i>o</i> -Chlorotoluene	78. 1-Chloropentane	

Column Stabilwax, 60 m, 0.53 mm ID, 1.00 μ m (cat.# 10658)
Sample Solvent mix #1
Injection
 Inj. Vol.: 1.0 μ L split
 Inj. Temp.: 275 $^{\circ}$ C
 Split Vent
 Flow Rate: 50 mL/min
Oven
 Oven Temp.: 40 $^{\circ}$ C (hold 5 min) to 250 $^{\circ}$ C at 5 $^{\circ}$ C/min
Carrier Gas He, constant flow
 Linear Velocity: 40 cm/sec
Detector MS
 Mode: Scan
 Source Temp.: 285 $^{\circ}$ C
Notes TIC using open split interface (OSI).