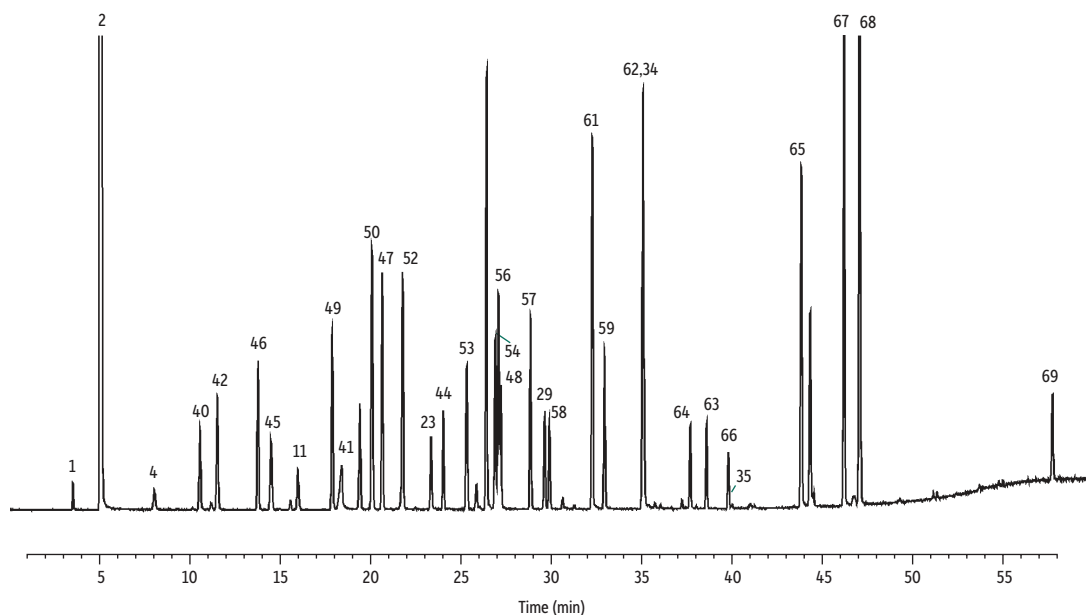


Solvent Mixture #2 on Rtx-200



GC_CH00339

- | | | | |
|-----------------------------|-----------------------------------|------------------------------------|------------------------------------|
| 1. Pentane | 27. Dodecane | 53. 2,6-Dimethyl-4-heptanone | 79. Cyclopentanone |
| 2. Methylene chloride | 28. Undecanal | 54. 2-Octanone | 80. 2-Hexanol |
| 3. Ethylene glycol | 29. Tridecane | 55. <i>o</i> -Cresol | 81. Butyl acetate |
| 4. Heptane | 30. Unknown | 56. α -Methylbenzyl alcohol | 82. 2-Ethyl-1-butanol |
| 5. Cyclopentanol | 31. Dodecanal | 57. 5-Nonanone | 83. 3-Ethyl-3-pentanol |
| 6. 3-Hexanol | 32. Dicyclohexylamine | 58. Nonanal | 84. 1,4-Dichlorobutane |
| 7. Acetamide | 33. Bis(2,2-methoxy)ethyl ether | 59. Decanal | 85. 2-Methyl-2,4-pentanediol |
| 8. 2-Methyl-1-pentanol | 34. Pentadecane | 60. Unknown | 86. Butoxyethanol |
| 9. Furfuryl alcohol | 35. Heptadecane | 61. 1-Decanol | 87. 1,2,3-Trichloropropane |
| 10. Butyl ether | 36. Octadecane | 62. 1-Undecanol | 88. 1,4-Butanediol |
| 11. Nonane | 37. Nonadecane | 63. 2-Dodecanone | 89. Methyl hexanoate |
| 12. Cumene | 38. Eicosane | 64. 1-Dodecanol | 90. 1,2,4-Trimethylbenzene |
| 13. Ethyl amyl ketone | 39. Acetyl tributyl citrate | 65. Tetraethylene glycol | 91. 2-Ethyl-1-hexanol |
| 14. Heptanol | 40. 2-Buten-1-ol | 66. Dibenzyl | 92. Dipentene/limonene |
| 15. Butyl butanoate | 41. Formamide | 67. Diethyl phthalate | 93. Tetrahydrofurfuryl acetate |
| 16. Unknown | 42. 3-Pentanol | 68. Tributyl phosphate | 94. Unknown |
| 17. Benzyl alcohol | 43. 1-Nitropropane | 69. Diphenyl sulfone | 95. Decahydronaphthalene |
| 18. Dipropylene glycol | 44. Dimethylformamide | 70. Allyl alcohol | 96. Unknown |
| 19. Benzene, diethyl- | 45. 2-Methyl-3-pentanol | 71. Unknown | 97. Unknown |
| 20. Unknown | 46. Toluene | 72. Isopropyl acetate | 98. 2-Decanol |
| 21. Unknown | 47. Ethyl chloroacetate | 73. Benzene | 99. 1,2-Bis(2-methoxyethoxy)ethane |
| 22. Hexachloroethane | 48. Dimethylacetamide | 74. 2-Nitropropane | 100. 2-Phenoxyethanol |
| 23. Undecane | 49. <i>p</i> -Xylene | 75. Nitroethane | 101. Unknown |
| 24. 1-Nonanol | 50. <i>sec</i> -Tetrachloroethane | 76. Pentanal | 102. Benzyl ether |
| 25. <i>p</i> -Methoxyphenol | 51. Benzaldehyde | 77. 2-Bromobutane | |
| 26. Triethylene glycol | 52. <i>o</i> -Chlorotoluene | 78. 1-Chloropentane | |

Column Rtx-200, 60 m, 0.53 mm ID, 3.00 μ m (cat.# 15088)
Sample Solvent mix #2
Injection
 Inj. Vol.: 1.0 μ L split
 Inj. Temp.: 275 $^{\circ}$ C
 Split Vent
 Flow Rate: 50 mL/min
Oven
 Oven Temp.: 40 $^{\circ}$ C (hold 5 min) to 285 $^{\circ}$ C at 5 $^{\circ}$ C/min
Carrier Gas He, constant flow
 Linear Velocity: 40 cm/sec
Detector MS
 Mode: Scan
 Source Temp.: 285 $^{\circ}$ C
Notes TIC using open split interface (OSI).