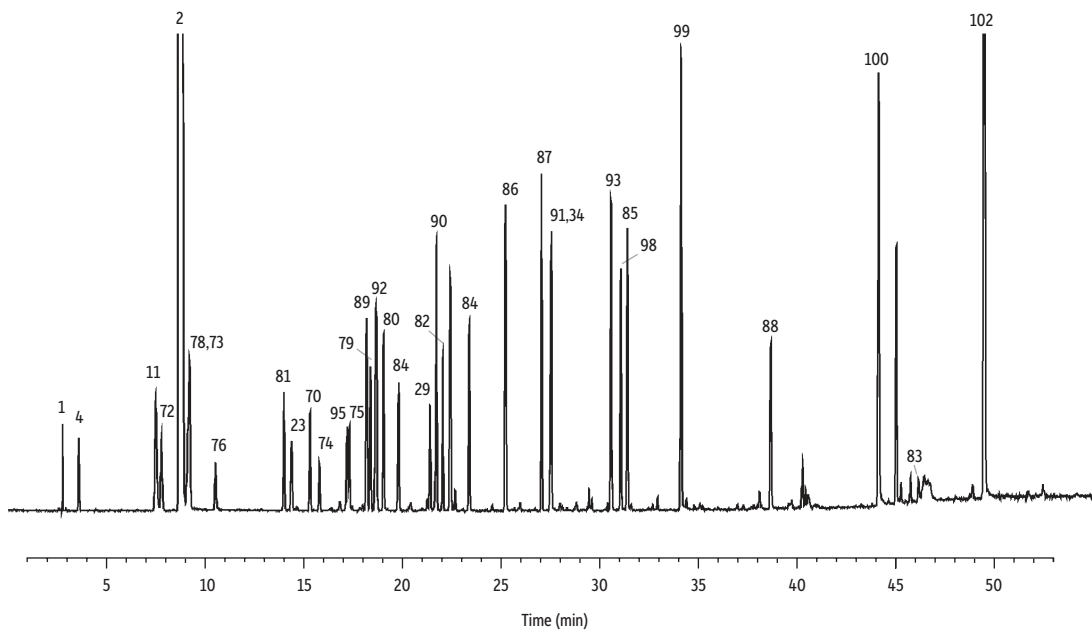


# Solvent Mixture #3 on Stabilwax



GC\_CH00343

- |                             |                                   |                                    |                                    |
|-----------------------------|-----------------------------------|------------------------------------|------------------------------------|
| 1. Pentane                  | 27. Dodecane                      | 53. 2,6-Dimethyl-4-heptanone       | 79. Cyclopentanone                 |
| 2. Methylene chloride       | 28. Undecanal                     | 54. 2-Octanone                     | 80. 2-Hexanol                      |
| 3. Ethylene glycol          | 29. Tridecane                     | 55. <i>o</i> -Cresol               | 81. Butyl acetate                  |
| 4. Heptane                  | 30. Unknown                       | 56. $\alpha$ -Methylbenzyl alcohol | 82. 2-Ethyl-1-butanol              |
| 5. Cyclopentanol            | 31. Dodecanal                     | 57. 5-Nonanone                     | 83. 3-Ethyl-3-pentanol             |
| 6. 3-Hexanol                | 32. Dicyclohexylamine             | 58. Nonanal                        | 84. 1,4-Dichlorobutane             |
| 7. Acetamide                | 33. Bis(2,2-methoxy)ethyl ether   | 59. Decanal                        | 85. 2-Methyl-2,4-pentanediol       |
| 8. 2-Methyl-1-pentanol      | 34. Pentadecane                   | 60. Unknown                        | 86. Butoxyethanol                  |
| 9. Furfuryl alcohol         | 35. Heptadecane                   | 61. 1-Decanol                      | 87. 1,2,3-Trichloropropane         |
| 10. Butyl ether             | 36. Octadecane                    | 62. 1-Undecanol                    | 88. 1,4-Butanediol                 |
| 11. Nonane                  | 37. Nonadecane                    | 63. 2-Dodecanone                   | 89. Methyl hexanoate               |
| 12. Cumene                  | 38. Eicosane                      | 64. 1-Dodecanol                    | 90. 1,2,4-Trimethylbenzene         |
| 13. Ethyl amyl ketone       | 39. Acetyl tributyl citrate       | 65. Tetraethylene glycol           | 91. 2-Ethyl-1-hexanol              |
| 14. Heptanol                | 40. 2-Buten-1-ol                  | 66. Dibenzyl                       | 92. Dipentene/limonene             |
| 15. Butyl butanoate         | 41. Formamide                     | 67. Diethyl phthalate              | 93. Tetrahydrofurfuryl acetate     |
| 16. Unknown                 | 42. 3-Pentanol                    | 68. Tributyl phosphate             | 94. Unknown                        |
| 17. Benzyl alcohol          | 43. 1-Nitropropane                | 69. Diphenyl sulfone               | 95. Decahydronaphthalene           |
| 18. Dipropylene glycol      | 44. Dimethylformamide             | 70. Allyl alcohol                  | 96. Unknown                        |
| 19. Benzene, diethyl-       | 45. 2-Methyl-3-pentanol           | 71. Unknown                        | 97. Unknown                        |
| 20. Unknown                 | 46. Toluene                       | 72. Isopropyl acetate              | 98. 2-Decanol                      |
| 21. Unknown                 | 47. Ethyl chloroacetate           | 73. Benzene                        | 99. 1,2-Bis(2-methoxyethoxy)ethane |
| 22. Hexachloroethane        | 48. Dimethylacetamide             | 74. 2-Nitropropane                 | 100. 2-Phenoxyethanol              |
| 23. Undecane                | 49. <i>p</i> -Xylene              | 75. Nitroethane                    | 101. Unknown                       |
| 24. 1-Nonanol               | 50. <i>sec</i> -Tetrachloroethane | 76. Pentanal                       | 102. Benzyl ether                  |
| 25. <i>p</i> -Methoxyphenol | 51. Benzaldehyde                  | 77. 2-Bromobutane                  |                                    |
| 26. Triethylene glycol      | 52. <i>o</i> -Chlorotoluene       | 78. 1-Chloropentane                |                                    |

**Column** Stabilwax, 60 m, 0.53 mm ID, 1.00  $\mu$ m (cat.# 10658)  
**Sample** Solvent mix #3  
**Injection**  
 Inj. Vol.: 1.0  $\mu$ L split  
 Inj. Temp.: 275  $^{\circ}$ C  
 Split Vent  
 Flow Rate: 50 mL/min  
**Oven**  
 Oven Temp.: 40  $^{\circ}$ C (hold 5 min) to 250  $^{\circ}$ C at 5  $^{\circ}$ C/min  
**Carrier Gas** He, constant flow  
 Linear Velocity: 40 cm/sec  
**Detector** MS  
 Mode: Scan  
 Source Temp.: 285  $^{\circ}$ C  
**Notes** TIC using open split interface (OSI).