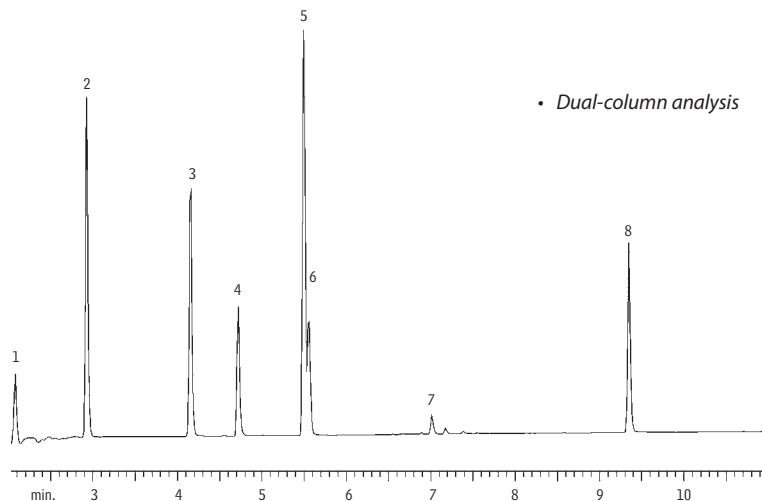
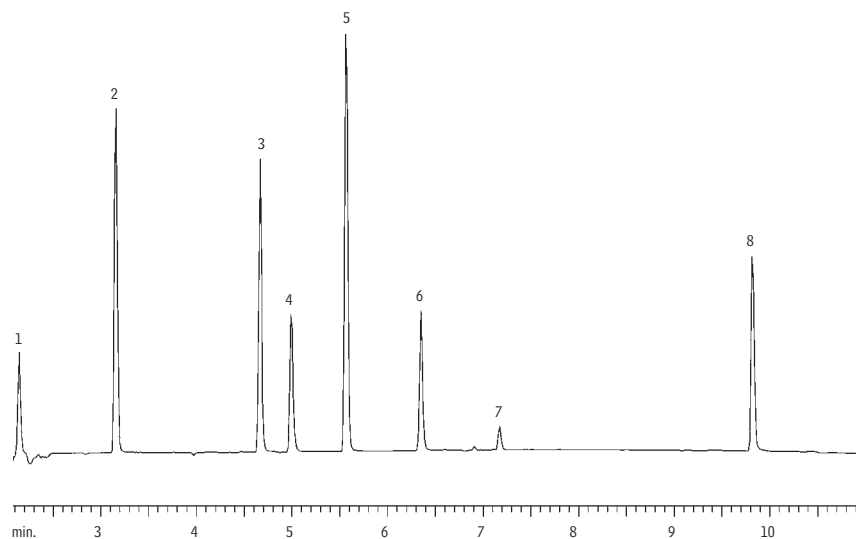


**EDB / DBCP**  
**US EPA Method 504.1**  
**Rtx®-CLPesticides & Rtx®-CLPesticides2**

**Rtx®-CLPesticides**



**Rtx®-CLPesticides2**



GC\_EV00020

1. chloroform
2. bromodichloromethane
3. chlorodibromomethane
4. 1,2-dibromoethane (EDB)
5. 1,1,1,2-tetrachloroethane
6. bromoform
7. 1,2,3-trichloropropane
8. 1,2-dibromo-3-chloropropane (DBCP)

30m, 0.32mm ID, 0.50 $\mu$ m Rtx®-CLPesticides (cat.# 11139) and  
30m, 0.32mm ID, 0.25 $\mu$ m Rtx®-CLPesticides2 (cat.# 11324),  
0.32mm ID guard column (cat.# 10044), universal angled  
"Y" Press-Tight® connector (cat.# 20403).  
Direct injection using a Uniliner® liner (cat.#20335).  
On-column conc.: 10pg each compound.  
Oven temp.: 35°C (hold 2 min.) to 300°C @ 12°C/min.  
Inj./det. temp.: 200°C/300°C  
Carrier gas: helium, 12psi constant pressure.