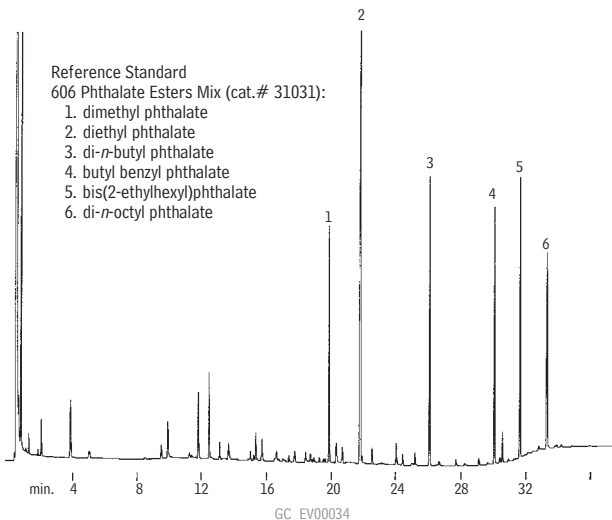


Phthalate Esters

US EPA Method 606

Rtx[®]-5



30m, 0.53mm ID, 1.5 μ m Rtx[®]-5 (cat.# 10270)
2.5 μ L direct injection of phthalate esters.
Concentration approximately 25ng per component.

Oven temp.: 40°C (hold 6 min.) to 300°C
@ 10°C/min. (hold 15 min.)
Inj. & det. temp.: 300°C
Carrier gas: hydrogen
Linear velocity: 80cm/sec. (flow rate: 10cc/min.)
FID sensitivity: 8 x 10⁻¹¹ AFS

Restek Corporation 110 Benner Circle Bellefonte, PA 16823
814-353-1300 • 800-356-1688 • Fax: 814-353-1309 • www.restek.com