

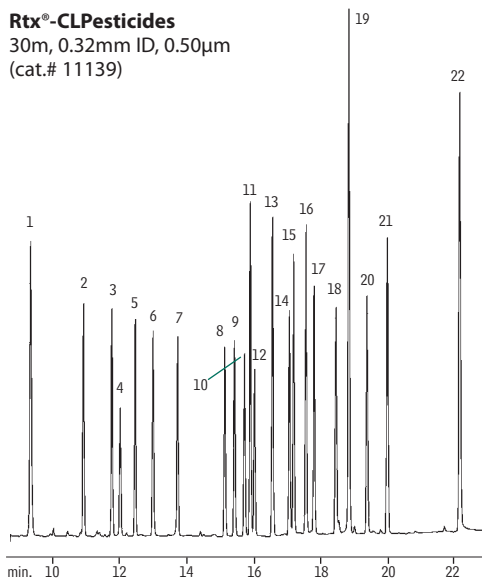
Organochlorine Pesticides

US EPA Method 8081

Rtx[®]-CLPesticides & Rtx[®]-CLPesticides2 (0.32mm ID)

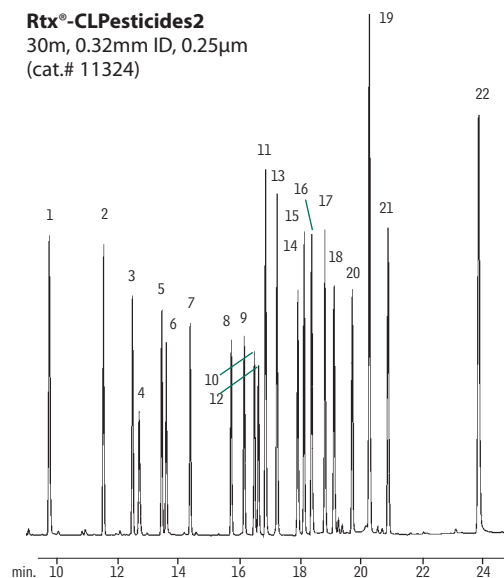
Rtx[®]-CLPesticides

30m, 0.32mm ID, 0.50µm
(cat.# 11139)



Rtx[®]-CLPesticides2

30m, 0.32mm ID, 0.25µm
(cat.# 11324)



1. 2,4,5,6-tetrachloro-*m*-xylene
2. α -BHC (α -HCH)
3. γ -BHC (lindane)
4. β -BHC (β -HCH)
5. δ -BHC (δ -HCH)
6. heptachlor
7. aldrin
8. heptachlor epoxide
9. γ -chlordane
10. α -chlordane
11. 4,4'-DDE
12. endosulfan I
13. dieldrin
14. endrin
15. 4,4'-DDD
16. endosulfan II
17. 4,4'-DDT
18. endrin aldehyde
19. methoxychlor
20. endosulfan sulfate
21. endrin ketone
22. decachlorobiphenyl

GC_EV00075

On-column

concentration: 16–160pg Organochlorine Pesticide Mix AB#2 (cat.# 32292), Pesticide Surrogate Mix (cat.# 32000)

Oven temp.: 120°C (hold 1 min.) to 300°C (hold 10 min.) @ 9°C/min.

Inj.: direct, Uniliner[®] liner (cat.# 20335), 200°C

Detector: ECD, 300°C with anode purge

Dead time: 1.9 min.

Head pressure: 8.7psi (constant)

Flow rate: 1.3mL/min. @ 120°C, helium

Restek Corporation 110 Benner Circle Bellefonte, PA 16823

814-353-1300 • 800-356-1688 • Fax: 814-353-1309 • www.restek.com