

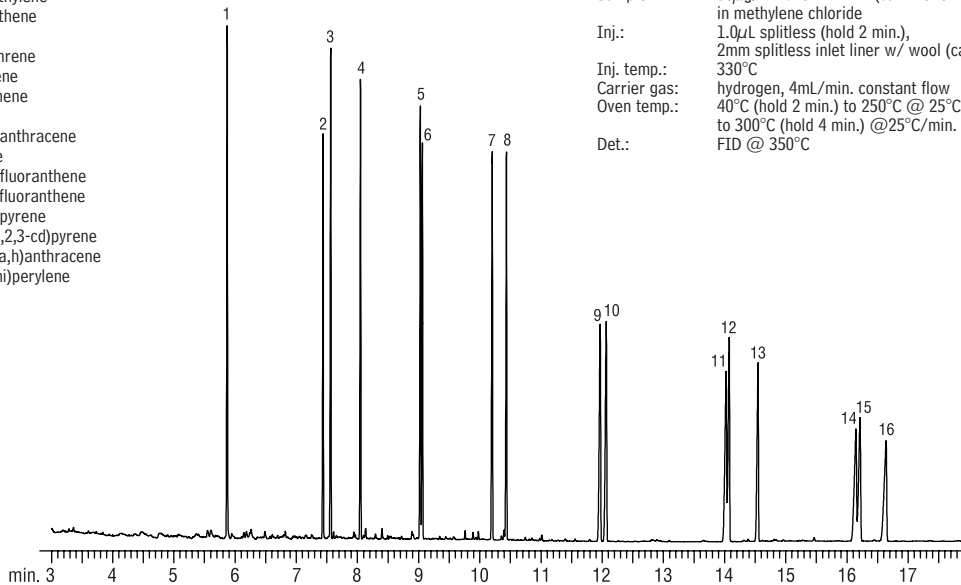
Polynuclear Aromatic Hydrocarbons

US EPA Method 610

Rtx®-CLPesticides2

1. naphthalene
2. acenaphthylene
3. acenaphthene
4. fluorene
5. phenanthrene
6. anthracene
7. fluoranthene
8. pyrene
9. benzo(a)anthracene
10. chrysene
11. benzo(b)fluoranthene
12. benzo(k)fluoranthene
13. benzo(a)pyrene
14. indeno(1,2,3-cd)pyrene
15. dibenzo(a,h)anthracene
16. benzo(ghi)perylene

Column: Rtx®-CLPesticides2 30m, 0.25mm ID, 0.20 μ m (cat.# 11323)
Sample: 50 μ g/mL 610 PAH Mix (cat.# 31011)
in methylene chloride
Inj.: 1.0 μ L splitless (hold 2 min.),
2mm splitless inlet liner w/ wool (cat.# 20829)
Inj. temp.: 330°C
Carrier gas: hydrogen, 4mL/min. constant flow
Oven temp.: 40°C (hold 2 min.) to 250°C @ 25°C/min. to 265°C @ 5°C/min.
to 300°C (hold 4 min.) @25°C/min.
Det.: FID @ 350°C



GC_EV00596