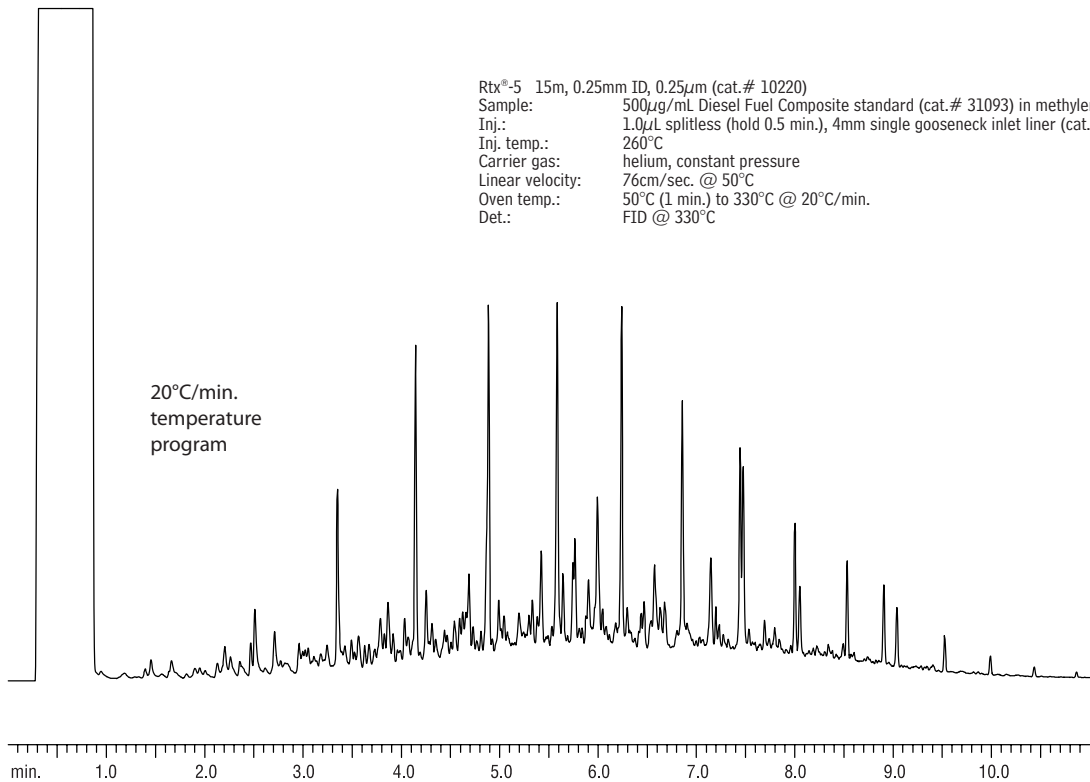


Diesel Fuel Rtx®-5



Rtx®-5 15m, 0.25mm ID, 0.25 μ m (cat.# 10220)
Sample: 500 μ g/mL Diesel Fuel Composite standard (cat.# 31093) in methylene chloride
Inj.: 1.0 μ L splitless (hold 0.5 min.), 4mm single gooseneck inlet liner (cat.# 20904)
Inj. temp.: 260°C
Carrier gas: helium, constant pressure
Linear velocity: 76cm/sec. @ 50°C
Oven temp.: 50°C (1 min.) to 330°C @ 20°C/min.
Det.: FID @ 330°C

20°C/min.
temperature
program

GC_EV00669