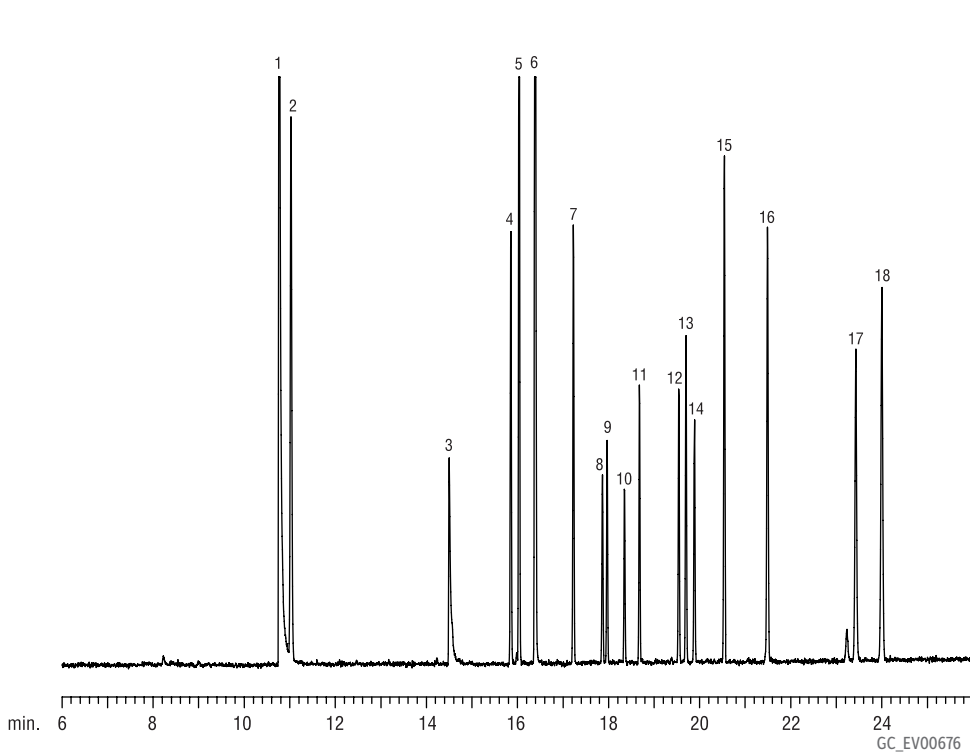


# Organophosphorus Pesticides (European) on Rtx®-CLPesticides



Peaks	ng (on-column amount)
1. Methamidophos	1.25
2. Dichlorvos	1.25
3. Acephate	0.50
4. Demeton-S-methyl	0.50
5. Tributylphosphate (IS)	1.25
6. Omethoate	2.50
7. Dimethoate	0.50
8. Tolclofos-methyl	0.25
9. Pirimiphos methyl	0.25
10. Chlorpyrifos	0.25
11. Malathion	0.50
12. Prothiofos	0.50
13. Methidathion	0.50
14. Profenofos	0.50
15. Ethion	0.50
16. Triphenylphosphate (SS)	1.25
17. Azinphos-Methyl	1.00
18. Pyrazophos	1.25

**Column** Rtx®-CLPesticides, 30 m, 0.32 mm ID, 0.50 µm (cat.# 11139)

**Sample** Organophosphorus Pesticide Mix, European Formulation (cat.# 32418)

**Diluent:** acetone

**Conc.:** 100-1000 µg/mL

**Injection**

**Inj. Vol.:** 0.5 µL direct

**Liner:** Drilled Uniliner, Siltek® (hole near top) (cat.# 21055-214.5)

**Inj. Temp.:** 250 °C

**Oven**

**Oven Temp:** 80 °C (hold 1 min.) to 150 °C at 7 °C/min. to 280 °C at 15 °C/min. (hold 10 min.)

**Carrier Gas** He, constant pressure

**Linear Velocity:** 35 cm/sec. @ 80 °C

**Detector** FPD @ 280 °C