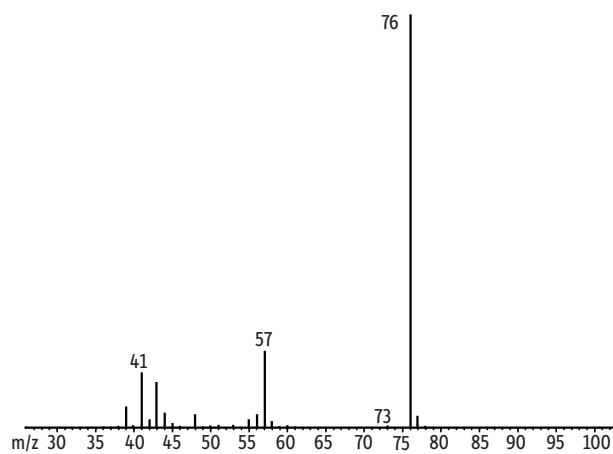


**Mass Spectrum of Methyl tert-Butyl Ether-d3 on Rtx®-VMS  
by EPA Method 8260**



GC\_EV00688

<b>Column</b>	Rtx®-VMS, 30 m, 0.25 mm ID, 1.4 µm (cat.# 19915)	<b>Carrier Gas</b>	He, constant flow
<b>Sample</b>	Custom	<b>Flow Rate:</b>	1.3 mL/min.
<b>Injection</b>	purge and trap split (split ratio 25:1)	<b>Dead Time:</b>	1.47 min. @ 35 °C
<b>Inj. Temp.:</b>	250 °C	<b>Detector</b>	Agilent 5971A GC/MS
<b>Purge and Trap</b>		<b>Transfer Line</b>	
<b>Instrument:</b>	O.I. Analytical 4560 with 4551A Autosampler	<b>Temp.:</b>	280 °C
<b>Trap Type:</b>	#10 (Tenax®/silica gel/carbon molecular sieve)	<b>Tune Type:</b>	PFTBA/BFB
<b>Purge:</b>	11 min. @ 20 °C, flow 38 ml/min.	<b>Scan Range:</b>	35-260 amu
<b>Desorb Preheat</b>		<b>Notes</b>	Sample size: 10 mL
<b>Temp.:</b>	150 °C		Sample temp: 40 °C
<b>Desorb:</b>	1.0 min. @ 190 °C, flow 32 ml/min.		Water management: 110 °C purge, 0 °C desorb, 240 °C bake
<b>Bake:</b>	10 min. @ 210 °C		6-Port valve: 110 °C
<b>Transfer Line</b>			Sparge mount: 45 °C
<b>Temp.:</b>	110 °C		Valve manifold: 50 °C
<b>Oven</b>			Other Conditions: prepurge, preheat, dry purge OFF
<b>Oven Temp:</b>	35 °C (hold 7 min.) to 90 °C at 4 °C/min. to 220 °C at 45 °C/min. (hold 1 min.)	<b>Acknowledgement</b>	Purge & trap courtesy of O.I. Analytical

Restek Corporation 110 Benner Circle Bellefonte, PA 16823

1-814-353-1300 • 1-800-356-1688 • Fax: 1-814-353-1309 • www.restek.com