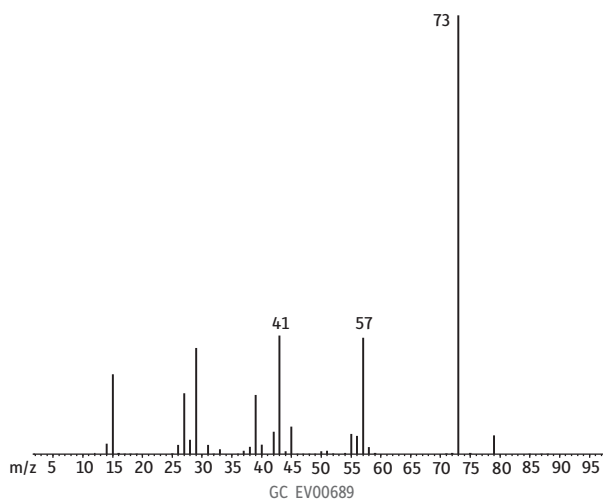


**Mass Spectrum of Methyl tert-Butyl Ether-d3 on Rtx®-VMS
by EPA Method 8260**



Column	Rtx®-VMS, 30 m, 0.25 mm ID, 1.4 µm (cat.# 19915)	Carrier Gas	He, constant flow
Sample Injection	Custom purge and trap split (split ratio 25:1)	Flow Rate:	1.3 mL/min
Inj. Temp.:	250 °C	Dead Time:	1.47 min @ 35 °C
Purge and Trap		Detector	Agilent 5971A GC/MS
Instrument:	O.I. Analytical 4560 with 4551A Autosampler	Transfer Line Temp.:	280 °C
Trap Type:	#10 (Tenax®/silica gel/carbon molecular sieve)	Tune Type:	PFTBA/BFB
Purge:	11 min @ 20 °C, flow 38 mL/min	Scan Range:	35-260 amu
Desorb Preheat Temp.:	150 °C	Notes	Sample size: 10 mL Sample temp: 40 °C Water management: 110 °C purge, 0 °C desorb, 240 °C bake 6-Port valve: 110 °C Sparge mount: 45 °C Valve manifold: 50 °C Other Conditions: prepurge, preheat, dry purge OFF
Desorb:	1.0 min @ 190 °C, flow 32 mL/min	Acknowledgement	Purge & trap courtesy of O.I. Analytical
Bake:	10 min @ 210 °C		
Transfer Line Temp.:	110 °C		
Oven			
Oven Temp:	35 °C (hold 7 min) to 90 °C at 4 °C/min to 220 °C at 45 °C/min (hold 1 min)		

Restek Corporation 110 Benner Circle Bellefonte, PA 16823
1-814-353-1300 • 1-800-356-1688 • Fax: 1-814-353-1309 • www.restek.com