

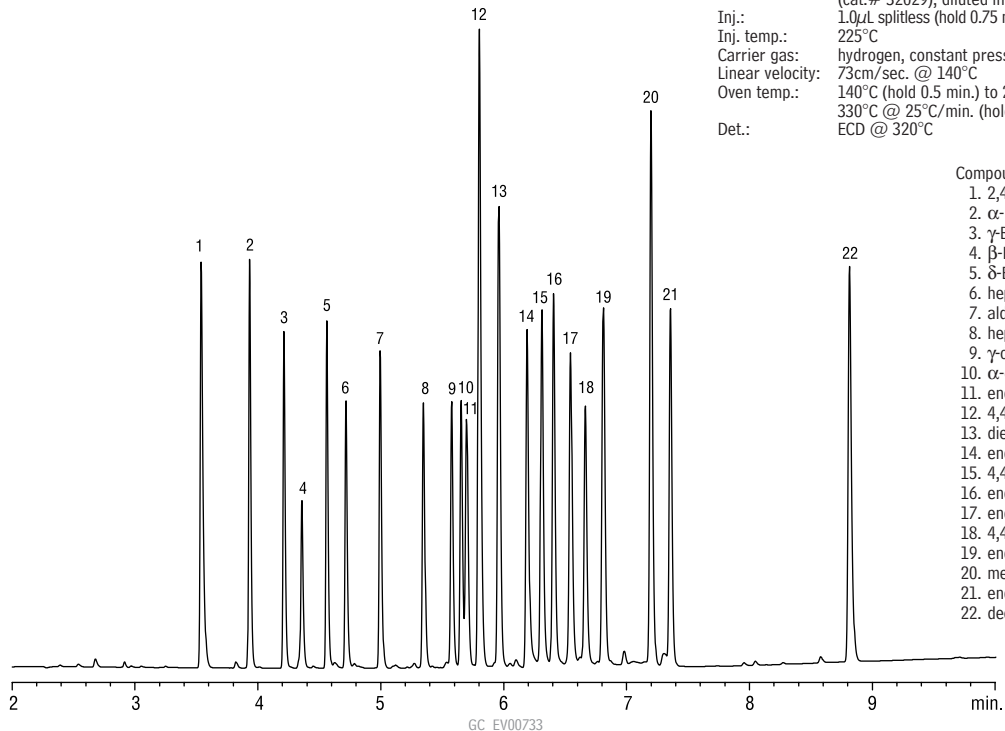
Organochlorine Pesticides
US EPA Method 8081
Rtx®-440

Rtx®-440 30m, 0.32mm ID, 0.50µm (cat.# 12939), intermediate-polarity deactivated guard column, 5m x 0.32mm ID (cat.# 10044)

Sample: Organochlorine Pesticide Mix AB #2 (cat.# 32292), 2,4,5,6-tetrachloro-*m*-xylene (ss) (cat.# 32027), decachlorobiphenyl (ss)

(cat.# 32029), diluted in hexane, on-column amounts listed on figure 1.0µL splitless (hold 0.75 min.), 4mm Drilled Uniliner® inlet liner (cat.# 21055)

Inj.:
 Inj. temp.: 225°C
 Carrier gas: hydrogen, constant pressure
 Linear velocity: 73cm/sec. @ 140°C
 Oven temp.: 140°C (hold 0.5 min.) to 268°C @ 30°C/min., to 290°C @ 11°C/min., to 330°C @ 25°C/min. (hold 5 min.)
 Det.: ECD @ 320°C



Compound	Conc. (ppb)	RT (min.)
1. 2,4,5,6-tetrachloro- <i>m</i> -xylene (ss)	80	3.538
2. α-BHC	80	3.931
3. γ-BHC	80	4.211
4. β-BHC	80	4.356
5. δ-BHC	80	4.560
6. heptachlor	80	4.715
7. aldrin	80	4.995
8. heptachlor epoxide	80	5.346
9. γ-chlordane	80	5.576
10. α-chlordane	80	5.653
11. endosulfan I	80	5.698
12. 4,4'-DDE	160	5.800
13. dieldrin	160	5.959
14. endrin	160	6.190
15. 4,4'-DDD	160	6.309
16. endosulfan II	160	6.404
17. endrin aldehyde	160	6.543
18. 4,4'-DDT	160	6.662
19. endosulfan sulfate	160	6.810
20. methoxychlor	800	7.198
21. endrin ketone	160	7.355
22. decachlorobiphenyl (ss)	160	8.813