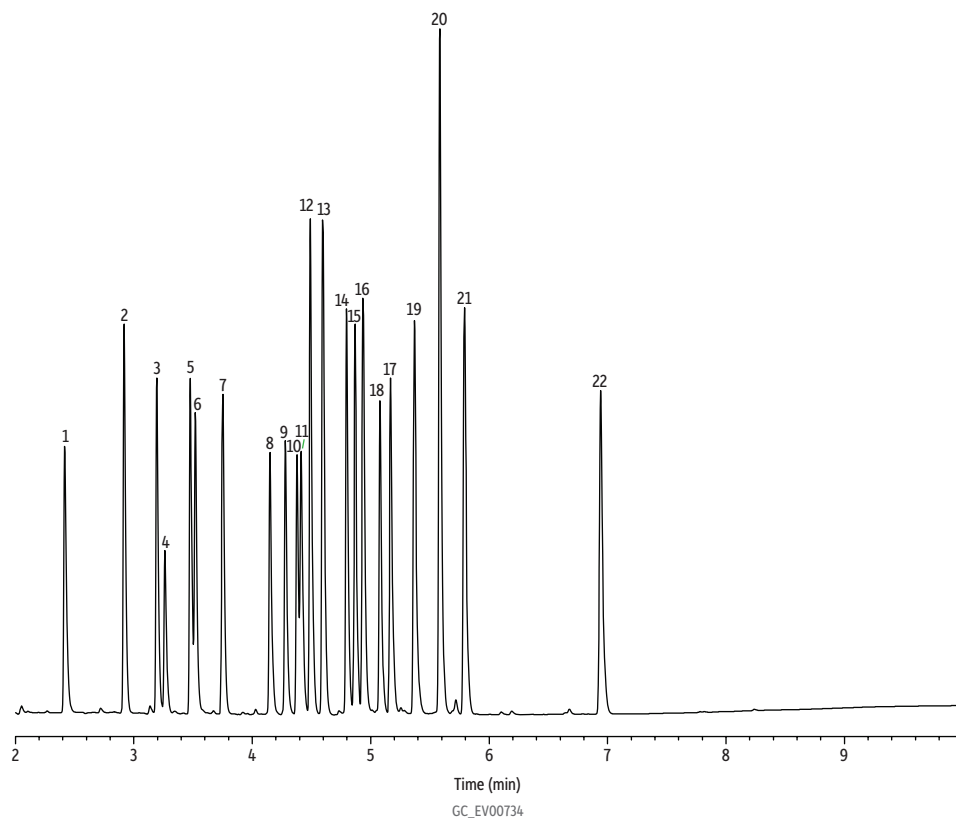


# Organochlorine Pesticides by U.S. EPA Method 8081 on Rtx-CLPesticides2



Peaks	ts (min)	Conc. (ng/mL)
1. 2,4,5,6-Tetrachloro- <i>m</i> -xylene (SS)	2.415	80
2. $\alpha$ -BHC	2.916	80
3. $\gamma$ -BHC	3.192	80
4. $\beta$ -BHC	3.260	80
5. $\delta$ -BHC	3.476	80
6. Heptachlor	3.518	80
7. Aldrin	3.749	80
8. Heptachlor epoxide	4.149	80
9. <i>trans</i> -Chlordane	4.277	80
10. <i>cis</i> -Chlordane	4.376	80
11. Endosulfan I	4.412	80
12. 4,4'-DDE	4.489	160
13. Dieldrin	4.594	160
14. Endrin	4.794	160
15. 4,4'-DDD	4.866	160
16. Endosulfan II	4.934	160
17. Endrin aldehyde	5.167	160
18. 4,4'-DDT	5.078	160
19. Endosulfan sulfate	5.368	160
20. Methoxychlor	5.582	800
21. Endrin ketone	5.790	160
22. Decachlorobiphenyl (SS)	6.940	160

**Column** Rtx-CLPesticides2, 30 m, 0.32 mm ID, 0.25  $\mu$ m (cat.# 11324) using IP deactivated guard column 5 m, 0.32 mm ID (cat.# 10044)

**Standard/Sample** Organochlorine pesticide mix AB #2 (cat.# 32292)  
2,4,5,6-Tetrachloro-*m*-xylene (cat.# 32027)  
Decachlorobiphenyl (BZ #209) (cat.# 32029)

**Diluent:** Hexane

**Injection**

Inj. Vol.: 1.0  $\mu$ L splitless (hold 0.75 min)  
Liner: Drilled Uniliner (hole near top) (cat.# 21055)  
Inj. Temp.: 225 °C

**Oven**

Oven Temp.: 140 °C (hold 0.5 min) to 268 °C at 30 °C/min to 290 °C at 11 °C/min to 330 °C at 25 °C/min (hold 5 min)

**Carrier Gas**

Linear Velocity: H<sub>2</sub>, constant pressure  
77 cm/sec @ 140 °C

**Detector**

ECD @ 320 °C