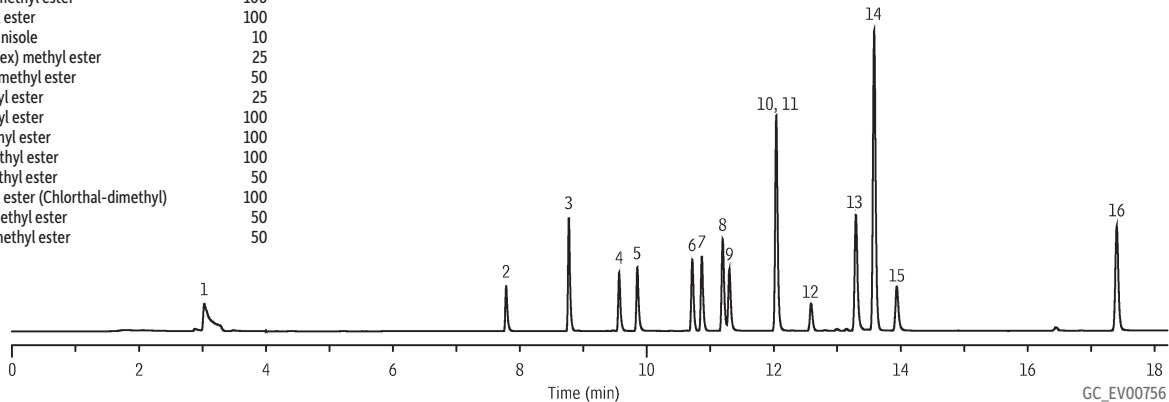


# Chlorophenoxyacid Herbicides (methyl esters) US EPA Method 515 by GC/ECD on Rtx®-440

Peaks	Conc. (µg/mL)
1. Dalapon methyl ester	100
2. 3,5-Dichlorobenzoic acid methyl ester	50
3. Dicamba methyl ester	50
4. Dichlorprop methyl ester	100
5. 2,4-D methyl ester	100
6. Pentachloroanisole	10
7. 2,4,5-TP (Silvex) methyl ester	25
8. Chloramben methyl ester	50
9. 2,4,5-T methyl ester	25
10. 2,4-DB methyl ester	100
11. Dinoseb methyl ester	100
12. Bentazon methyl ester	100
13. Picloram-methyl ester	50
14. DCPA methyl ester (Chlorthal-dimethyl)	100
15. Quinclorac methyl ester	50
16. Acifluorfen methyl ester	50



**Column** Rtx®-440, 30 m, 0.32 mm ID, 0.25 µm (cat.# 12924)  
**Sample** 515.4 Methylated Chlorinated Acids Mix (cat.# 32444)  
**Diluent:** MTBE  
**Conc.:** 10-100 µg/mL each methyl ester  
**Injection**  
**Inj. Vol.:** 1.0 µL splitless (hold 0.45 min)  
**Liner:** Double Gooseneck Splitless (4mm) (cat.# 20784)  
**Inj. Temp.:** 225 °C  
**Oven**  
**Oven Temp.:** 70 °C (hold 1 min) to 210 °C at 20 °C/min (hold 1 min) to 300 °C at 5 °C/min  
**Carrier Gas** He, constant pressure (10.5 psi, 72.4 kPa)  
**Temp.:** 70 °C  
**Detector** ECD @ 320 °C