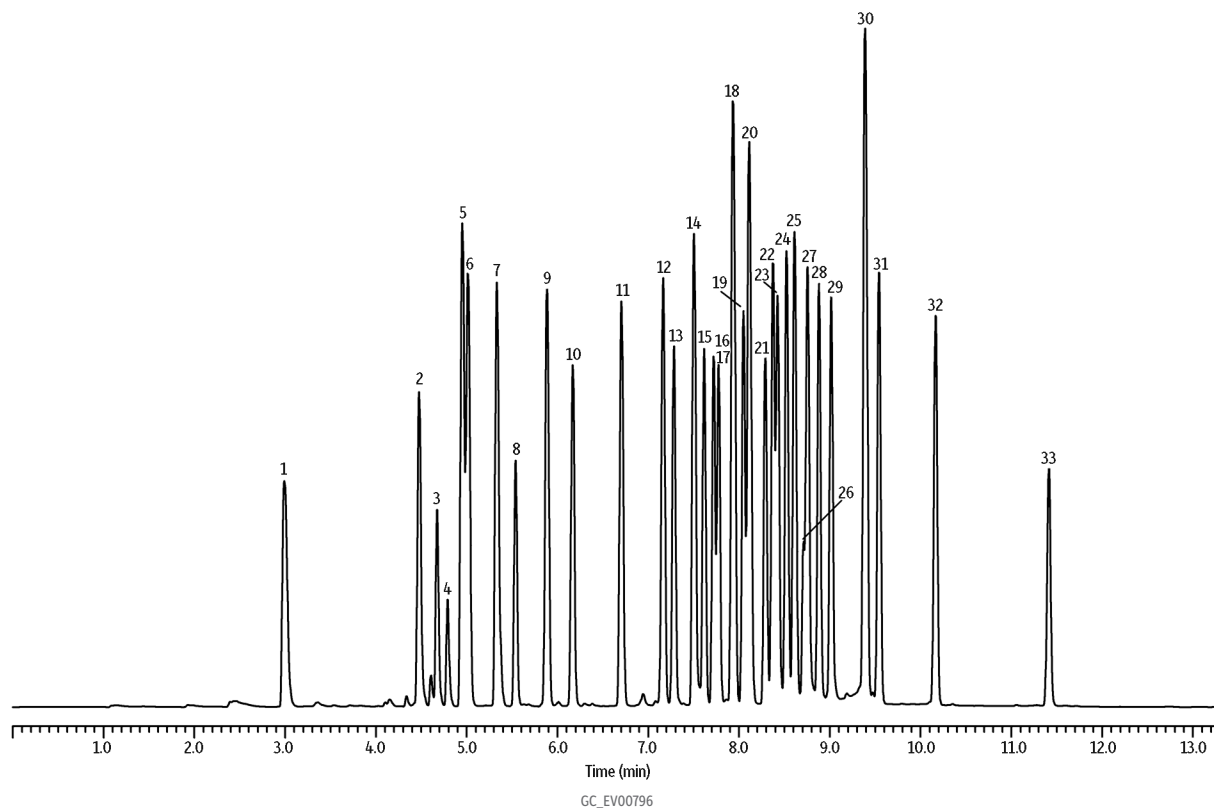


Organochlorine Pesticides by EPA Method 8081A on Rtx-440 (dual column w/ Rtx-CLPesticides2)



Peaks

- | | | |
|-----------------------------------------------|-----------------------------|-----------------------------|
| 1. Hexachlorocyclopentadiene | 12. Isodrin | 23. 2,4'-DDT |
| 2. 2,4,5,6-Tetrachloro- <i>m</i> -xylene (SS) | 13. Heptachlor epoxide | 24. 4,4'-DDD |
| 3. <i>cis</i> -Diallate | 14. 2,4'-DDE | 25. Endosulfan II |
| 4. <i>trans</i> -Diallate | 15. <i>trans</i> -Chlordane | 26. Kepone |
| 5. α -BHC | 16. <i>cis</i> -Chlordane | 27. Endrin aldehyde |
| 6. Hexachlorobenzene | 17. Endosulfan I | 28. 4,4'-DDT |
| 7. γ -BHC | 18. 4,4'-DDE | 29. Endosulfan sulfate |
| 8. β -BHC | 19. 2,4'-DDD | 30. Methoxychlor |
| 9. δ -BHC | 20. Dieldrin | 31. Endrin ketone |
| 10. Heptachlor | 21. Chlorobenzilate | 32. Mirex |
| 11. Aldrin | 22. Endrin | 33. Decachlorobiphenyl (SS) |

Column Rtx-440, 30 m, 0.32 mm ID, 0.50 μ m (cat.# 12939)
Standard/Sample Organochlorine pesticide mix AB #2, 8-80 μ g/mL in ethyl acetate (cat.# 32292)
 Chlorobenzilate, 1,000 μ g/mL in methanol (cat.# 32211)
 Hexachlorobenzene, 1,000 μ g/mL in acetone (cat.# 32231)
 Hexachlorocyclopentadiene, 1,000 μ g/mL in methanol (cat.# 32232)
 2,4'-DDD, 1,000 μ g/mL in methanol (cat.# 32098)
 2,4'-DDE, 1,000 μ g/mL in methanol (cat.# 32099)
 2,4'-DDT, 1,000 μ g/mL in methanol (cat.# 32200)
 2,4,5,6-Tetrachloro-*m*-xylene, 200 μ g/mL in acetone (cat.# 32027)
 Decachlorobiphenyl (BZ #209), 200 μ g/mL in acetone (cat.# 32029)
 Diallate (*cis* & *trans*), 1,000 μ g/mL in hexane (cat.# custom)
 Isodrin, 1,000 μ g/mL in hexane (cat.# custom)
 Kepone, 1,000 μ g/mL in hexane (cat.# custom)
 Mirex, 1,000 μ g/mL in hexane (cat.# custom)

Injection

Inj. Vol.: 1.0 μ L splitless (hold 0.75 min)
 Liner: Siltek single taper (cat.# 20961-214.1)
 Inj. Temp.: 275 $^{\circ}$ C

Oven

Oven Temp.: 140 $^{\circ}$ C (hold 1 min) to 240 $^{\circ}$ C at 30 $^{\circ}$ C/min (hold 2 min) to 330 $^{\circ}$ C at 30 $^{\circ}$ C/min (hold 4 min)

Carrier Gas

Linear Velocity: H₂, constant pressure

51 cm/sec @ 140 $^{\circ}$ C

Detector

ECD @ 330 $^{\circ}$ C

Instrument

Shimadzu 2010 GC

Notes

Rtx-CLPesticides2 analysis shown in chromatogram GC_EV00797.