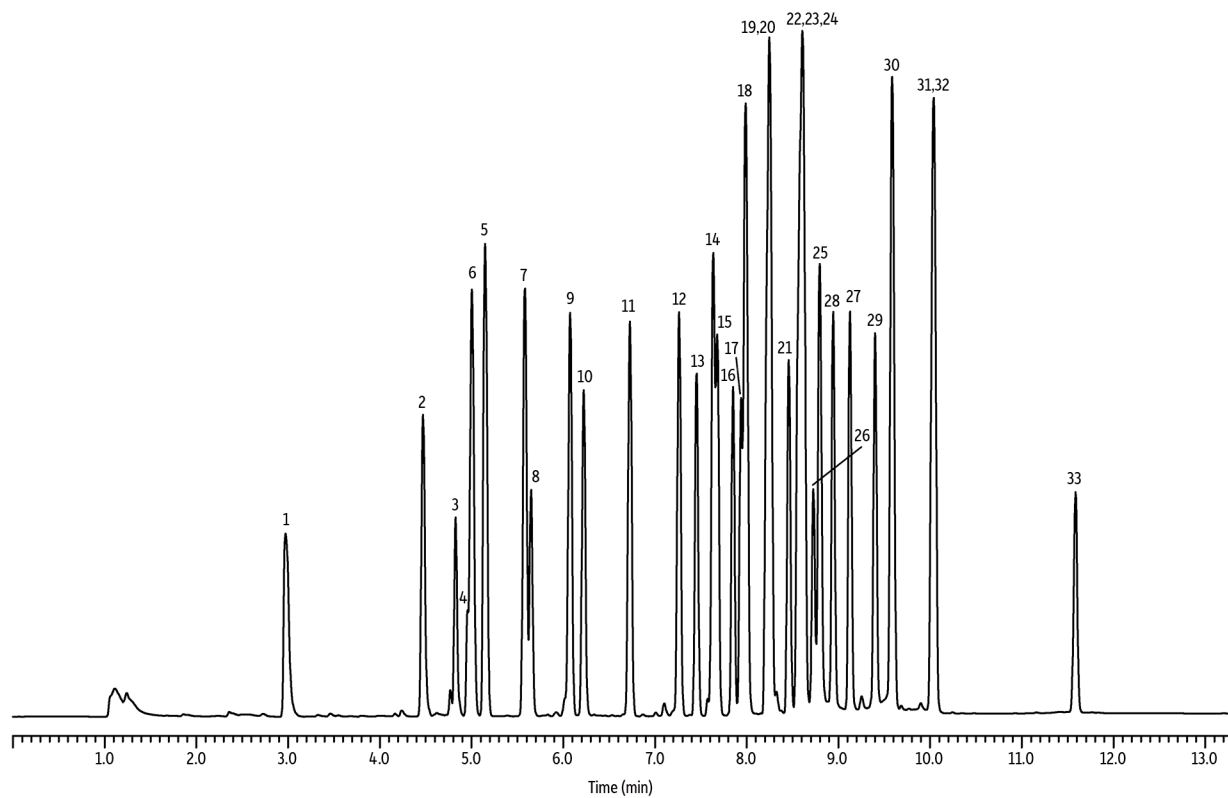


# Organochlorine Pesticides by U.S. EPA Method 8081A on Rtx-CLPesticides2 (dual column w/ Rtx-440)



GC\_EV00797

### Peaks

- |                              |                             |                        |
|------------------------------|-----------------------------|------------------------|
| 1. Hexachlorocyclopentadiene | 12. Isodrin                 | 23. 2,4'-DDT           |
| 2. 2,4,5,6-TCMX              | 13. Heptachlor epoxide      | 24. 4,4'-DDD           |
| 3. <i>cis</i> -Diallate      | 14. 2,4'-DDE                | 25. Endosulfan II      |
| 4. <i>trans</i> -Diallate    | 15. <i>trans</i> -Chlordane | 26. Kepone             |
| 5. $\alpha$ -BHC             | 16. <i>cis</i> -Chlordane   | 27. Endrin aldehyde    |
| 6. Hexachlorobenzene         | 17. Endosulfan I            | 28. 4,4'-DDT           |
| 7. $\gamma$ -BHC             | 18. 4,4'-DDE                | 29. Endosulfan sulfate |
| 8. $\beta$ -BHC              | 19. 2,4'-DDD                | 30. Methoxychlor       |
| 9. $\delta$ -BHC             | 20. Dieldrin                | 31. Endrin ketone      |
| 10. Heptachlor               | 21. Chlorobenzilate         | 32. Mirex              |
| 11. Aldrin                   | 22. Endrin                  | 33. DCB                |

**Column** Rtx-CLPesticides2 30 m, 0.32 mm ID, 0.50  $\mu$ m (cat.# 11325)  
**Standard/Sample** Organochlorine pesticide mix AB #2 (cat.# 32292)  
 Chlorobenzilate (cat.# 32211)  
 Diallate (*cis* & *trans*) (cat.# custom)  
 Hexachlorobenzene (cat.# 32231)  
 Hexachlorocyclopentadiene (cat.# 32232)  
 Isodrin (cat.# custom)  
 Kepone (cat.# custom)  
 Mirex (cat.# custom)  
 2,4'-DDD (cat.# 32098)  
 2,4'-DDE (cat.# 32099)  
 2,4'-DDT (cat.# 32200)  
 TCMX (cat.# 32027)  
 Decachlorobiphenyl (BZ #209) (cat.# 32029)

**Injection**  
 Inj. Vol.: 1.0  $\mu$ L splitless (hold 0.75 min)  
 Inj. Temp.: 275  $^{\circ}$ C  
**Oven**  
 Oven Temp.: 140  $^{\circ}$ C (hold 1 min) to 240  $^{\circ}$ C at 30  $^{\circ}$ C/min (hold 2 min) to 330  $^{\circ}$ C at 30  $^{\circ}$ C/min (hold 4 min)  
**Carrier Gas** H<sub>2</sub>, constant pressure  
 Linear Velocity: 51 cm/sec @ 140  $^{\circ}$ C  
**Detector** ECD @ 330  $^{\circ}$ C  
**Instrument** Shimadzu 2010 GC