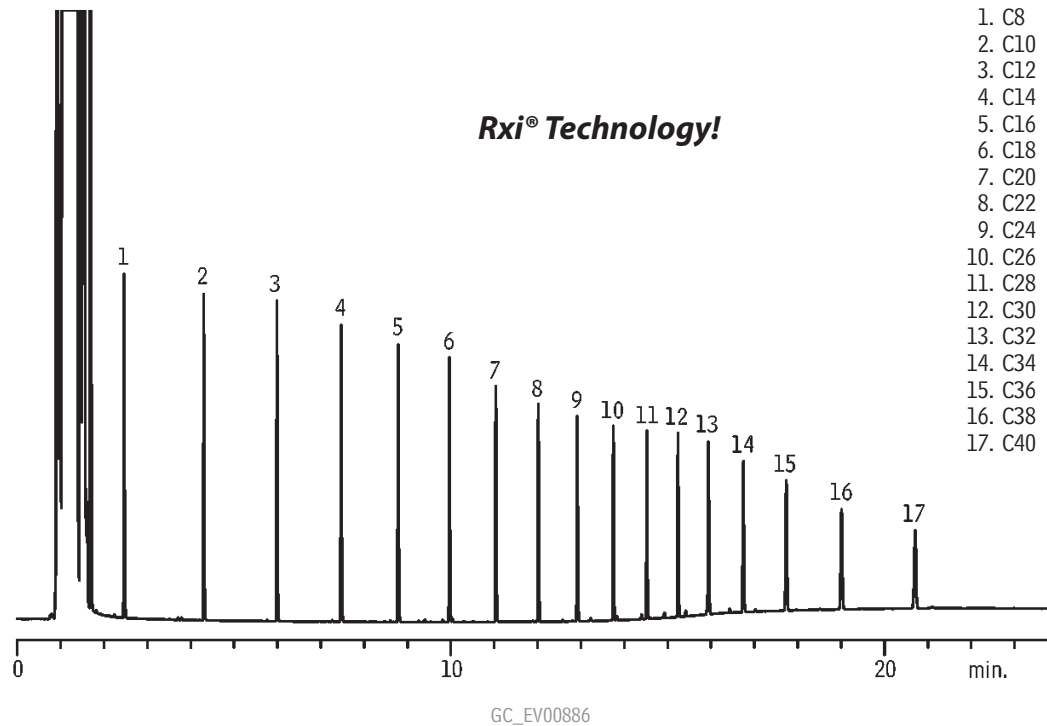


# Petroleum Hydrocarbons (TPH)

## Rxi®-1ms



Column: Rxi®-1ms, 20m, 0.18mm ID, 0.18 $\mu$ m (cat.# 13302)  
Sample: Florida TRPH Standard (cat.# 31266), 500 $\mu$ g/mL each component in hexane  
Inj.: 0.5 $\mu$ L, split, split ratio 20:1, 3.5mm Precision™ inlet liner (cat.# 21021)  
Instrument: Shimadzu GC-2010\*  
Inj. temp.: 275°C  
Carrier gas: hydrogen, constant pressure  
Linear velocity: 55cm/sec. @ 40°C  
Oven temp.: 40°C (hold 1 min.) to 330°C @ 20°C/min. (hold 10 min.)  
Det.: FID @ 350°C

\*GC courtesy of Shimadzu Scientific.

Restek Corporation 110 Benner Circle Bellefonte, PA 16823  
814-353-1300 • 800-356-1688 • Fax: 814-353-1309 • www.restek.com