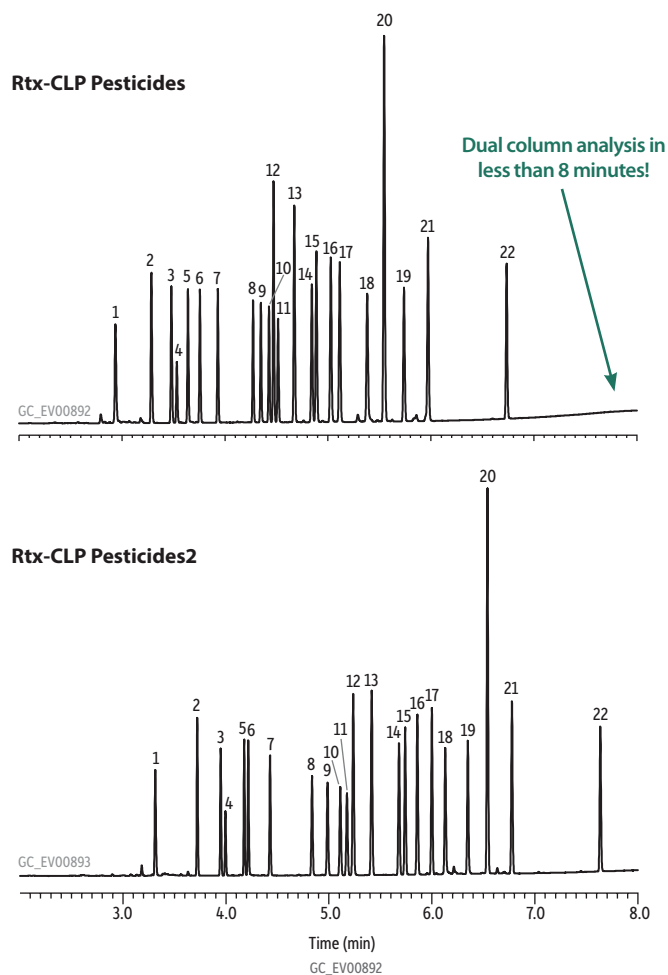


Organochlorine Pesticides on Rtx-CLPesticides Columns (0.18 mm ID column set)



Peaks

1. 2,4,5,6-Tetrachloro- <i>m</i> -xylene (SS)	7. Aldrin	13. Dieldrin	18. Endrin aldehyde
2. α -BHC	8. Heptachlor epoxide	14. Endrin	19. Endosulfan sulfate
3. γ -BHC	9. <i>trans</i> -Chlordane	15. 4,4'-DDD	20. Methoxychlor
4. β -BHC	10. <i>cis</i> -Chlordane	16. Endosulfan II	21. Endrin ketone
5. δ -BHC	11. Endosulfan I	17. 4,4'-DDT	22. Decachlorobiphenyl (SS)
6. Heptachlor	12. 4,4'-DDE		

Column	Rtx-CLPesticides 20 m, 0.18 mm ID, 0.18 μ m (cat.# 42102) and Rtx-CLPesticides2 20 m, 0.18 mm ID, 0.14 μ m (cat.# 42302) using IP deactivated guard column 5 m, 0.53 mm ID (cat.# 10045) with SeCure "Y" connector kit with universal "Y" Press-Tight connector (cat.# 20276)
Standard/Sample	Organochlorine pesticide mix AB #2 (cat.# 32292) Pesticide surrogate mix, EPA 8080, 8081 (cat.# 32000)
Injection	
Inj. Vol.:	0.5 μ L splitless (hold 0.75 min)
Liner:	Splitless taper (2 mm) (cat.# 20796)
Inj. Temp.:	250 $^{\circ}$ C
Oven	
Oven Temp.:	140 $^{\circ}$ C (hold 1 min) to 250 $^{\circ}$ C at 35 $^{\circ}$ C/min (hold 1 min) to 330 $^{\circ}$ C at 35 $^{\circ}$ C/min (hold 3 min)
Carrier Gas	He, constant linear velocity
Linear Velocity:	20 cm/sec @ 140 $^{\circ}$ C
Detector	Micro-ECD @ 350 $^{\circ}$ C
Instrument	Agilent/HP6890 GC
Notes	cat.# 32292 = 8-80 μ g/mL each component in hexane/toluene cat.# 32000 = 200 μ g/mL each component in acetone

This chromatogram was obtained using an Agilent micro-ECD. To obtain comparable results, you will need to employ a micro-ECD in addition to confirmational dual columns connected to a 5-meter guard column using a "Y" Press-Tight connector.