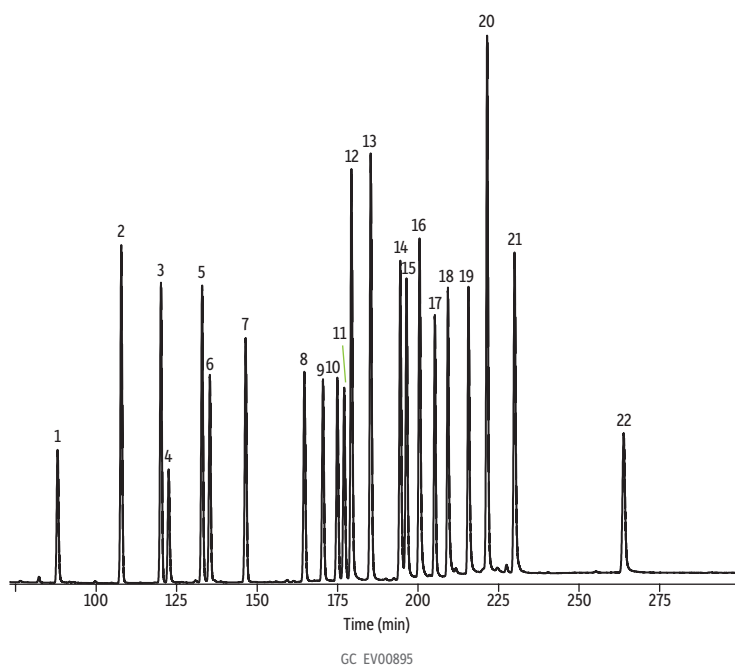


Organochlorine Pesticides on Rtx-CLPesticides2



Peaks

1. 2,4,5,6-Tetrachloro- <i>m</i> -xylene (SS)	12. 4,4'-DDE
2. α -BHC	13. Dieldrin
3. γ -BHC	14. Endrin
4. β -BHC	15. 4,4'-DDD
5. δ -BHC	16. Endosulfan II
6. Heptachlor	17. 4,4'-DDT
7. Aldrin	18. Endrin aldehyde
8. Heptachlor epoxide	19. Endosulfan sulfate
9. <i>trans</i> -Chlordane	20. Methoxychlor
10. <i>cis</i> -Chlordane	21. Endrin ketone
11. Endosulfan I	22. Decachlorobiphenyl (SS)

Column Rtx-CLPesticides2, 20 m, 0.18 mm ID, 0.14 μ m (cat.# 42302)
Standard/Sample Organochlorine pesticide mix AB #2 (8-80 μ g/mL each component in hexane/toluene 1:1) (cat.# 32292)
 Pesticide surrogate mix, EPA 8080, 8081 (200 μ g/mL each component in acetone) (cat.# 32000)

Injection
 Inj. Vol.: 1.0 μ L split (split ratio 20:1)
 Liner: Siltek gooseneck splitless (4 mm) (cat.# 20799-214)
 Inj. Temp.: 250 $^{\circ}$ C

Oven
 Oven Temp.: 275 $^{\circ}$ C

Carrier Gas He, constant flow

Flow Rate: 1.5 mL/min

Detector ECD @ 250 $^{\circ}$ C

Notes

Column Heater: Gerstel Modular Accelerated Column Heater
Gerstel module temp.: 140 $^{\circ}$ C to 220 $^{\circ}$ C (hold 1 min) @ 120 $^{\circ}$ C/min, to 305 $^{\circ}$ C @ 50 $^{\circ}$ C/min, to 330 $^{\circ}$ C @ 300 $^{\circ}$ C/min (hold 2 min)

This chromatogram was obtained using an Agilent micro-ECD. To obtain comparable results, you will need to employ a micro-ECD in addition to confirmational dual-columns connected to a 5-meter guard column using a "Y" Press-Tight connector.