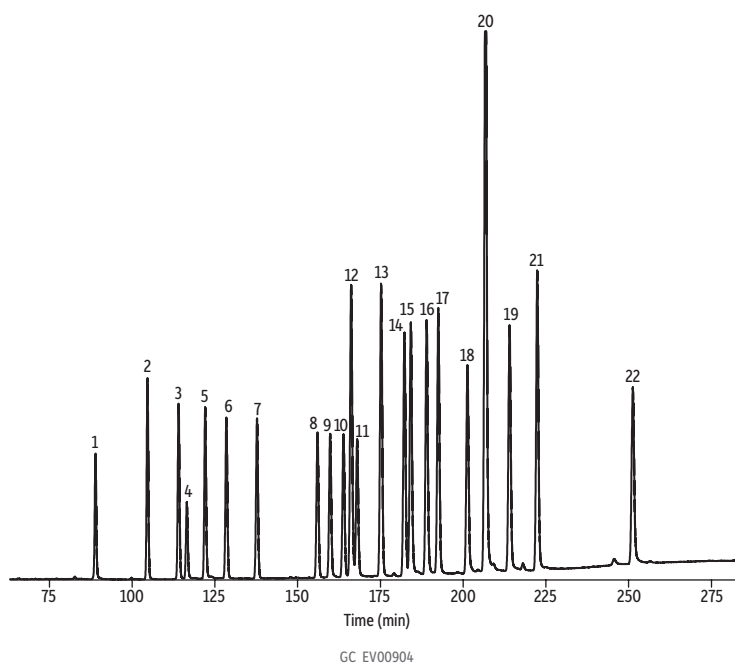


Organochlorine Pesticides on Rtx-CLPesticides



Peaks

- | | |
|---|-----------------------------|
| 1. 2,4,5,6-Tetrachloro- <i>m</i> -xylene (SS) | 12. 4,4'-DDE |
| 2. α -BHC | 13. Dieldrin |
| 3. γ -BHC | 14. Endrin |
| 4. β -BHC | 15. 4,4'-DDD |
| 5. δ -BHC | 16. Endosulfan II |
| 6. Heptachlor | 17. 4,4'-DDT |
| 7. Aldrin | 18. Endrin aldehyde |
| 8. Heptachlor epoxide | 19. Endosulfan sulfate |
| 9. <i>trans</i> -Chlordane | 20. Methoxychlor |
| 10. <i>cis</i> -Chlordane | 21. Endrin ketone |
| 11. Endosulfan I | 22. Decachlorobiphenyl (SS) |

Column Rtx-CLPesticides, 20 m, 0.18 mm ID, 0.18 μ m (cat.# 42102)
Standard/Sample Organochlorine pesticide mix AB #2 (8-80 μ g/mL each component in hexane/toluene 1:1) (cat.# 32292)
 Pesticide surrogate mix, EPA 8080, 8081 (200 μ g/mL each component in acetone) (cat.# 32000)

Injection
 Inj. Vol.: 0.5 μ L split (split ratio 20:1)
 Liner: Gooseneck splitless (2 mm) (cat.# 20796)
 Inj. Temp.: 250 $^{\circ}$ C

Oven
 Oven Temp.: 275 $^{\circ}$ C

Carrier Gas He, constant flow

Flow Rate: 1.5 mL/min

Detector ECD @ 325 $^{\circ}$ C

Notes **Column Heater:** Gerstel Modular Accelerated Column Heater
Gerstel module temp.: 150 $^{\circ}$ C (hold 10 sec) to 190 $^{\circ}$ C (hold 0.5 min) @ 300 $^{\circ}$ C/min, to 320 $^{\circ}$ C @ 40 $^{\circ}$ C/min (hold 2 min)

This chromatogram was obtained using an Agilent micro-ECD. To obtain comparable results, you will need to employ a micro-ECD in addition to confirmational dual-columns connected to a 5-meter guard column using a "Y" Press-Tight connector.