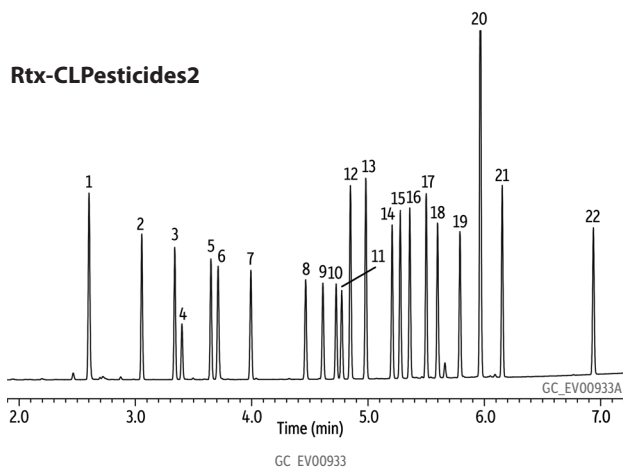
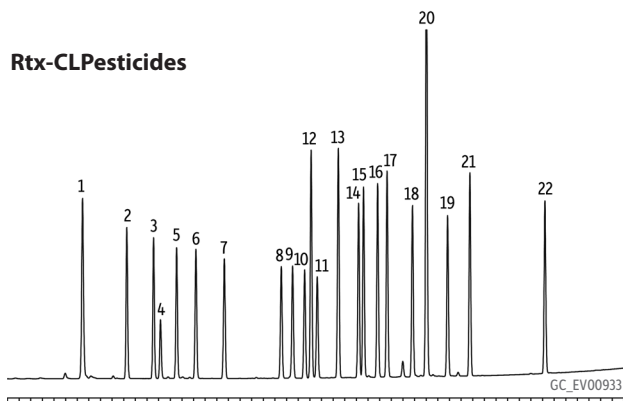


# Organochlorine Pesticide Mix AB #2 on Rtx-CLPesticides2 and Rtx-CLPesticides (0.32 mm ID column set)



### Peaks

|   |                                  |                   |                             |
|---|----------------------------------|-------------------|-----------------------------|
| 1. 2,4,5,6-Tetrachloro- <i>m</i> -xylene (SS) | 6. Heptachlor                    | 11. Endosulfan I  | 17. 4,4'-DDT                |
| 2. $\alpha$ -BHC                              | 7. Aldrin                        | 12. 4,4'-DDE      | 18. Endrin aldehyde         |
| 3. $\gamma$ -BHC                              | 8. Heptachlor epoxide (isomer B) | 13. Dieldrin      | 19. Endosulfan sulfate      |
| 4. $\beta$ -BHC                               | 9. <i>trans</i> -Chlordane       | 14. Endrin        | 20. Methoxychlor            |
| 5. $\delta$ -BHC                              | 10. <i>cis</i> -Chlordane        | 15. 4,4'-DDD      | 21. Endrin ketone           |
|   |                                  | 16. Endosulfan II | 22. Decachlorobiphenyl (SS) |

**Column** Rtx-CLPesticides 30 m, 0.32 mm ID, 0.32  $\mu$ m (cat.# 11141) and Rtx-CLPesticides2 30 m, 0.32 mm ID, 0.25  $\mu$ m (cat.# 11324) using Rxi guard column 5 m, 0.32 mm ID (cat.# 10039) with deactivated universal "Y" Press-Tight connector (cat.# 20405-261)

**Standard/Sample** Organochlorine pesticide mix AB #2 (cat.# 32292)  
Pesticide surrogate mix, EPA 8080, 8081 (cat.# 32000)

### Injection

Inj. Vol.: 1  $\mu$ L splitless (hold 0.3 min)  
Liner: Splitless taper (4 mm) (cat.# 20799)  
Inj. Temp.: 250 °C

### Oven

Oven Temp.: 120 °C to 200 °C at 45 °C/min to 230 °C at 15 °C/min to 330 °C at 30 °C/min (hold 2 min)

### Carrier Gas

He

### Detector

Micro-ECD @ 330 °C

### Notes

Instrument was operated in constant flow mode.

Linear velocity: 60 cm/sec @ 120 °C.

This chromatogram was obtained using an Agilent micro-ECD. To obtain comparable results, you will need to employ a micro-ECD in addition to dual columns connected to a 5-meter guard column using a "Y" Press-Tight connector.