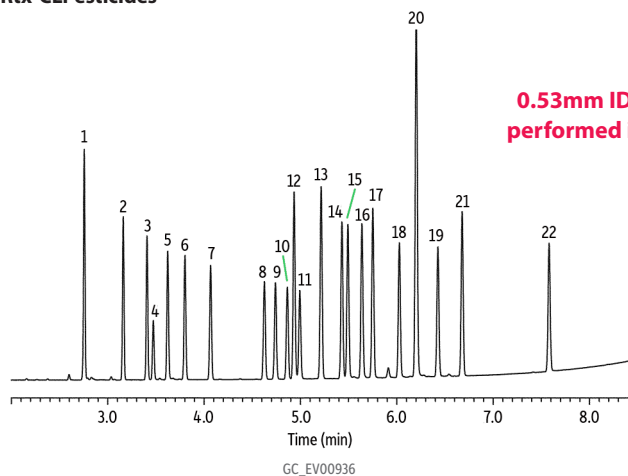
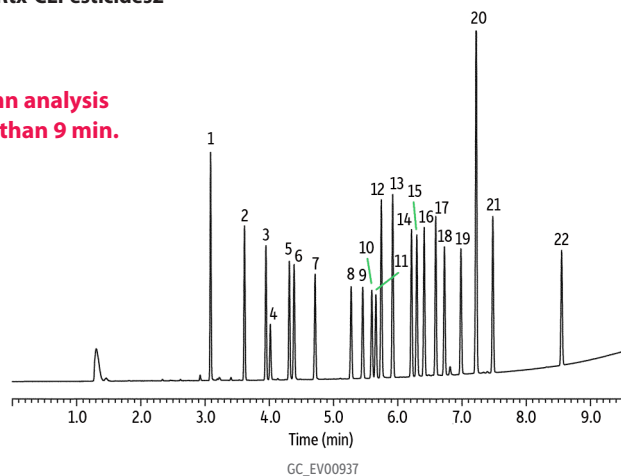


**Organochlorine Pesticide Mix AB #2 on Rtx-CLPesticides2 and Rtx-CLPesticides
(0.53 mm ID column set)**

Rtx-CLPesticides



Rtx-CLPesticides2



Peaks

- | | |
|---|-----------------------------|
| 1. 2,4,5,6-Tetrachloro- <i>m</i> -xylene (SS) | 12. 4,4'-DDE |
| 2. α -BHC | 13. Dieldrin |
| 3. γ -BHC | 14. Endrin |
| 4. β -BHC | 15. 4,4'-DDD |
| 5. δ -BHC | 16. Endosulfan II |
| 6. Heptachlor | 17. 4,4'-DDT |
| 7. Aldrin | 18. Endrin aldehyde |
| 8. Heptachlor epoxide (isomer B) | 19. Endosulfan sulfate |
| 9. <i>trans</i> -Chlordane | 20. Methoxychlor |
| 10. <i>cis</i> -Chlordane | 21. Endrin ketone |
| 11. Endosulfan I | 22. Decachlorobiphenyl (SS) |

Column Rtx-CLPesticides 30 m, 0.53 mm ID, 0.50 μ m (cat.# 11140)
and Rtx-CLPesticides2 30 m, 0.53 mm ID, 0.42 μ m (cat.# 11340)
using Rxi guard column 5 m, 0.53 mm ID (cat.# 10054)
with Siltek-treated universal "Y" Press-Tight connector (cat.# 20486)

Standard/Sample Organochlorine pesticide mix AB #2 (cat.# 32292)
Pesticide surrogate mix, EPA 8080, 8081 (cat.# 32000)

Injection

Inj. Vol.: 1 μ L splitless (hold 0.3 min)
Liner: Splitless taper (4 mm) (cat.# 20799)
Inj. Temp.: 250 °C

Oven

Oven Temp.: 120 °C to 200 °C at 45 °C/min to 230 °C at 12.5 °C/min to 325 °C at 30 °C/min (hold 2 min)

Carrier Gas He, constant linear velocity

Linear Velocity: 45 cm/sec @ 120 °C

Detector μ -ECD @ 330 °C

Notes

This chromatogram was obtained using an Agilent μ -ECD. To obtain comparable results, you will need to employ a μ -ECD in addition to dual columns connected to a 5-meter guard column using a "Y" Press-Tight connector.