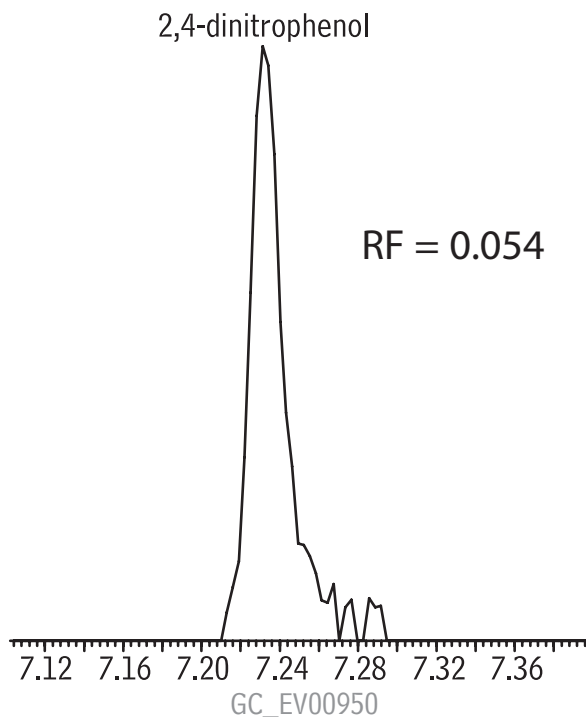


# 2,4-dinitrophenol

## Rxi<sup>®</sup>-5Sil MS



Column: Rxi<sup>®</sup>-5Sil MS, 20m, 0.18mm ID, 0.18 $\mu$ m (cat.# 43602)  
Sample: US EPA Method 8270D Mix, 1 $\mu$ L of 1 $\mu$ g/mL (IS 40 $\mu$ g/mL)  
8270 MegaMix<sup>®</sup> (cat.# 31850)  
Benzoic Acid (cat.# 31879)  
8270 Benzidines Mix (cat.# 31852)  
Acid Surrogate Mix (4/89 SOW) (cat.# 31025)  
Revised B/N Surrogate Mix (cat.# 31887)  
1,4-Dioxane (cat.# 31853)  
SV Internal Standard Mix (cat.# 31206)  
Inj.: 1.0 $\mu$ L (1ng on-column concentration),  
4mm Drilled Uniliner<sup>®</sup> (hole near bottom) inlet liner (cat.# 20756),  
pulsed splitless: pulse 20psi @ 0.2 min., 60mL/min. @ 0.15 min.  
Inj. temp.: 250 $^{\circ}$ C  
Carrier gas: helium, constant flow  
Flow rate: 1.0mL/min.  
Oven temp.: 50 $^{\circ}$ C (hold 0.5 min.) to 260 $^{\circ}$ C @ 20 $^{\circ}$ C/min. to 280 $^{\circ}$ C @ 5 $^{\circ}$ C/min.  
to 330 $^{\circ}$ C @ 20 $^{\circ}$ C/min. (hold 1.0 min.)  
Det.: MS  
Transfer line temp: 280 $^{\circ}$ C  
Scan range: 35-550amu  
Ionization: EI  
Mode: scan