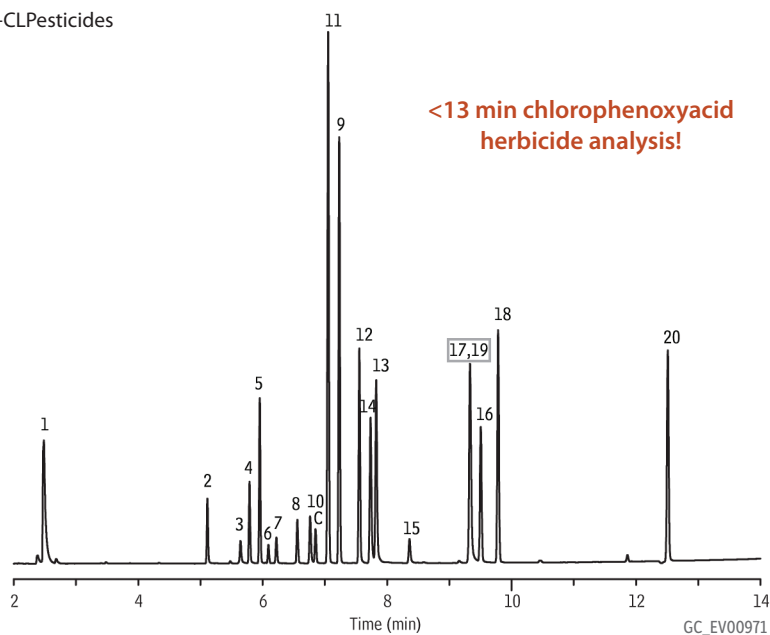


Herbicides on Rtx®-CLPesticides & Rtx®-CLPesticides2

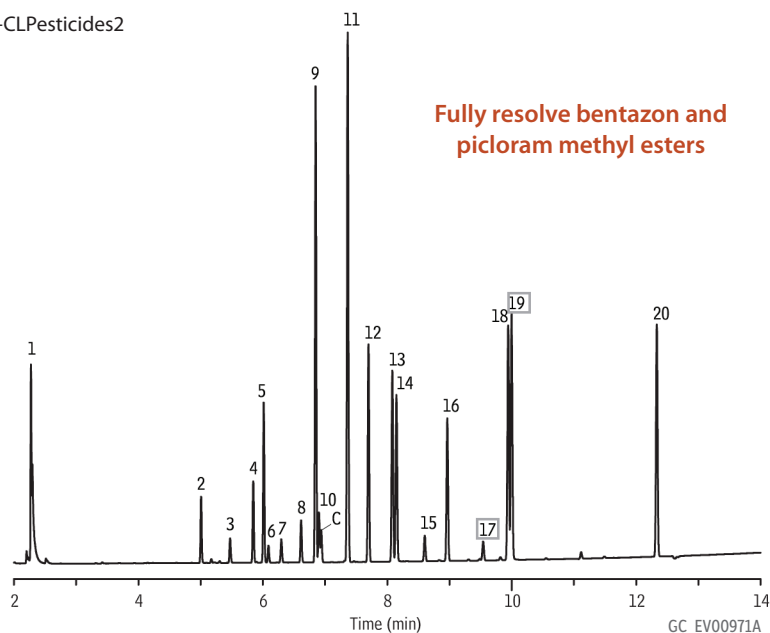
Rtx®-CLPesticides



Peaks

1. Dalapon methyl ester
2. 3,5-Dichlorobenzoic acid methyl ester (SS)
3. 4-Nitroanisole
4. DCAA methyl ester (SS)
5. Dicamba methyl ester
6. MCPP methyl ester
7. MCPA Methyl ester
8. Dichlorprop, methyl ester
9. 4,4'-DBOB (IS)
10. 2,4-D methyl ester
11. Pentachloroanisole
12. 2,4,5-TP, methyl ester
13. 2,4,5-T methyl ester
14. Chloramben, methyl ester
15. 2,4-DB methyl ester
16. Dinoseb methyl ester
17. Bentazon methyl ester
18. DCPA methyl ester (Chlorthal-dimethyl)
19. Pichloram methyl ester
20. Acifluorfen methyl ester
- C. contaminant

Rtx®-CLPesticides2



Columns	Rtx®-CLPesticides2 30 m, 0.32 mm ID, 0.25 µm (cat.# 11324) and Rtx®-CLPesticides 30 m, 0.32 mm ID, 0.32 µm (cat.# 11141) using Rxi® deactivated guard column 5 m, 0.32 mm ID (cat.# 10039) with universal "Y" Press-Tight® connector (cat.# 20405-261)
Sample	200 ng/mL herbicide mix #1 (cat.# 32055) 1,000 ng/mL dalapon methyl ester (cat.# 32057) 20,000 ng/mL herbicide mix #3 (cat.# 32059) 200 ng/mL herbicide mix #4 (cat.# 32062) 250 ng/mL 4,4'-dibromooctafluorobiphenyl (cat.# 32053) 400 ng/mL 2,4-dichlorophenyl acetic acid methyl ester (cat.# 32050)
Diluent:	Hexane
Injection	1.0 µL splitless (hold 0.75 min)
Inj. Vol.:	Cyclo double taper (4 mm) (cat.# 20895)
Inj. Temp.:	250 °C
Oven	70 °C (hold 0.5 min) to 190 °C at 25 °C/min (hold 1 min) to 300 °C at 11 °C/min (hold 5 min)
Carrier Gas	He, constant pressure
Linear Velocity:	36 cm/sec @ 70 °C
Detector	µ-ECD @ 325 °C
Instrument	Agilent/HP6890 GC
Notes	This chromatogram was obtained using an Agilent µ-ECD. To obtain comparable results, you will need to employ a µ-ECD in addition to confirmational dual columns connected to a 5-meter guard column using a "Y" Press-Tight® connector.