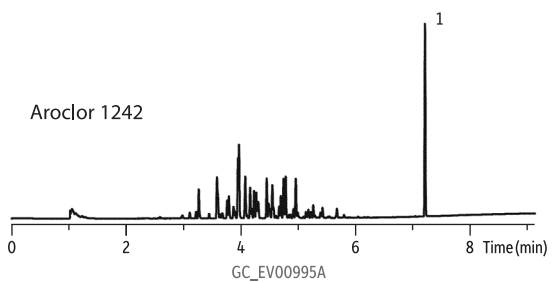
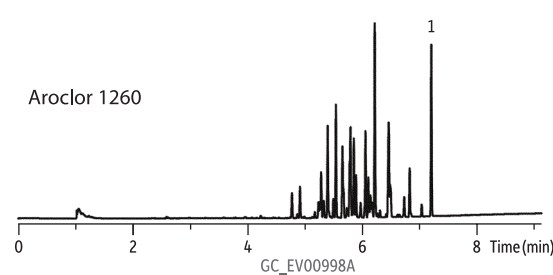
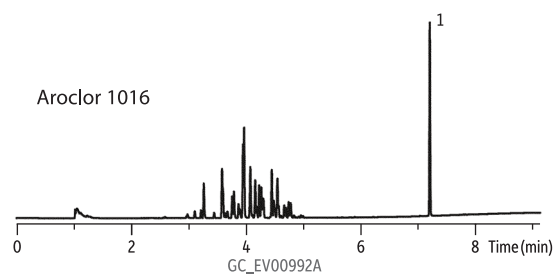
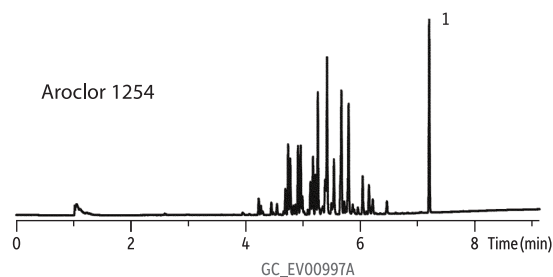
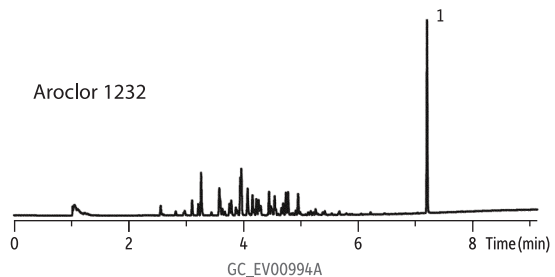
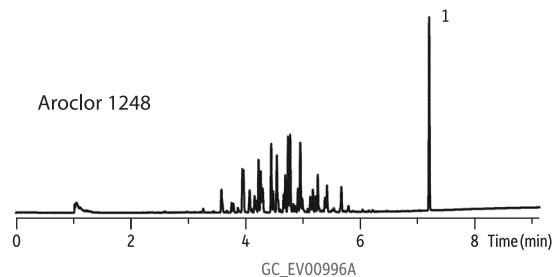
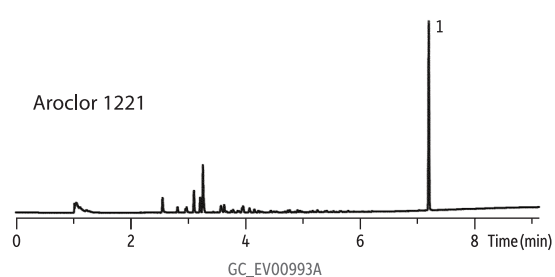


Aroclor PCBs on Rtx-CLPesticides2

Peaks

1. Decachlorobiphenyl (DCB)



Column Rtx-CLPesticides2, 30 m, 0.32 mm ID, 0.25 μ m (cat.# 11324)
Sample PCB kit #1 diluted to 1,000 ppb in hexane (cat.# 32089)
 Decachlorobiphenyl (BZ #209) diluted to 100 ppb in acetone (cat.# 32029)

Injection
 Inj. Vol.: 1.0 μ L pulsed splitless (hold 0.3 min)
 Liner: Cyclo double taper (4 mm) (cat.# 20895)
 Inj. Temp.: 250 °C
 Pulse Pressure: 30 psi (206.8 kPa)

Oven
 Oven Temp: 120 °C to 200 °C at 45 °C/min to 230 °C at 15 °C/min to 330 °C at 30 °C/min (hold 2 min)

Carrier Gas
 Linear Velocity: He, constant flow
 60 cm/sec

Detector
 μ -ECD @ 330 °C

Notes
 This chromatogram was obtained using an Agilent μ -ECD. To obtain comparable results, you will need to employ a μ -ECD in addition to confirmational dual columns connected to a 5-meter guard column using a "Y" Press-Tight connector.