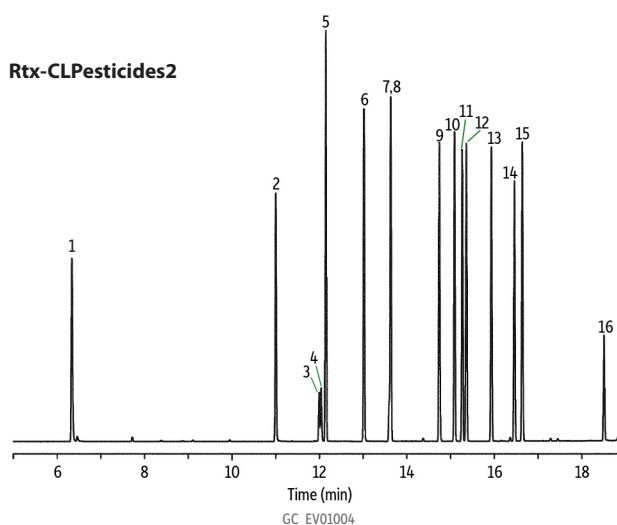
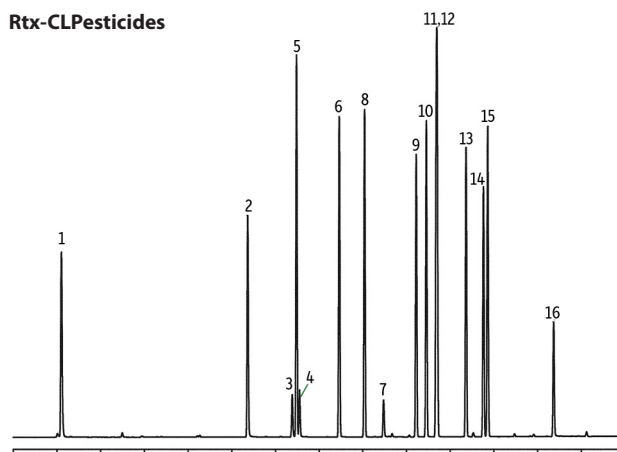


# Pesticides of U.S. EPA Method 505 on Rtx-CLPesticides and Rtx-CLPesticides2



Peaks			
1. Hexachlorocyclopentadiene	5. $\gamma$ -BHC	9. Heptachlor epoxide	13. Dieldrin
2. Hexachlorobenzene	6. Heptachlor	10. <i>trans</i> -Chlordane	14. Endrin
3. Simazine	7. Alachlor	11. <i>trans</i> -Nonachlor	15. <i>cis</i> -Nonachlor
4. Atrazine	8. Aldrin	12. <i>cis</i> -Chlordane	16. Methoxychlor

**Column** Rtx-CLPesticides 30 m, 0.32 mm ID, 0.32  $\mu$ m (cat.# 11141)  
and Rtx-CLPesticides2 30 m, 0.32 mm ID, 0.25  $\mu$ m (cat.# 11324)  
using Rxi guard column 5 m, 0.32 mm ID (cat.# 10039)  
with deactivated universal "Y" Press-Tight connector (cat.# 20405-261)

**Standard/Sample** 200 ng/mL 505 organohalide pesticide mix (cat.# 32024)  
4.2  $\mu$ g/mL simazine (cat.# 32236)  
4.2  $\mu$ g/mL atrazine (cat.# 32208)

Diluent: Methanol

**Injection**

Inj. Vol.: 2  $\mu$ L splitless (hold 0.75 min)  
Liner: Cyclo double taper (4 mm) (cat.# 20896)  
Inj. Temp.: 250 °C

**Oven**

Oven Temp.: 90 °C (hold 1 min) to 310 °C at 10 °C/min (hold 5 min)

**Carrier Gas** He, constant flow

Linear Velocity: 40 cm/sec

**Detector** Micro-ECD @ 325 °C

**Instrument** Agilent/HP6890 GC

**Notes**

This chromatogram was obtained using an Agilent micro-ECD. To obtain comparable results, you will need to employ a micro-ECD in addition to confirmational dual columns connected to a 5-meter guard column using a "Y" Press-Tight connector.