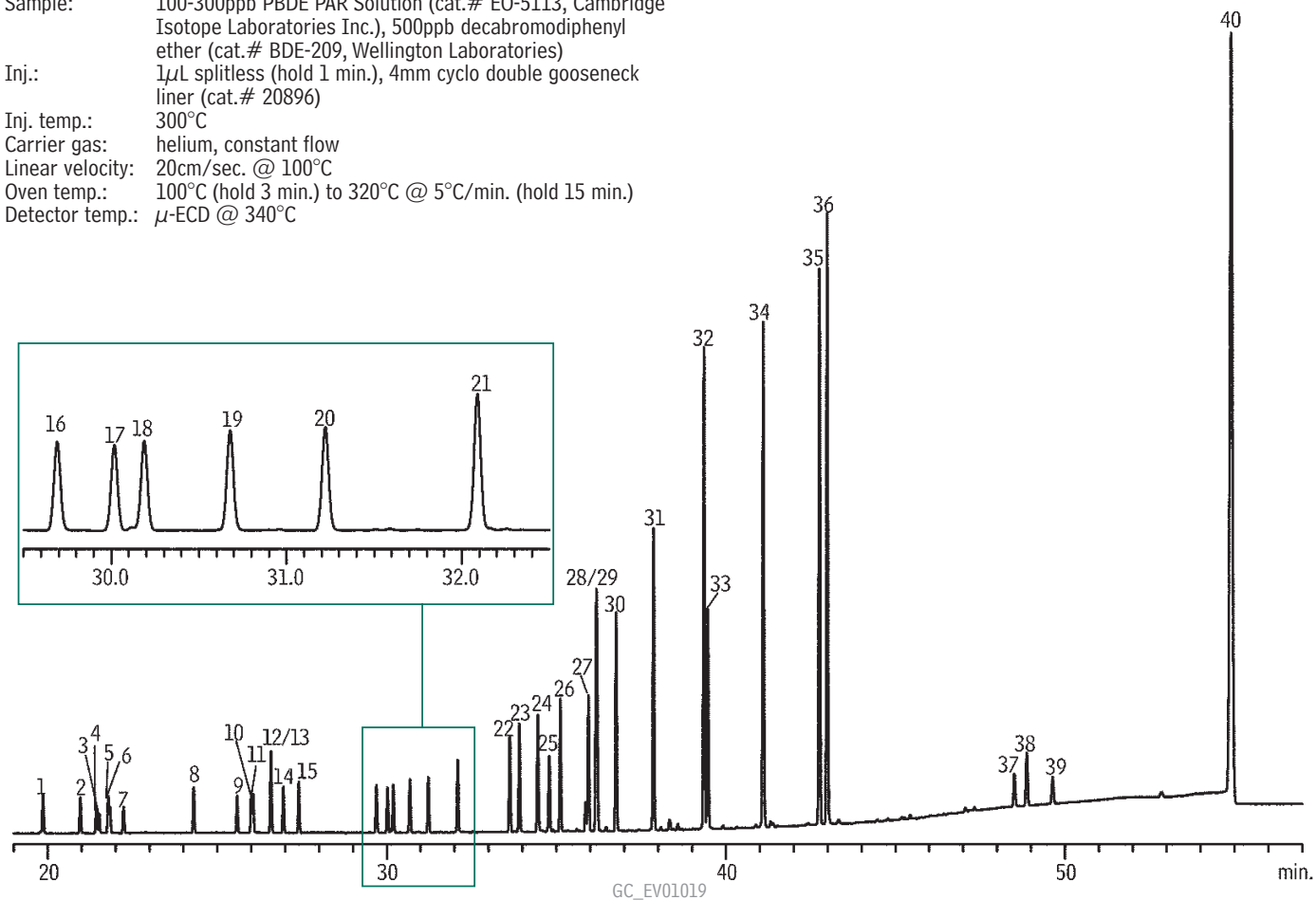


Brominated Flame Retardants

Rtx®-1614

Column: Rtx®-1614, 30m, 0.25mm ID, 0.10µm (cat.# 10295)
 Sample: 100-300ppb PBDE PAR Solution (cat.# EO-5113, Cambridge Isotope Laboratories Inc.), 500ppb decabromodiphenyl ether (cat.# BDE-209, Wellington Laboratories)
 Inj.: 1µL splitless (hold 1 min.), 4mm cyclo double gooseneck liner (cat.# 20896)
 Inj. temp.: 300°C
 Carrier gas: helium, constant flow
 Linear velocity: 20cm/sec. @ 100°C
 Oven temp.: 100°C (hold 3 min.) to 320°C @ 5°C/min. (hold 15 min.)
 Detector temp.: µ-ECD @ 340°C



1. BDE-10
2. BDE-7
3. BDE-8
4. BDE-11
5. BDE-12
6. BDE-13
7. BDE-15
8. BDE-30
9. BDE-32
10. BDE-17
11. BDE-25
12. BDE-28
13. BDE-33
14. BDE-35
15. BDE-37
16. BDE-75
17. BDE-49
18. BDE-71
19. BDE-47
20. BDE-66
21. BDE-77
22. BDE-100
23. BDE-119
24. BDE-99
25. BDE-116
26. BDE-118
27. BDE-85
28. BDE-155
29. BDE-126
30. BDE-154
31. BDE-153
32. BDE-138
33. BDE-166
34. BDE-183
35. BDE-181
36. BDE-190
37. BDE-208
38. BDE-207
39. BDE-206
40. BDE-209