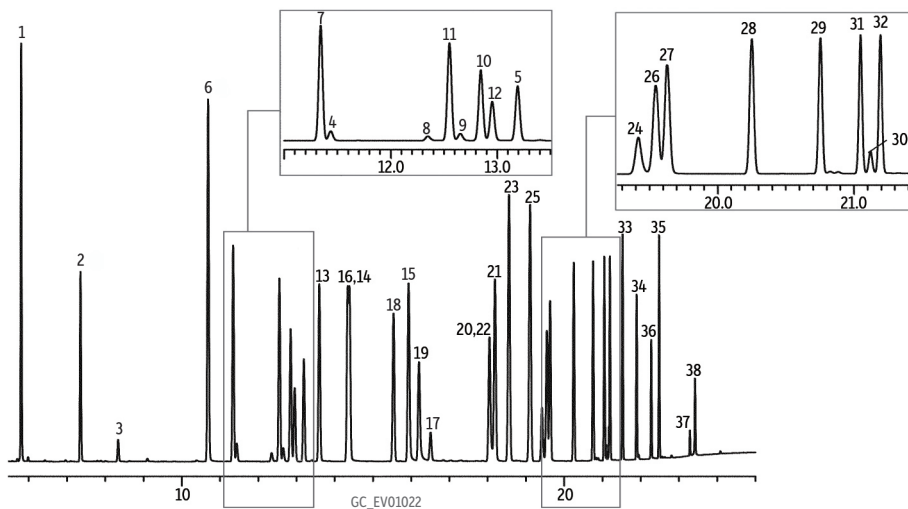
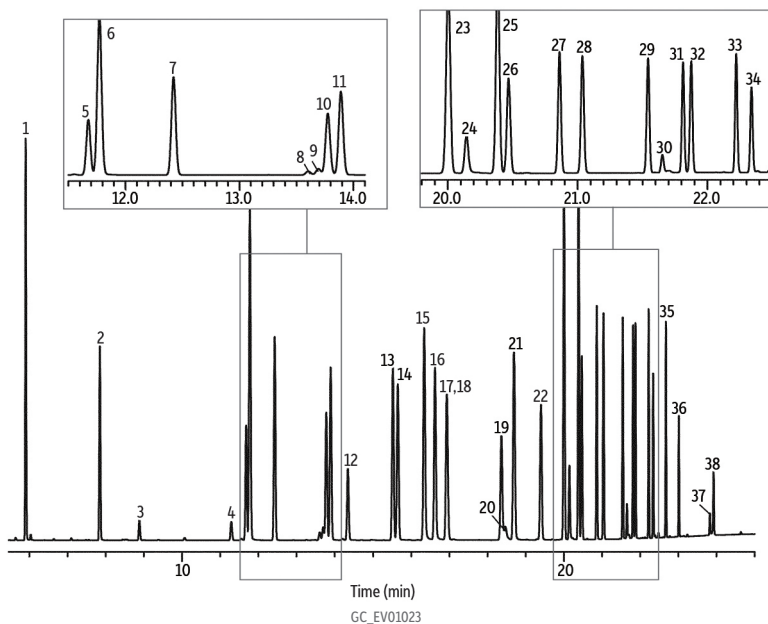


Pesticides & Herbicides U.S. EPA Method 508.1 Rtx-CLPesticides & Rtx-CLPesticides2

Rtx-CLPesticides



Rtx-CLPesticides2



Peaks

1. Hexachlorocyclopentadiene	7. α -BHC	13. δ -BHC	19. 4,4'-Dibromobiphenyl (SS)	24. Cyanazine	30. Chlorobenzilate	35. Endosulfan sulfate
2. Etridiazole	8. Simazine	14. Heptachlor	20. Metolachlor	25. <i>cis</i> -Chlordane	31. 4,4'-DDD	36. Methoxychlor
3. Chlorneb	9. Atrazine	15. Chlorothalonil	21. DCPA methyl ester (Chlorthal-dimethyl)	26. Endosulfan I	32. Endosulfan II	37. <i>cis</i> -Permethrin
4. Propachlor	10. Pentachloronitrobenzene (IS)	16. Metribuzin	22. Heptachlor epoxide	27. 4,4'-DDE	33. 4,4'-DDT	38. <i>trans</i> -Permethrin
5. Trifluralin	11. γ -BHC	17. Alachlor	23. <i>trans</i> -Chlordane	28. Dieldrin	34. Endrin aldehyde	
6. Hexachlorobenzene	12. β -BHC	18. Aldrin		29. Endrin		

Column

Rtx-CLPesticides2 30 m, 0.32 mm ID, 0.25 μ m (cat.# 11324)
and Rtx-CLPesticides 30 m, 0.32 mm ID, 0.32 μ m (cat.# 11141)
using Rxi guard column 5 m, 0.32 mm ID (cat.# 10039)
with deactivated universal "Y" Press-Tight connector (cat.# 20405-261)

Standard/Sample

50 ng/mL 508.1 calibration mix #1 (cat.# 32094)
100 ng/mL 508.1 calibration mix #2 (cat.# 32095)
100 ng/mL 508.1 calibration mix #3 (cat.# 32096)
50 ng/mL pentachloronitrobenzene (cat.# 32091)
250 ng/mL 4,4'-dibromobiphenyl (cat.# 32092)
500 ng/mL atrazine (cat.# 32208)
500 ng/mL simazine (cat.# 32236)

Diluent:

Ethyl acetate

Injection

Inj. Vol.: 2 μ L splitless (hold 0.75 min)
Liner: Cyclo double taper (4 mm) (cat.# 20896)
Inj. Temp.: 250 $^{\circ}$ C

Oven

Oven Temp.: 80 $^{\circ}$ C (hold 0.5 min) to 155 $^{\circ}$ C at 19 $^{\circ}$ C/min (hold 1 min) to 210 $^{\circ}$ C at 4 $^{\circ}$ C/min to 310 $^{\circ}$ C at 25 $^{\circ}$ C/min (hold 0.5 min)

Carrier Gas

He, constant flow

Linear Velocity:

26 cm/sec

Detector

Notes

Micro-ECD @ 325 $^{\circ}$ C

This chromatogram was obtained using an Agilent micro-ECD. To obtain comparable results, you will need to employ a micro-ECD in addition to confirmational dual columns connected to a 5-meter guard column using a "Y" Press-Tight connector.