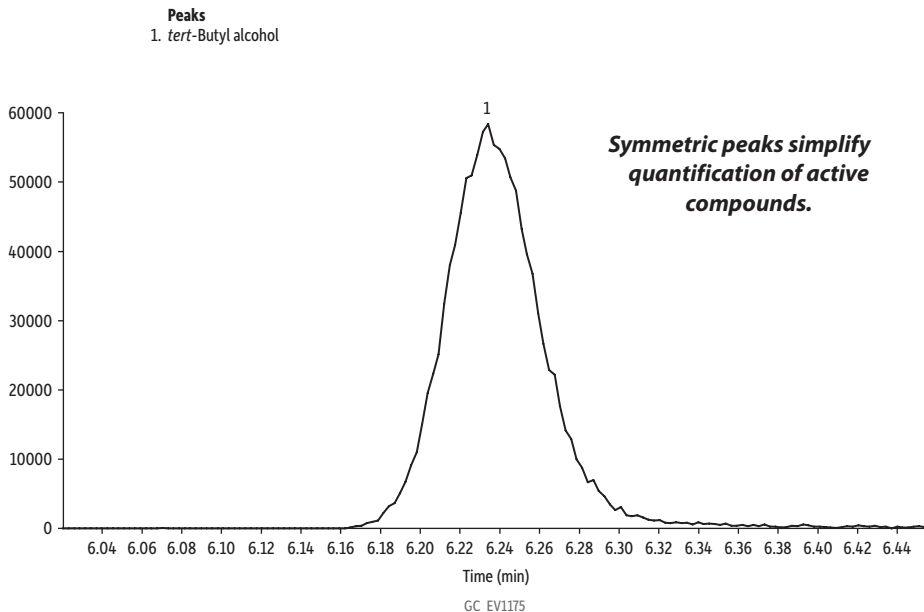


## tert-Butyl Alcohol Peak Shape on Rxi-624Sil MS (30 m, 0.25 mm ID, 1.40 µm)



<b>Column</b>	Rxi-624Sil MS, 30 m, 0.25 mm ID, 1.40 µm (cat.# 13868)
<b>Sample</b>	
<b>Conc.:</b>	25 ppb in RO water
<b>Injection</b>	purge and trap split (split ratio 30:1)
<b>Inj. Temp.:</b>	225 °C
<b>Purge and Trap</b>	
<b>Instrument:</b>	OI Analytical 4660
<b>Trap Type:</b>	10 Trap
<b>Purge:</b>	11 min @ 20 °C
<b>Desorb</b>	
<b>Preheat Temp.:</b>	180 °C
<b>Desorb:</b>	0.5 min @ 190 °C
<b>Bake:</b>	5 min @ 210 °C
<b>Interface</b>	
<b>Connection:</b>	injection port
<b>Oven</b>	
<b>Oven Temp.:</b>	35 °C (hold 5 min) to 60 °C at 11 °C/min to 220 °C at 20 °C/min (hold 2 min)
<b>Carrier Gas</b>	He, constant flow
<b>Flow Rate:</b>	1.0 mL/min
<b>Detector</b>	MS
<b>Mode:</b>	Scan
<b>Transfer</b>	
<b>Line Temp.:</b>	230 °C
<b>Analyzer Type:</b>	Quadrupole
<b>Source Temp.:</b>	230 °C
<b>Quad Temp.:</b>	150 °C
<b>Electron Energy:</b>	70 eV
<b>Solvent</b>	
<b>Delay Time:</b>	1.5 min
<b>Tune Type:</b>	BFB
<b>Ionization Mode:</b>	El
<b>Scan Range:</b>	36-260 amu
<b>Instrument</b>	Agilent 7890A GC & 5975C MSD
<b>Notes</b>	Other Purge and Trap Conditions: Sample Inlet: 40 °C Sample: 40 °C Water Management: Purge 110 °C, Desorb 0 °C, Bake, 240 °C