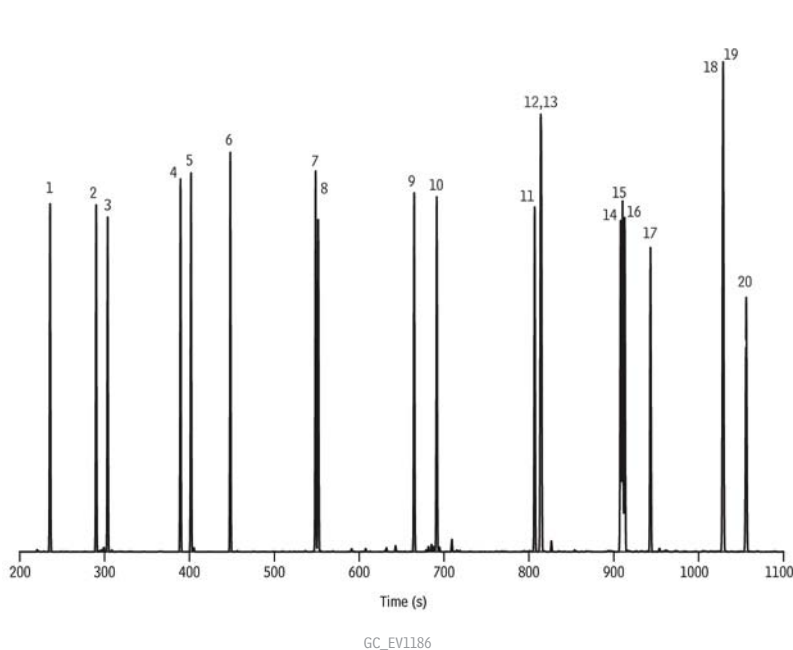


# Polycyclic Aromatic Hydrocarbons on Rxi®-17Sil MS (15m x 0.25mm x 0.25µm)



## Peaks

- |                        |                            |
|------------------------|----------------------------|
| 1. Naphthalene         | 12. Chrysene               |
| 2. 2-Methylnaphthalene | 13. Triphenylene           |
| 3. 1-Methylnaphthalene | 14. Benzo(b)fluoranthene   |
| 4. Acenaphthylene      | 15. Benzo(k)fluoranthene   |
| 5. Acenaphthene        | 16. Benzo(j)fluoranthene   |
| 6. Fluorene            | 17. Benzo(a)pyrene         |
| 7. Phenanthrene        | 18. Indeno(1,2,3-cd)pyrene |
| 8. Anthracene          | 19. Dibenz(a,h)anthracene  |
| 9. Fluoranthene        | 20. Benzo(ghi)perylene     |
| 10. Pyrene             |                            |
| 11. Benzo(a)anthracene |                            |

## Column Sample

Rxi®-17Sil MS, 15 m, 0.25 mm ID, 0.25 µm (cat.# 14120)

## Diluent:

Methylene chloride

## Conc.:

20 ng/µL

## Injection

### Inj. Vol.:

1 µL split (split ratio 20:1)

### Liner:

4mm Split Precision® Liner w/Wool (cat.# 21022)

### Inj. Temp.:

275 °C

### Split Vent

### Flow Rate:

42 mL/min.

## Oven

### Oven Temp:

80 °C (hold 1 min.) to 320 °C at 15 °C/min. (hold 2 min.)

## Carrier Gas

### Flow Rate:

H<sub>2</sub> constant flow

### Detector

FID @ 340 °C

### Constant Column +

### Constant Make-up:

50 mL/min.

### Make-up

### Gas Type:

N<sub>2</sub>

### Data Rate:

20 Hz

## Instrument

Agilent/HP6890 GC