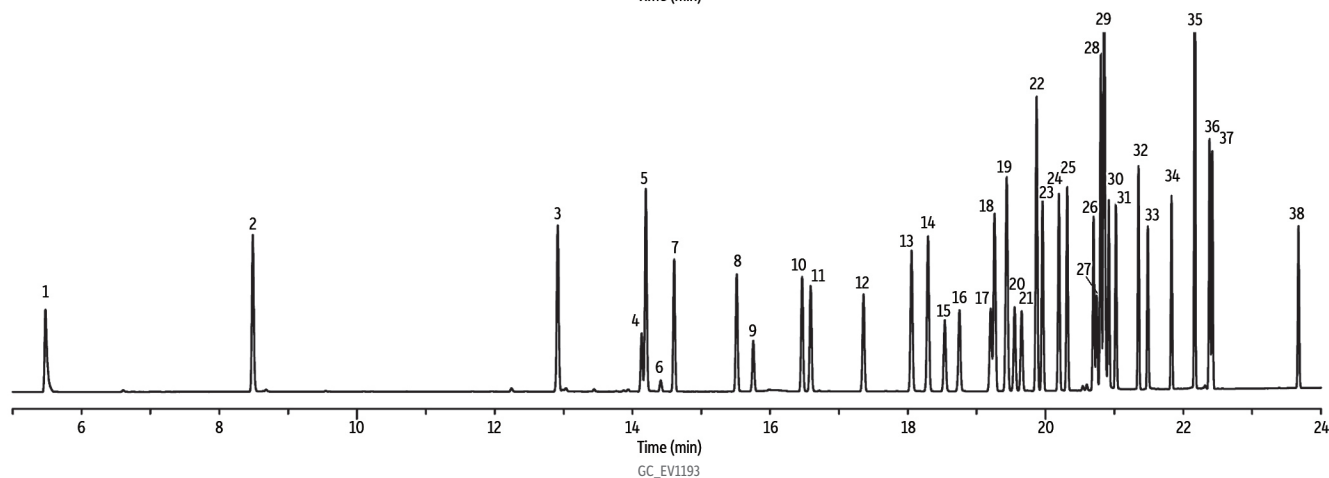
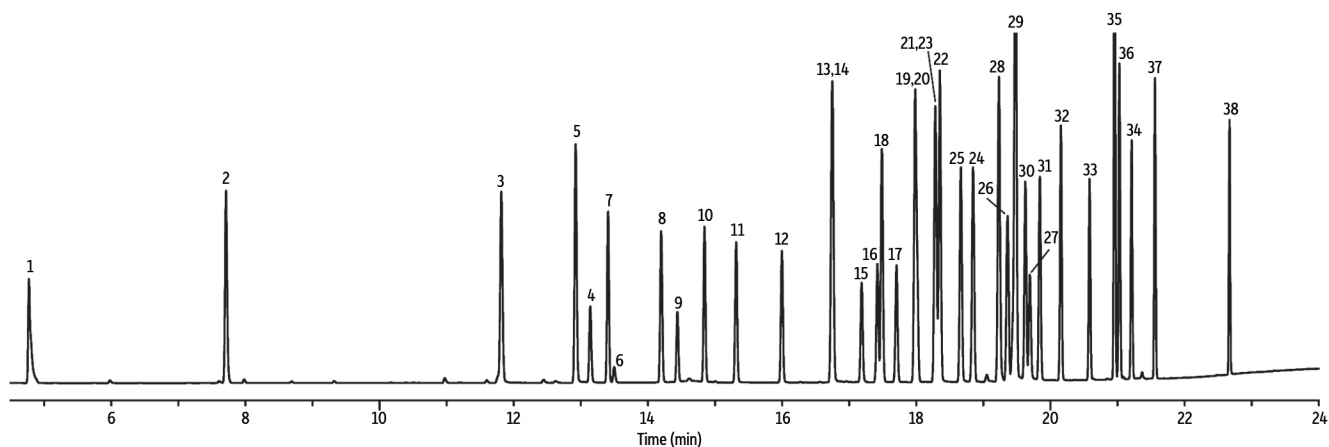


Organochlorine Pesticides by EPA Method 8081B on Rtx-CLPesticides/Rtx-CLPesticides2 (extended list)



Peaks	Conc. (ng/mL)	Peaks	Conc. (ng/mL)	Peaks	Conc. (ng/mL)
1. 1,2-Dibromo-3-chloropropane	100	14. Isodrin	100	27. Chlorobenzilate	500
2. Hexachloro-cyclopentadiene	100	15. Oxychlordan	50	28. 2,4'-DDT	100
3. Tetrachloro- <i>m</i> -xylene (SS)	100	16. Heptachlor epoxide	40	29. <i>cis</i> -Nonachlor	100
4. <i>cis</i> -Diallate	500	17. <i>trans</i> -Chlordane	40	30. 4,4'-DDD	80
5. Hexachlorobenzene	100	18. 2,4'-DDE	100	31. Endosulfan II	80
6. <i>trans</i> -Diallate	500	19. <i>trans</i> -Nonachlor	100	32. 4,4'-DDT	80
7. α -BHC	40	20. <i>cis</i> -Chlordane	40	33. Endrin aldehyde	80
8. γ -BHC	40	21. Endosulfan I	40	34. Endosulfan sulfate	80
9. β -BHC	40	22. Captan	100	35. Methoxychlor	400
10. δ -BHC	40	23. 4,4'-DDE	100	36. Mirex	100
11. Heptachlor	40	24. Dieldrin	80	37. Endrin ketone	80
12. Aldrin	40	25. 2,4'-DDD	100	38. Decachloro-biphenyl	100
13. Chlorpyrifos	100	26. Endrin	80		

Column Rtx-CLPesticides2 30 m, 0.32 mm ID, 0.25 μ m (cat.# 11324) and Rtx-CLPesticides 30 m, 0.32 mm ID, 0.32 μ m (cat.# 11141) using Rxi guard column 5 m, 0.32 mm ID (cat.# 10039) with deactivated universal "Y" Press-Tight connector (cat.# 20405-261)

Standard/Sample Organochlorine pesticide mix AB #2 (cat.# 32292) Organochlorine pesticide mix C #1 (cat.# 32296) 2,4,5,6-Tetrachloro-*m*-xylene (cat.# 32027) Decachlorobiphenyl (BZ #209) (cat.# 32029) Chlorpyrifos (cat.# 32212) 2,4'-DDE (cat.# 32099) 2,4'-DDD (cat.# 32098) Chlorobenzilate (cat.# 32211) Captan (cat.# custom) *cis*-Nonachlor (cat.# custom) Mirex (cat.# custom) Oxychlordan (cat.# custom) Diallate (cat.# custom)

Diluent: Hexane

Injection
 Inj. Vol.: 1 μ L splitless (hold 0.3 min)
 Liner: Cyclo double taper (4 mm) (cat.# 20896)
 Inj. Temp.: 250 $^{\circ}$ C
Oven
 Oven Temp.: 80 $^{\circ}$ C to 175 $^{\circ}$ C at 8 $^{\circ}$ C/min to 195 $^{\circ}$ C at 11 $^{\circ}$ C/min to 235 $^{\circ}$ C at 7 $^{\circ}$ C/min to 320 $^{\circ}$ C at 25 $^{\circ}$ C/min (hold 3 min)
Carrier Gas
 Linear Velocity: 28 cm/sec
Detector
 Make-up Gas Flow Rate: 60 mL/min
 Make-up Gas Type: N₂
Instrument
 Agilent/HP6890 GC
Notes
 This chromatogram was obtained using an Agilent micro-ECD. To obtain comparable results, you will need to employ a micro-ECD in addition to confirmational dual columns connected to a 5-meter guard column using a "Y" Press-Tight connector.