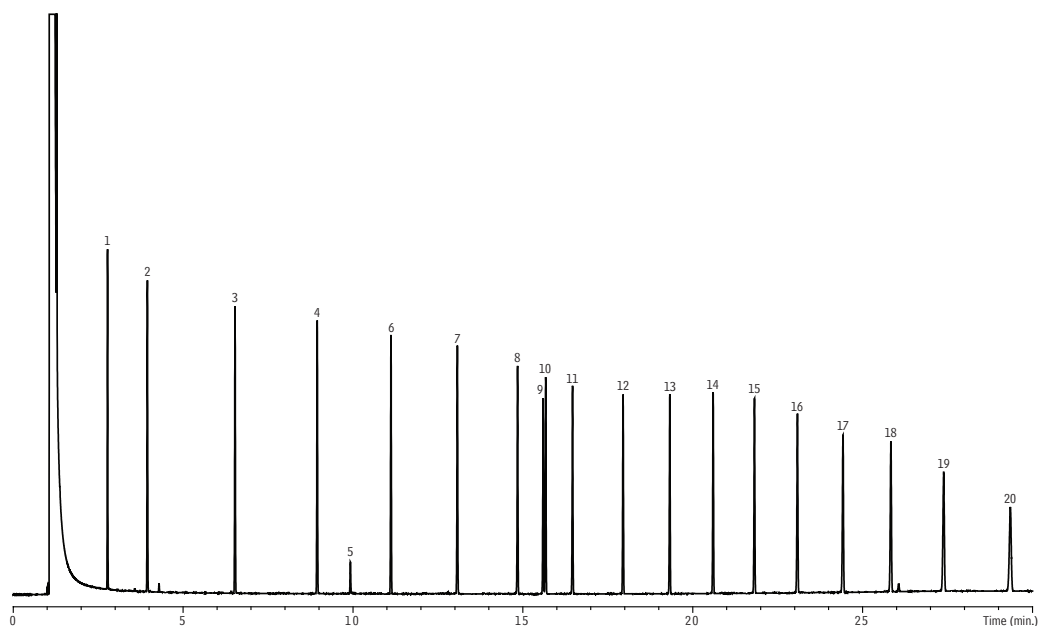


NJDEP EPH Aliphatic Fraction on Rtx-5



GC_EV1208

Peaks	Peaks
1. C9	11. C22
2. C10	12. C24
3. C12	13. C26
4. C14	14. C28
5. 2-Fluorobiphenyl	15. C30
6. C16	16. C32
7. C18	17. C34
8. C20	18. C36
9. Chlorooctadecane	19. C38
10. C21	20. C40

Column Rtx-5, 30 m, 0.32 mm ID, 0.25 μ m (cat.# 10224)
Standard/Sample NJDEP EPH 10/08 Rev.2 aliphatics (cat.# 30540)
 NJDEP EPH 10/08 Rev.2 aromatics (cat.# 30541)
 MA EPH surrogate spike mix (cat.# 31479)
 MA fractionation surrogate spike mix (cat.# 31480)
Diluent: Hexane
Conc.: 200 ppm
Injection
Inj. Vol.: 1 μ L splitless (hold 1.5 min)
Liner: Gooseneck splitless (4 mm) w/wool (cat.# 22406)
Inj. Temp.: 280 $^{\circ}$ C
Purge Flow: 40 mL/min
Oven
Oven Temp.: 60 $^{\circ}$ C (hold 1 min) to 300 $^{\circ}$ C at 12 $^{\circ}$ C/min to 330 $^{\circ}$ C at 6 $^{\circ}$ C/min (hold 2 min)
Carrier Gas He, constant pressure (18 psi, 124.1 kPa)
Temp.: 60 $^{\circ}$ C
Detector FID @ 330 $^{\circ}$ C
Make-up Gas Flow Rate: 40 mL/min
Make-up Gas Type: N₂
Instrument HP5890 GC
Sample Preparation A fractionation calibration check standard for the NJDEP EPH method was prepared and fractionated according to the method. See chromatogram GC_EV1209 for aromatic fraction.