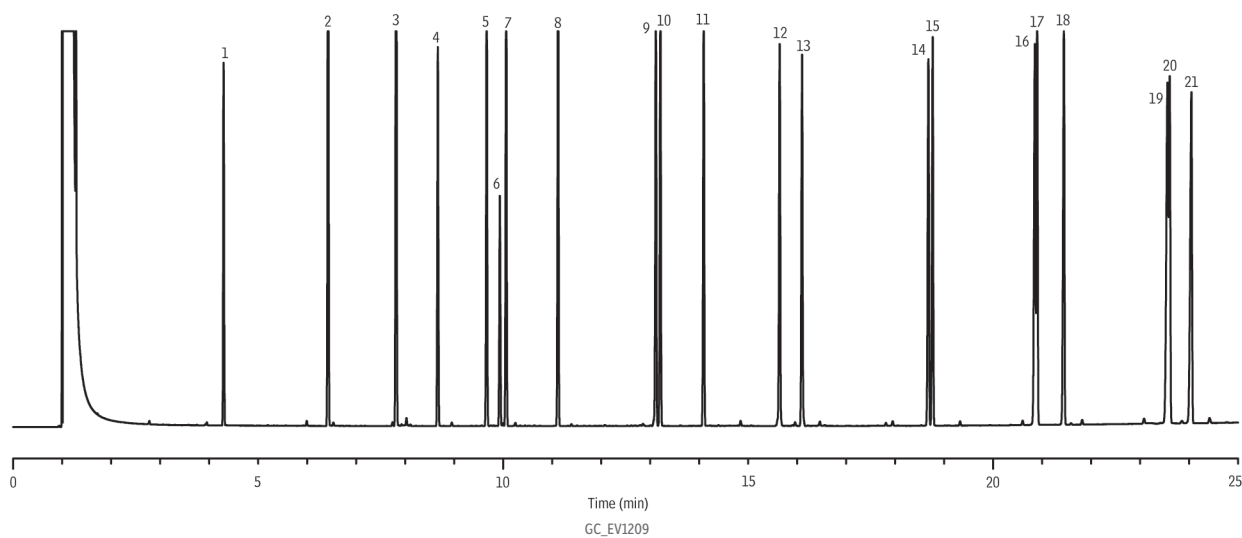


NJDEP EPH Aromatics on Rtx-5



Peaks	Peaks
1. 1,2,3-Trimethylbenzene	11. o-Terphenyl
2. Naphthalene	12. Fluoranthene
3. 2-Methylnaphthalene	13. Pyrene
4. 2-Fluorobiphenyl	14. Benzo[a]anthracene
5. Acenaphthalene	15. Chrysene
6. 2-Bromonaphthalene	16. Benzo[b]fluoranthene
7. Acenaphthene	17. Benzo[k]fluoranthene
8. Fluorene	18. Benzo[a]pyrene
9. Phenanthrene	19. Indeno[1,2,3-cd]pyrene
10. Anthracene	20. Dibenzo[a,h]anthracene
	21. Benzo[ghi]perylene

Column	Rtx-5, 30 m, 0.32 mm ID, 0.25 µm (cat.# 10224)
Standard/Sample	NJDEP EPH 10/08 Rev.2 aliphatics (cat.# 30540) NJDEP EPH 10/08 Rev.2 aromatics (cat.# 30541) MA EPH surrogate spike mix (cat.# 31479) MA fractionation surrogate spike mix (cat.# 31480)
Diluent:	Hexane
Conc.:	200 ppm
Injection	
Inj. Vol.:	1 µL splitless (hold 1.5 min)
Liner:	Gooseneck splitless (4 mm) w/wool (cat.# 22406)
Inj. Temp.:	280 °C
Purge Flow:	40 mL/min
Oven	
Oven Temp.:	60 °C (hold 1 min) to 300 °C at 12 °C/min to 330 °C at 6 °C/min (hold 2 min)
Carrier Gas	He, constant pressure (18 psi, 124.1 kPa)
Temp.:	60 °C
Detector	FID @ 330 °C
Make-up Gas Flow Rate:	40 mL/min
Make-up Gas Type:	N ₂
Instrument	HP5890 GC
Sample Preparation	A fractionation calibration check standard for the NJDEP EPH method was prepared and fractionated according to the method. See chromatogram GC_EV1208 for aliphatic fraction.