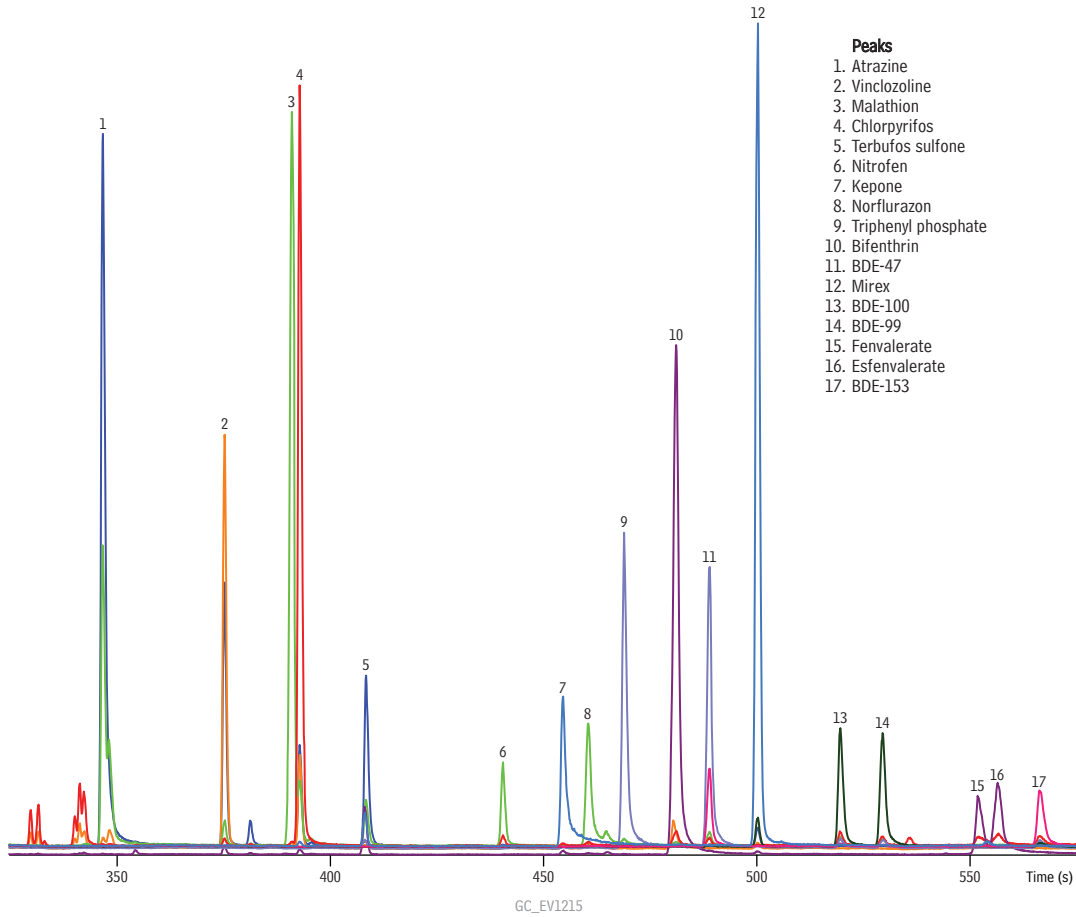


**Pesticides and Brominated Flame Retardants by EPA Method 527 on Rxi®-5Sil MS**



- Peaks**
1. Atrazine
  2. Vinclozoline
  3. Malathion
  4. Chlorpyrifos
  5. Terbufos sulfone
  6. Nitrofen
  7. Kepone
  8. Norflurazon
  9. Triphenyl phosphate
  10. Bifenthrin
  11. BDE-47
  12. Mirex
  13. BDE-100
  14. BDE-99
  15. Fenvalerate
  16. Esfenvalerate
  17. BDE-153

**Column** Rxi®-5Sil MS, 15 m, 0.25 mm ID, 0.25 µm (cat.# 13620)  
 using IP Deactivated Guard Column 5 m, 0.53 mm ID (cat.# 10045)  
 with Universal Press-Tight® Connectors (cat.# 20429)

**Sample** PBDE Mix (cat.# 33098)  
 Pesticides Mix #1, Method 527 (cat.# 33007)  
 Pesticides Mix #2, Method 527 (cat.# 33008)  
 Internal Standard, Method 527 (cat.# 33010)  
 Surrogate Standard, Method 527 (cat.# 33009)

**Diluent:** ethyl acetate:methylene chloride (1:1)  
**Conc.:** 80 pg/µL (1 ng on-column)

**Injection**  
 Inj. Vol.: 12.5 µL splitless (hold 0.583 min.)  
 Liner: Gooseneck Splitless (4mm) w/Semivolatiles Wool (cat.# 20799-231.5)  
 Inj. Temp.: 250 °C  
 Purge Flow: 40 mL/min.

**Oven**  
 Oven Temp: 40 °C (hold 0.60 min.) to 320 °C at 30 °C/min. (hold 1.07 min.)

**Carrier Gas**  
 He, constant flow  
 Flow Rate: 2 mL/min.

**Detector**  
 MS

**Mode:**  
 Transfer Line  
 Temp.: 290 °C  
 Analyzer Type: TOF  
 Source Temp.: 225 °C  
 Electron Energy: -70 eV  
 Mass Defect: -20 mu/100 u  
 Solvent Delay  
 Time: 3.33 min.  
 Acquisition  
 Range: 45 - 750 amu  
 Spectral  
 Acquisition Rate: 10 spectra/sec

**Instrument** LECO Pegasus 4D GCxGC-TOFMS

**Notes** Carrier Gas Flow: 2 mL/min. corrected constant flow via pressure ramps