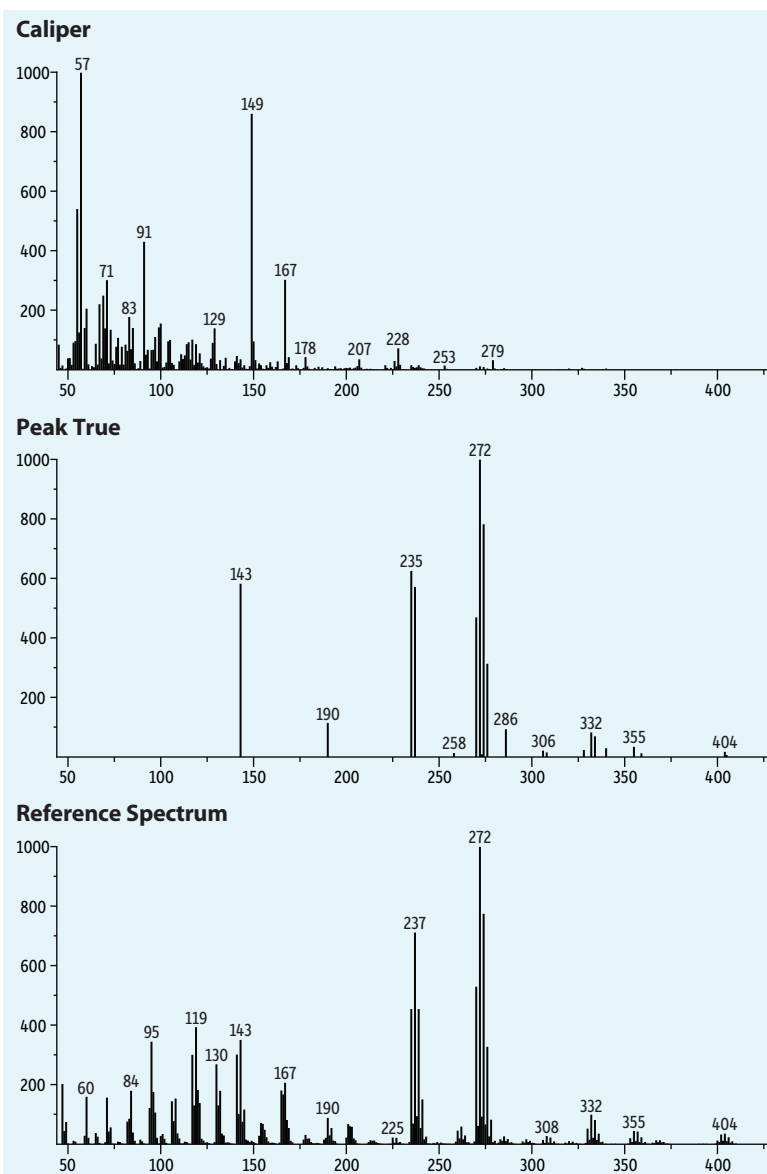
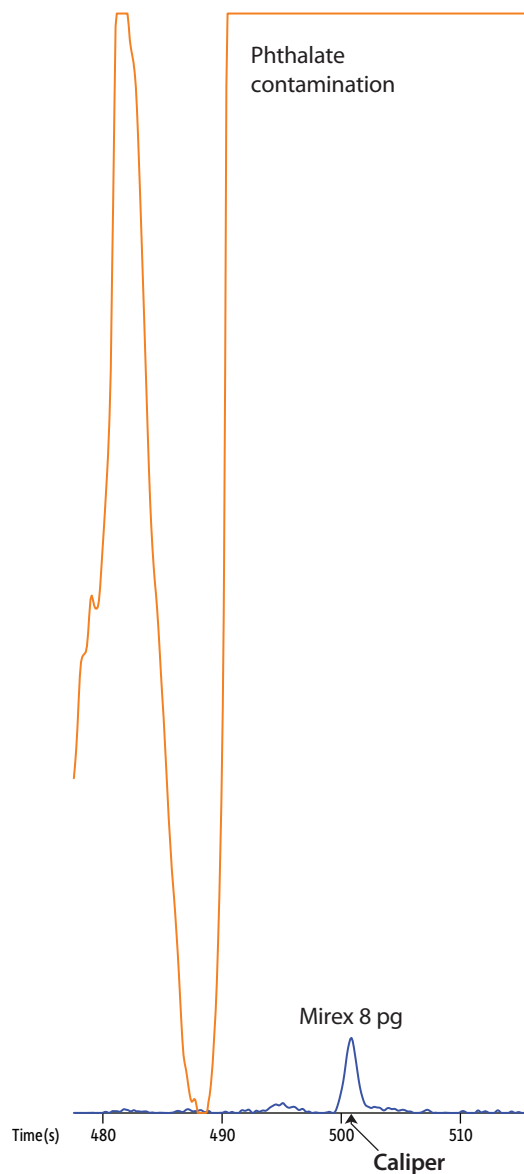


Comparison of Caliper Spectrum and Peak True After Spectral Deconvolution Relative to Reference Spectrum of Mirex Peak That is Masked by Phthalate Contamination



GC_EV1221

Column Rxi®-5Sil MS, 15 m, 0.25 mm ID, 0.25 µm (cat.# 13620)
using IP Deactivated Guard Column 5 m, 0.53 mm ID (cat.# 10045)
with Universal Press-Tight® Connectors (cat.# 20429)

Sample Conc.: Spring Creek water sample
8 pg on-column

Injection
Inj. Vol.: 12.5 µL splitless (hold 0.583 min.)
Liner: Gooseneck Splitless (4mm) w/Semivolatiles Wool (cat.# 20799-231.5)
Inj. Temp.: 250 °C
Purge Flow: 40 mL/min.

Oven
Oven Temp: 40 °C (hold 0.60 min.) to 320 °C at 30 °C/min. (hold 1.07 min.)
Carrier Gas He, constant flow
Flow Rate: 2 mL/min.
Detector MS

Transfer Line
Temp.: 290 °C
Analyzer Type: TOF
Source Temp.: 225 °C
Electron Energy: -70 eV
Mass Defect: -20 mu/100 u
Solvent Delay
Time: 3.33 min.
Acquisition Range: 45 - 750 amu
Spectral Acquisition Rate: 10 spectra/sec
Instrument LECO Pegasus 4D GCxGC-TOFMS
Notes Carrier Gas Flow: 2 mL/min. corrected constant flow via pressure ramps