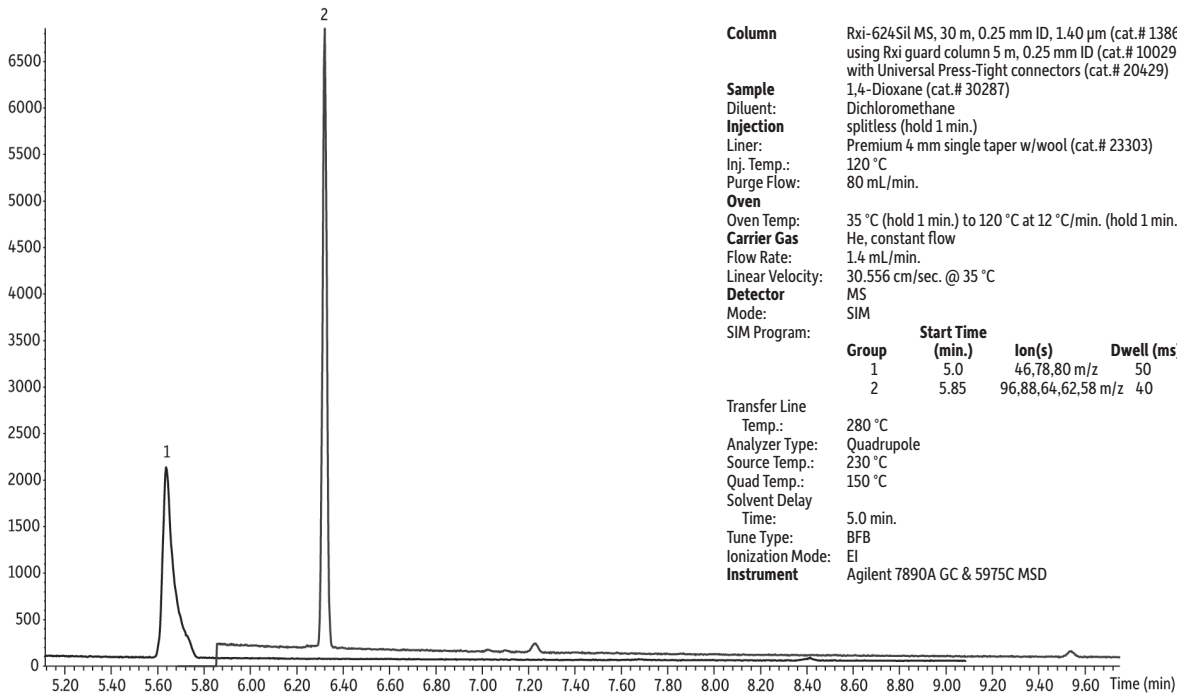


# 1,4-Dioxane on Rxi-624Sil MS (extracted ion chromatogram, m/z 88)

## Peaks

- 1  $\mu\text{L}$  injection of 500 pg/ $\mu\text{L}$  1,4-dioxane standard (500 pg on-column)
- 10  $\mu\text{L}$  injection of 50 pg/ $\mu\text{L}$  1,4-dioxane standard (500 pg on-column)



**Column** Rxi-624Sil MS, 30 m, 0.25 mm ID, 1.40  $\mu\text{m}$  (cat.# 13868) using Rxi guard column 5 m, 0.25 mm ID (cat.# 10029) with Universal Press-Tight connectors (cat.# 20429)  
**Sample** 1,4-Dioxane (cat.# 30287)  
**Diluent:** Dichloromethane  
**Injection** splitless (hold 1 min.)  
**Liner:** Premium 4 mm single taper w/wool (cat.# 23303)  
**Inj. Temp.:** 120  $^{\circ}\text{C}$   
**Purge Flow:** 80 mL/min.  
**Oven**  
**Oven Temp:** 35  $^{\circ}\text{C}$  (hold 1 min.) to 120  $^{\circ}\text{C}$  at 12  $^{\circ}\text{C}/\text{min}$ . (hold 1 min.)  
**Carrier Gas** He, constant flow  
**Flow Rate:** 1.4 mL/min.  
**Linear Velocity:** 30.556 cm/sec. @ 35  $^{\circ}\text{C}$   
**Detector** MS  
**Mode:** SIM  
**SIM Program:**

**Transfer Line**  
**Temp.:** 280  $^{\circ}\text{C}$   
**Analyzer Type:** Quadrupole  
**Source Temp.:** 230  $^{\circ}\text{C}$   
**Quad Temp.:** 150  $^{\circ}\text{C}$   
**Solvent Delay**  
**Time:** 5.0 min.  
**Tune Type:** BFB  
**Ionization Mode:** EI  
**Instrument** Agilent 7890A GC & 5975C MSD

GC\_EV1260