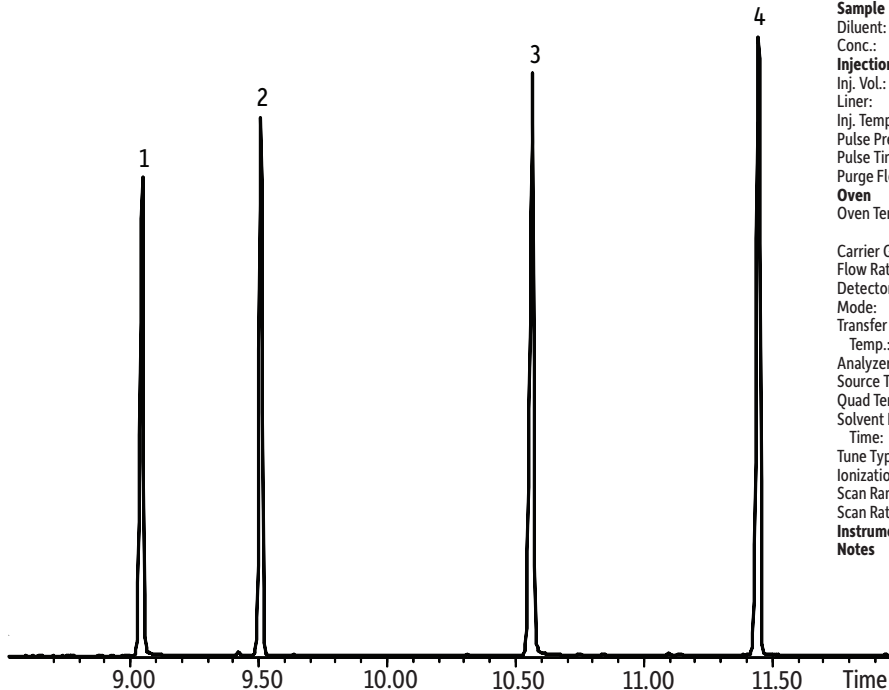


# Semivolatile GC-MS Tune Verification Mix on Rxi®-5Sil MS

## Peaks

1. Pentachlorophenol
2. Decafluorotriphenylphosphine
3. Benzidine
4. p,p'-DDT



**Column** Rxi®-5Sil MS, 30 m, 0.25 mm ID, 0.25 µm (cat.# 13623)  
**Sample** GC-MS tuning mixture (cat.# 31615)  
**Diluent:** Dichloromethane  
**Conc.:** 50 ng/µL  
**Injection**  
**Inj. Vol.:** 1 µL pulsed splitless (hold 0.59 min)  
**Liner:** Premium 4 mm single taper w/wool (cat.# 23303.5)  
**Inj. Temp.:** 270 °C  
**Pulse Pressure:** 30 psi (206.8kPa)  
**Pulse Time:** 0.64 min  
**Purge Flow:** 100 mL/min  
**Oven**  
**Oven Temp:** 40 °C (hold 1 min) to 280 °C at 25 °C/min to 320 °C at 5 °C/min (hold 1 min)  
**Carrier Gas** He, constant flow  
**Flow Rate:** 1.2 mL/min  
**Detector** MS  
**Mode:** Scan  
**Transfer Line**  
**Temp.:** 280 °C  
**Analyzer Type:** Quadrupole  
**Source Temp.:** 276 °C  
**Quad Temp.:** 150 °C  
**Solvent Delay**  
**Time:** 2.19 min  
**Tune Type:** DFTPP  
**Ionization Mode:** EI  
**Scan Range:** 35-550 amu  
**Scan Rate:** 5.36 scans/sec  
**Instrument** Agilent 7890A GC & 5975C MSD  
**Notes** 7890 Siltek®-treated EZ Twist Top® split/splitless injection port (cat.# 22178)  
Flip Seal™ dual Vespel® ring inlet seal (cat.# 234-11)

GC\_EV1273