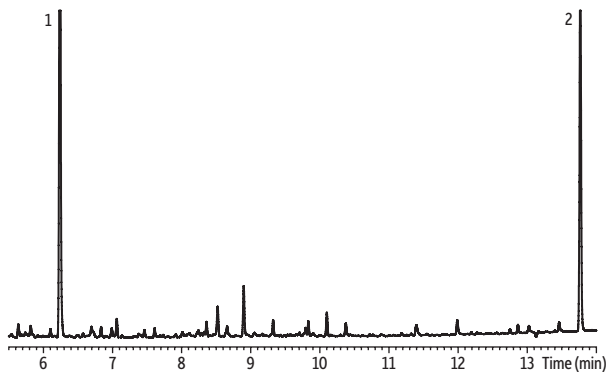


Florisil SPE Extraction Blank



GC_EV1295

Peaks

1. 2,4,5,6-Tetrachloro-*m*-xylene (SS)
2. Decachlorobiphenyl (SS)

Column	Rtx-CLPesticides2, 30 m, 0.32 mm ID, 0.25 µm (cat.# 11324) using Rxi guard column 5 m, 0.32 mm ID (cat.# 10039) with universal "Y" Press-Tight connector (cat.# 20406-261)
Standard/Sample	2,4,5,6-Tetrachloro- <i>m</i> -xylene (cat.# 32027) Decachlorobiphenyl (BZ #209) (cat.# 32029)
Diluent:	Hexane
Conc.:	10 ng/mL
Injection	
Inj. Vol.:	2 µL splitless (hold 0.75 min)
Liner:	Premium 4 mm single taper w/wool (cat.# 23303)
Inj. Temp.:	250 °C
Purge Flow:	50 mL/min
Oven	
Oven Temp:	110 °C (hold 0.5 min) to 320 °C at 15 °C/min (hold 5 min)
Carrier Gas	He, constant flow
Flow Rate:	3.5 mL/min
Detector	µ-ECD @ 330 °C
Make-up Gas Flow Rate:	50 mL/min
Make-up Gas Type:	N ₂
Data Rate:	50 Hz
Instrument	Agilent/HP6890 GC
Sample Preparation	SPE: Condition Florisil tube (cat.# 24034) with 6 mL hexane. Elute with hexane:acetone (90:10), collecting 10 mL. Concentrate to 1 mL.