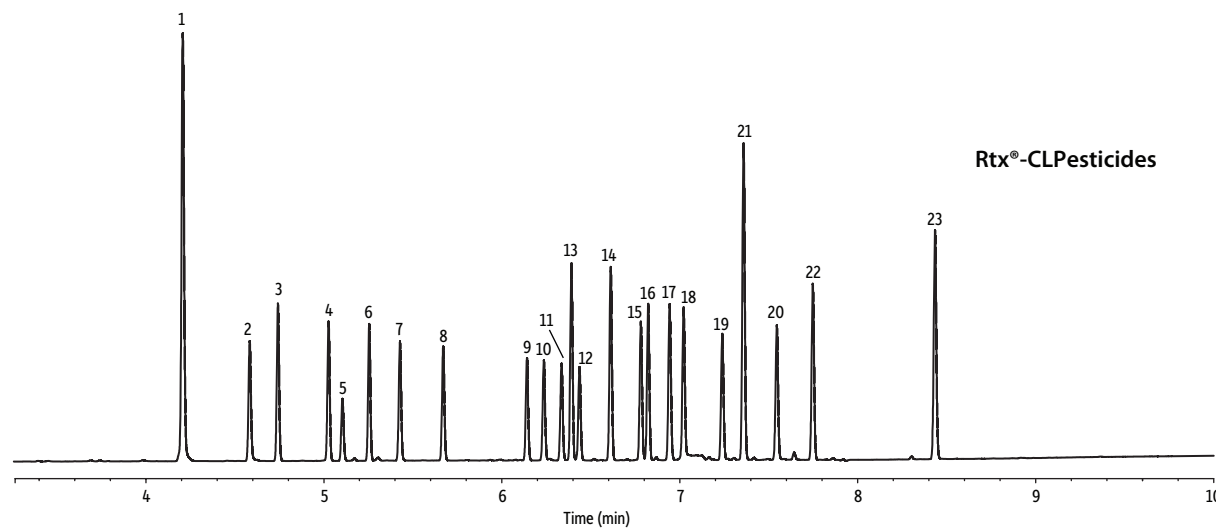
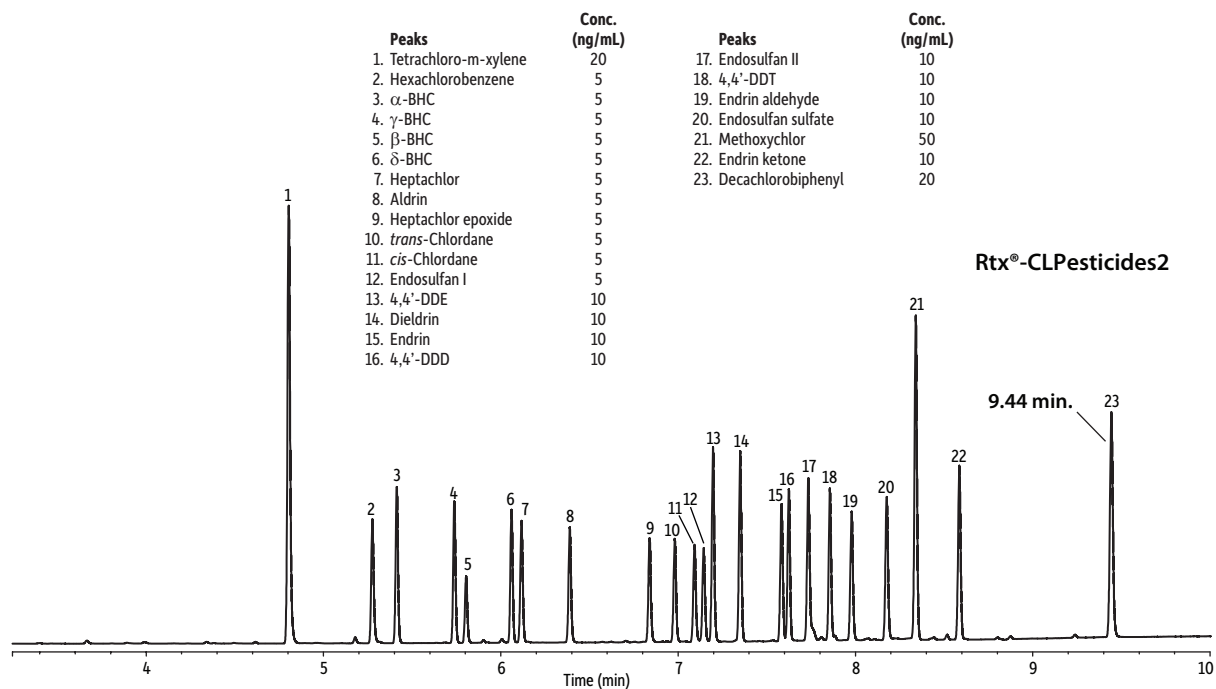


# Organochlorine Pesticides (EPA Method 8081) on Rtx-CLPesticides and Rtx-CLPesticides2 Using Helium



GC\_EV1310

**Columns** Rtx-CLPesticides2 30 m, 0.32 mm ID, 0.25  $\mu$ m (cat.# 11324) and Rtx-CLPesticides 30 m, 0.32 mm ID, 0.32  $\mu$ m (cat.# 11141) using Rxi guard column 5 m, 0.32 mm ID (cat.# 10039) with universal "Y" Press-Tight™ connector (cat.# 20406-261)

**Sample** Organochlorine pesticide mix AB #2 (cat.# 32292)  
Hexachlorobenzene (cat.# 32231)  
2,4,5,6-Tetrachloro-*m*-xylene (cat.# 32027)  
Decachlorobiphenyl (BZ #209) (cat.# 32029)  
*n*-Hexane

**Diluent:**  
**Injection**  
Inj. Vol.: 2  $\mu$ L splitless (hold 0.75 min)  
Liner: Premium 4 mm single taper w/wool (cat.# 23303)  
Inj. Temp.: 250 °C  
Purge Flow: 50 mL/min

**Oven**  
Oven Temp.: 110 °C (hold 0.5 min) to 325 °C at 25 °C/min (hold 2 min)  
**Carrier Gas** He, constant flow  
**Linear Velocity:** 52 cm/sec  
**Detector** Micro-ECD @ 340 °C  
Make-up Gas Flow Rate: 50 mL/min  
Make-up Gas Type: N<sub>2</sub>  
Data Rate: 50 Hz  
**Instrument** Agilent/HP6890 GC