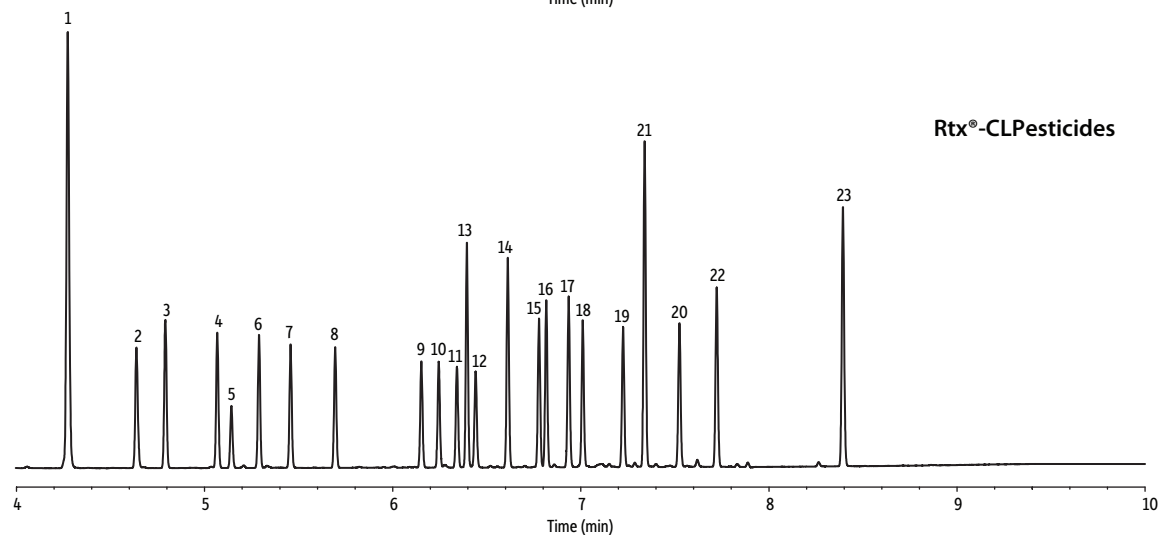
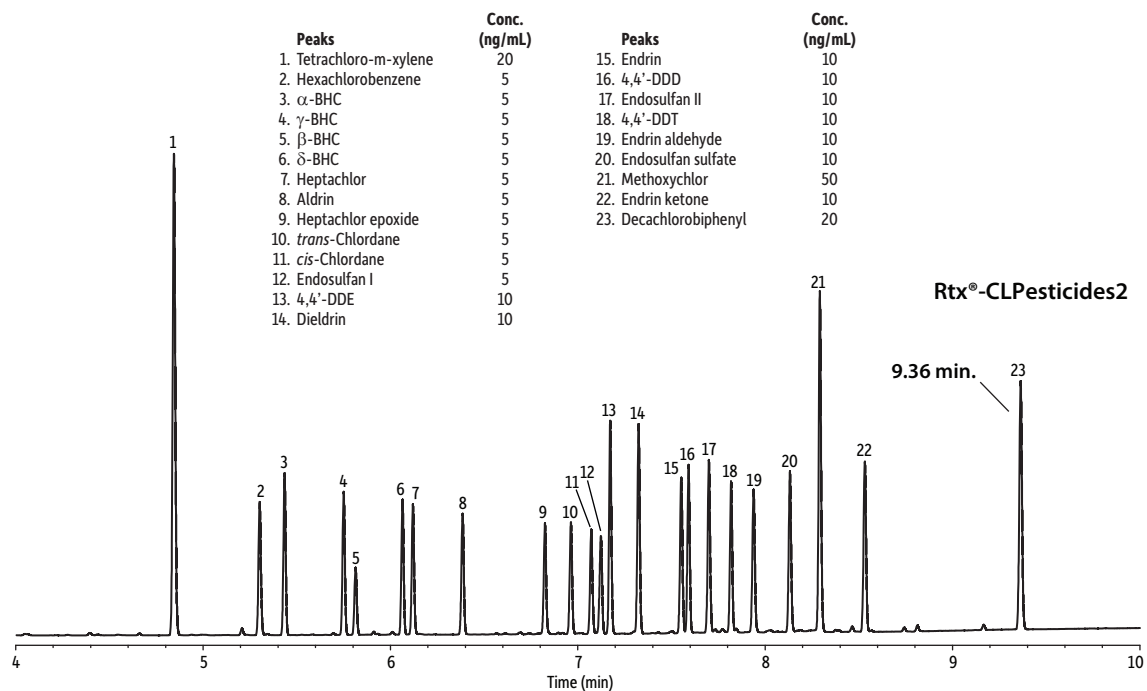


Organochlorine Pesticides (EPA Method 8081) on Rtx-CLPesticides and Rtx-CLPesticides2 Using Hydrogen



GC_EV1313

Columns Rtx-CLPesticides2 30 m, 0.32 mm ID, 0.25 μ m (cat.# 11324) and Rtx-CLPesticides 30 m, 0.32 mm ID, 0.32 μ m (cat.# 11141) using Rxi guard column 5 m, 0.32 mm ID (cat.# 10039) with universal "Y" Press-Tight connector (cat.# 20406-261)

Sample Organochlorine pesticide mix AB #2 (cat.# 32292)
2,4,5,6-Tetrachloro-*m*-xylene (cat.# 3202T)
Decachlorobiphenyl (BZ #209) (cat.# 32029)
Hexachlorobenzene (cat.# 32231)
n-Hexane

Diluent:
Injection
Inj. Vol.: 2 μ L splitless (hold 0.75 min)
Liner: Premium 4 mm single taper w/wool (cat.# 23303)
Inj. Temp.: 250 $^{\circ}$ C
Purge Flow: 50 mL/min

Oven
Oven Temp.: 110 $^{\circ}$ C (hold 0.5 min) to 325 $^{\circ}$ C at 25 $^{\circ}$ C/min (hold 2 min)
Carrier Gas H₂, constant flow
Linear Velocity: 52 cm/sec
Detector Micro-ECD @ 340 $^{\circ}$ C
Make-up Gas Flow Rate: 50 mL/min
Make-up Gas Type: N₂
Data Rate: 50 Hz
Instrument Agilent/HP6890 GC