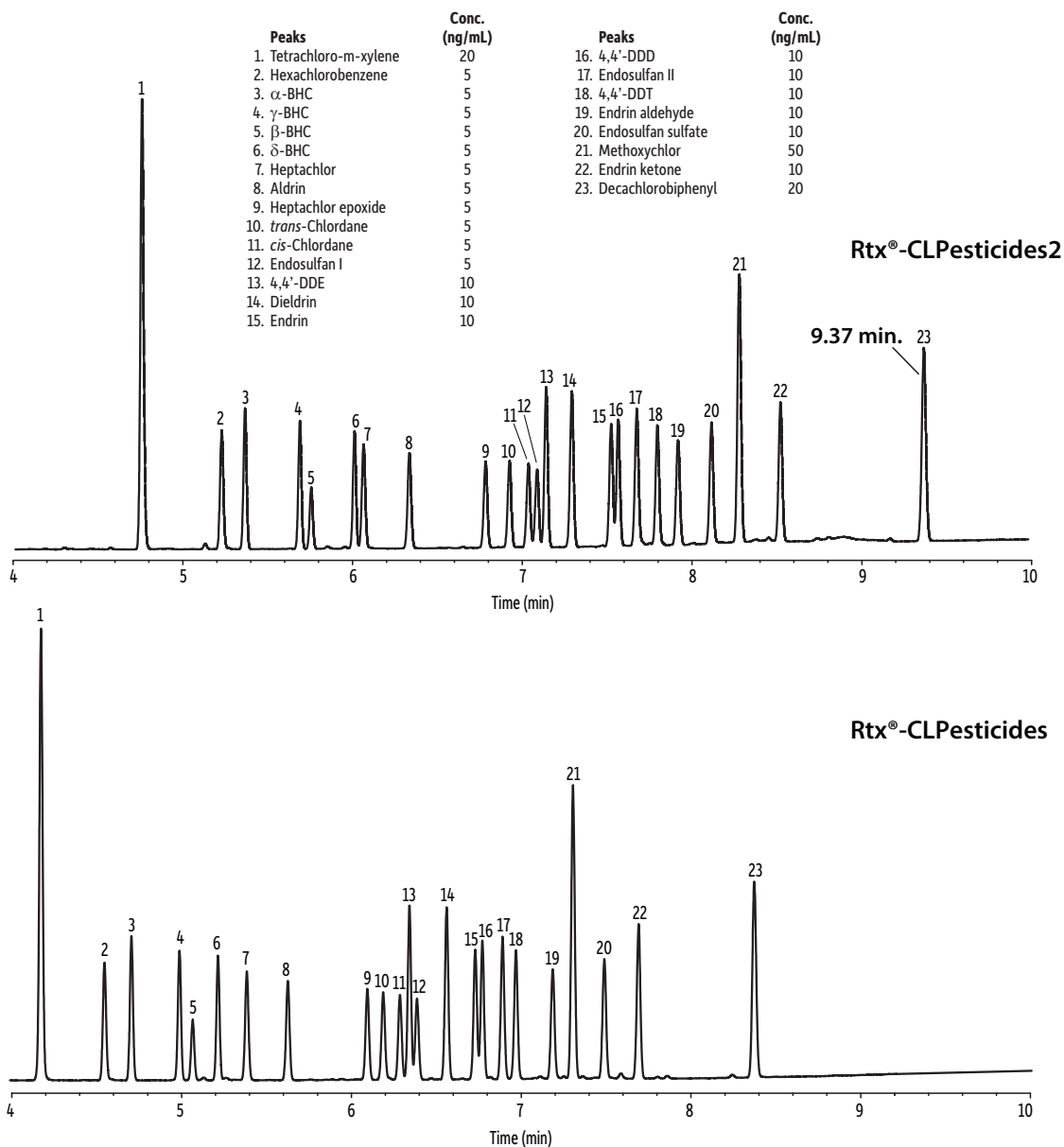


Organochlorine Pesticides (EPA Method 8081) on Rtx-CLPesticides and Rtx-CLPesticides2 With Nitrogen



GC_EV1315

Columns

Rtx-CLPesticides2 30 m, 0.32 mm ID, 0.25 μ m (cat.# 11324) and Rtx-CLPesticides 30 m, 0.32 mm ID, 0.32 μ m (cat.# 11141) using Rxi guard column 5 m, 0.32 mm ID (cat.# 10039) with universal "Y" Press-Tight connector (cat.# 20406-261) Organochlorine pesticide mix AB #2 (cat.# 32292) 2,4,5,6-Tetrachloro-*m*-xylene (cat.# 32027) Decachlorobiphenyl (BZ #209) (cat.# 32029) Hexachlorobenzene (cat.# 32231) *n*-Hexane

Diluent:

Injection

Inj. Vol.:

Liner:

Inj. Temp.:

Purge Flow:

2 μ L splitless (hold 0.75 min)
Premium 4 mm single taper w/wool (cat.# 23303)
250 °C
50 mL/min

Oven

Oven Temp.: 110 °C (hold 0.5 min) to 325 °C at 25 °C/min (hold 2 min)

Carrier Gas N₂, constant flow

Linear Velocity: 53 cm/sec

Detector Micro-ECD @ 340 °C

Make-up Gas Flow Rate: 50 mL/min

Make-up Gas Type: N₂

Data Rate: 50 Hz

Instrument Agilent/HP6890 GC