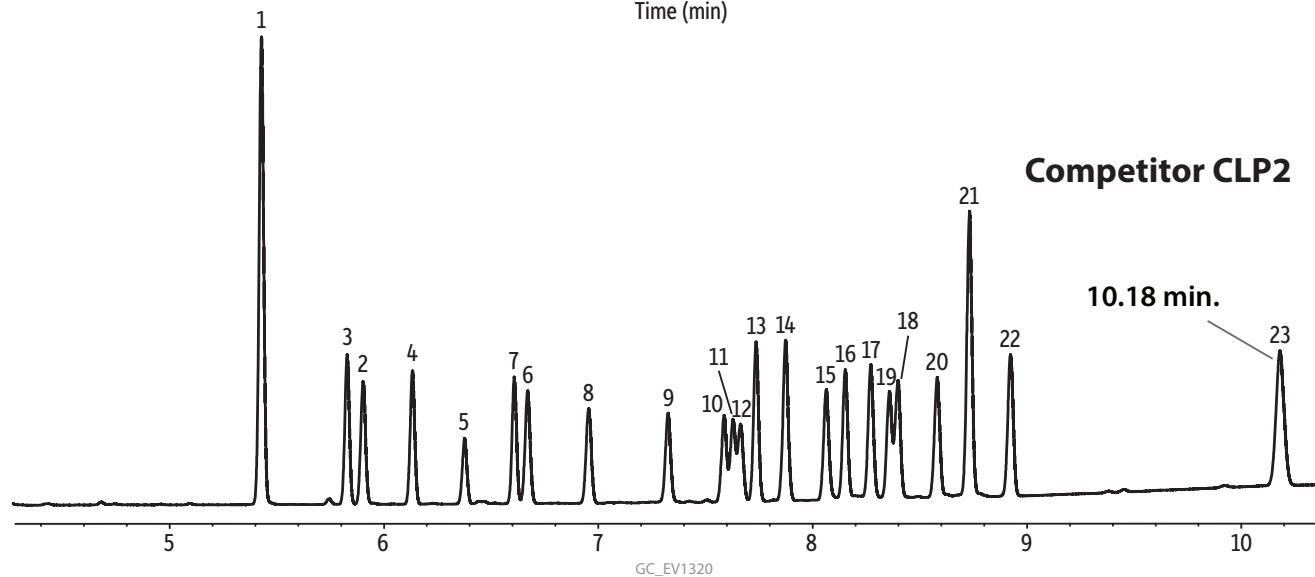
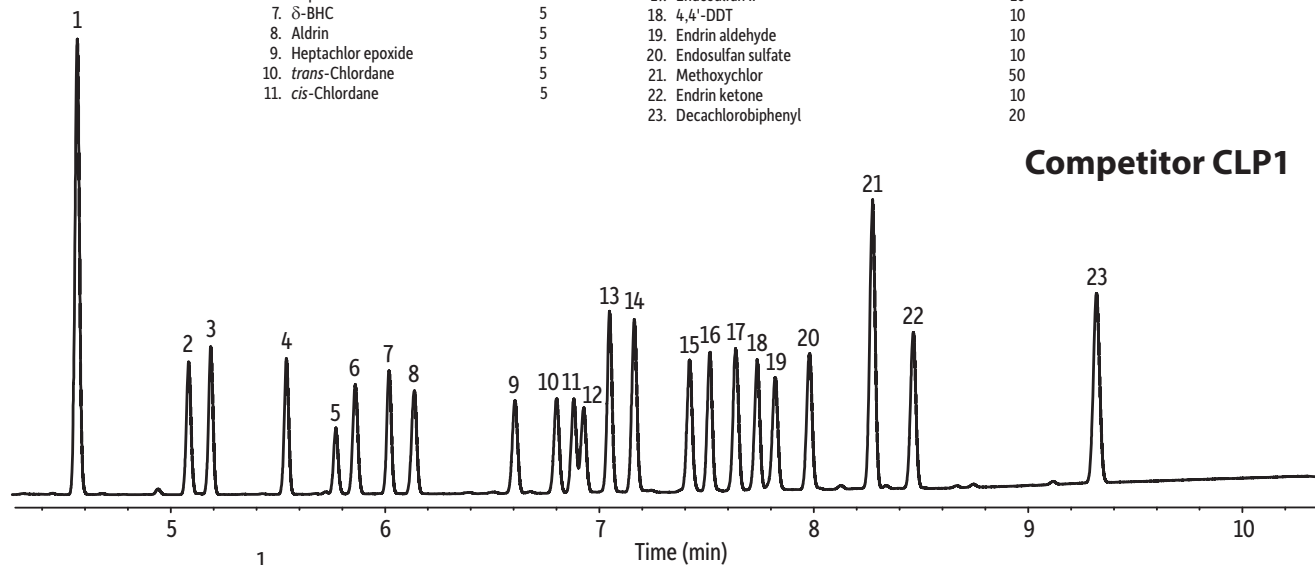


Organochlorine Pesticides (EPA Method 8081) on DB-CLP1 and DB-CLP2 Using Nitrogen

| Peaks | Conc. (ng/mL) | Peaks | Conc. (ng/mL) |
|----------------------------------|---------------|------------------------|---------------|
| 1. Tetrachloro- <i>m</i> -xylene | 20 | 12. Endosulfan I | 5 |
| 2. Hexachlorobenzene | 5 | 13. 4,4'-DDE | 10 |
| 3. α -BHC | 5 | 14. Dieldrin | 10 |
| 4. γ -BHC | 5 | 15. Endrin | 10 |
| 5. β -BHC | 5 | 16. 4,4'-DDD | 10 |
| 6. Heptachlor | 5 | 17. Endosulfan II | 10 |
| 7. δ -BHC | 5 | 18. 4,4'-DDT | 10 |
| 8. Aldrin | 5 | 19. Endrin aldehyde | 10 |
| 9. Heptachlor epoxide | 5 | 20. Endosulfan sulfate | 10 |
| 10. <i>trans</i> -Chlordane | 5 | 21. Methoxychlor | 50 |
| 11. <i>cis</i> -Chlordane | 5 | 22. Endrin ketone | 10 |
| | | 23. Decachlorobiphenyl | 20 |



Columns Competitor CLP1 30 m, 0.32 mm ID, 0.25 μ m and competitor CLP2 30 m, 0.32 mm ID, 0.5 μ m using Rxi® guard column 5 m, 0.32 mm ID (cat.# 10039) with universal "Y" Press-Tight connector (cat.# 20406-261)

Sample Organochlorine pesticide mix AB #2 (cat.# 32292)
2,4,5,6-Tetrachloro-*m*-xylene (cat.# 32027)
Decachlorobiphenyl (BZ #209) (cat.# 32029)
Hexachlorobenzene (cat.# 32231)
n-Hexane

Diluent:
Injection
Inj. Vol.: 2 μ L splitless (hold 0.75 min)
Liner: Premium 4 mm single taper w/wool (cat.# 23303)
Inj. Temp.: 250 °C
Purge Flow: 50 mL/min

Oven
Oven Temp.: 110 °C (hold 0.5 min) to 325 °C at 25 °C/min (hold 2 min)
Carrier Gas N₂, constant flow
Linear Velocity: 64 cm/sec
Detector Micro-ECD @ 340 °C
Make-up Gas
Flow Rate: 50 mL/min
Make-up
Gas Type: N₂
Data Rate: 50 Hz
Instrument Agilent/HP6890 GC