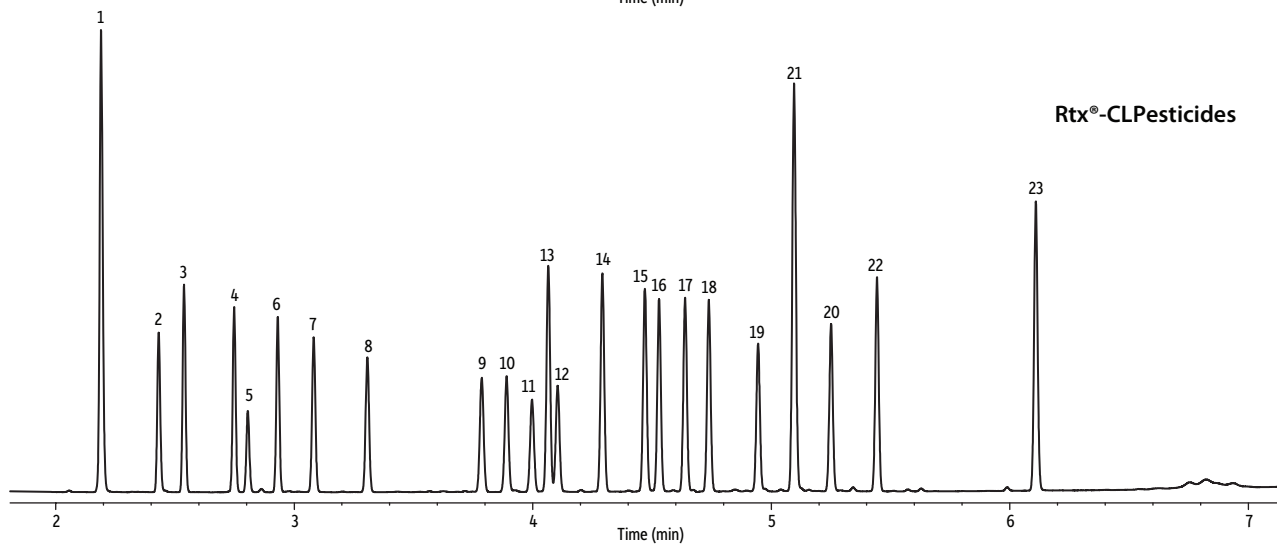
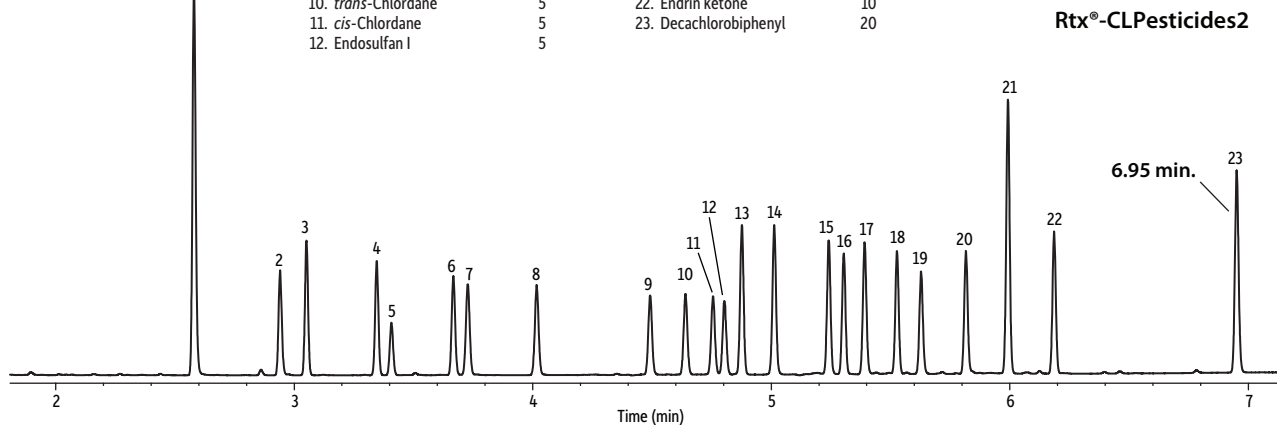


7-Minute Analysis of Organochlorine Pesticides (EPA Method 8081) on Rtx-CLPesticides and Rtx-CLPesticides2 Using Helium

| Peaks | Conc. (µg/mL) | Peaks | Conc. (µg/mL) |
|----------------------------------|---------------|------------------------|---------------|
| 1. Tetrachloro- <i>m</i> -xylene | 20 | 13. 4,4'-DDE | 10 |
| 2. Hexachlorobenzene | 5 | 14. Dieldrin | 10 |
| 3. α -BHC | 5 | 15. Endrin | 10 |
| 4. γ -BHC | 5 | 16. 4,4'-DDD | 10 |
| 5. β -BHC | 5 | 17. Endosulfan II | 10 |
| 6. δ -BHC | 5 | 18. 4,4'-DDT | 10 |
| 7. Heptachlor | 5 | 19. Endrin aldehyde | 10 |
| 8. Aldrin | 5 | 20. Endosulfan sulfate | 10 |
| 9. Heptachlor epoxide | 5 | 21. Methoxychlor | 50 |
| 10. <i>trans</i> -Chlordane | 5 | 22. Endrin ketone | 10 |
| 11. <i>cis</i> -Chlordane | 5 | 23. Decachlorobiphenyl | 20 |
| 12. Endosulfan I | 5 | | |



GC_EV1323

Columns

Rtx-CLPesticides2 30 m, 0.32 mm ID, 0.25 µm (cat.# 11324) and Rtx-CLPesticides 30 m, 0.32 mm ID, 0.32 µm (cat.# 11141) using Rxi guard column 5 m, 0.32 mm ID (cat.# 10039) with universal "Y" Press-Tight connector (cat.# 20406-261) Organochlorine pesticide mix AB #2 (cat.# 32292) Hexachlorobenzene (cat.# 32231) 2,4,5,6-Tetrachloro-*m*-xylene (cat.# 32027) Decachlorobiphenyl (BZ #209) (cat.# 32029) *n*-Hexane

Diluent:

Injection

Inj. Vol.:

Liner:

Inj. Temp.:

Purge Flow:

2 µL splitless (hold 0.3 min)
Premium 4 mm single taper w/wool (cat.# 23303)
250 °C
50 mL/min

Oven

Oven Temp.:

Carrier Gas

Linear Velocity:

Detector

Make-up Gas Flow Rate:

Make-up Gas Type:

Data Rate:

Instrument

120 °C to 200 °C at 45 °C/min to 230 °C at 15 °C/min to 330 °C at 30 °C/min (hold 2 min)
He, constant flow
71 cm/sec
Micro-ECD @ 340 °C
50 mL/min
N₂
50 Hz
Agilent/HP6890 GC